



#9989

One-Bedroom Ground Floor Apartment in Lempa Paphos 200M From The Sea (9989)

📍 Lempa, Paphos

€235,000 +VAT





Overview

Specifications

Bedrooms



Bathrooms



Covered

51 m²

| | |
|----------------------|-------------------------|
| Type | Apartment |
| Toilets | 1 |
| Covered veranda | 11 m² |
| Status | Off plan |
| Year of construction | 2026 |

| | |
|---------------------------|--------------------|
| Furnished | Unfurnished |
| Structure | Concrete |
| Facade | Concrete |
| Communal charge frequency | Monthly |
| Energy efficiency rating | A |

Description

One-Bedroom Ground Floor Apartment in Lempa Paphos 200M From The Sea (9989)

Price: €235,000 + VAT

Embrace the perfect blend of style, comfort, and convenience just 200 meters from the beach. This modern off-plan apartment offers premium amenities and a prime location, ideal for both living and investment.

? Location Highlights:

5 km to the city center | 200 m to the beach | 20 km to the airport | 800 m to a school

Property Overview:

Type: 1-Bedroom Apartment | Floor: Ground Floor

Covered Area: 51 m² | Veranda: 11 m²

Parking: 1 space

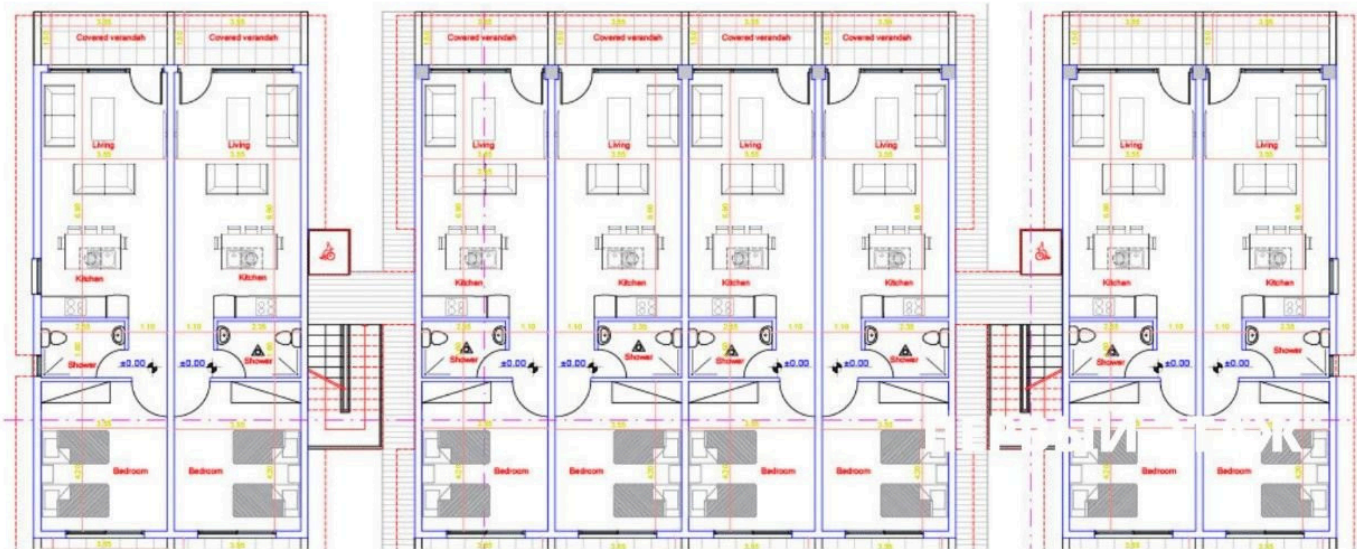
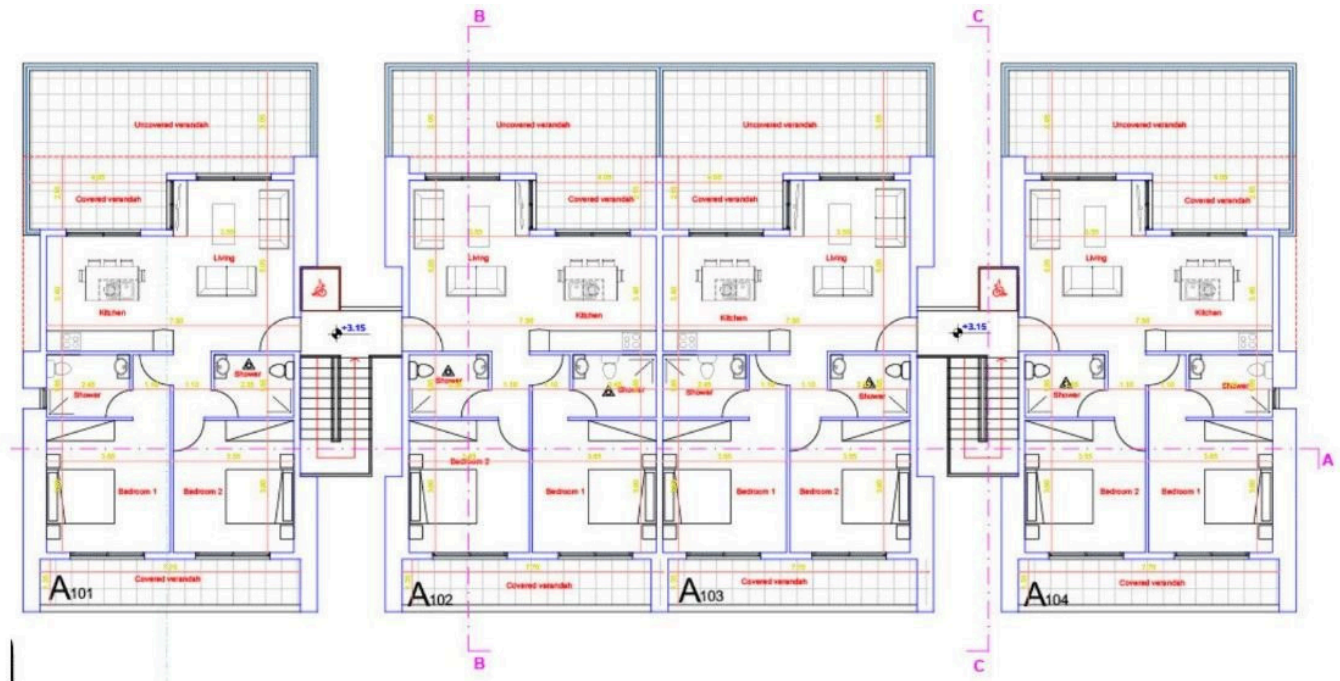
Status: Off-plan (Completion: August 2026) | Energy Efficiency: A-rated

Why Choose This Property?

Modern Design: Contemporary architecture with upgraded thermal aluminum windows.

Elegant Finishes: Imported ceramic tiles, branded sanitary ware, and custom-designed kitchens.

Floor plans



Additional information

Facilities

Aircondition, Provision

Heating, Provision

Pool, Communal

Storage

Childrens playground

Landscaped garden

Solar photovoltaic panels
(provision)

Gated complex

Parking, Covered

Solar water heater

Features

Barbeque

Connected to electric mains

Granite countertops

Pressurized water system

Veranda

Bright

Double glazing

Investment opportunity

Rental potential

Combined kitchen and dining area

Easy access to main roads

Open plan

Thermal insulation

Distances

Amenities

 400 m

Airport

 20 km

Sea

 200 m

Schools

 800 m


Resort

 1 km

Contact us



Stavroula Michail

 (+357) 99810880

 stavroulamichail.lextrus@gmail.com