



#9970

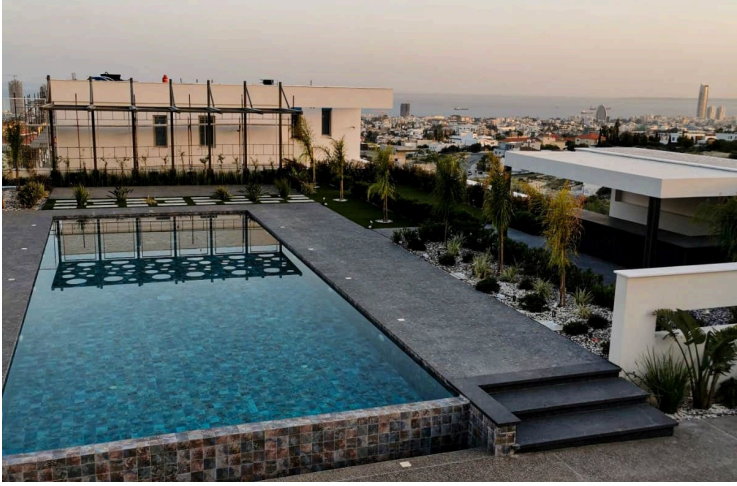
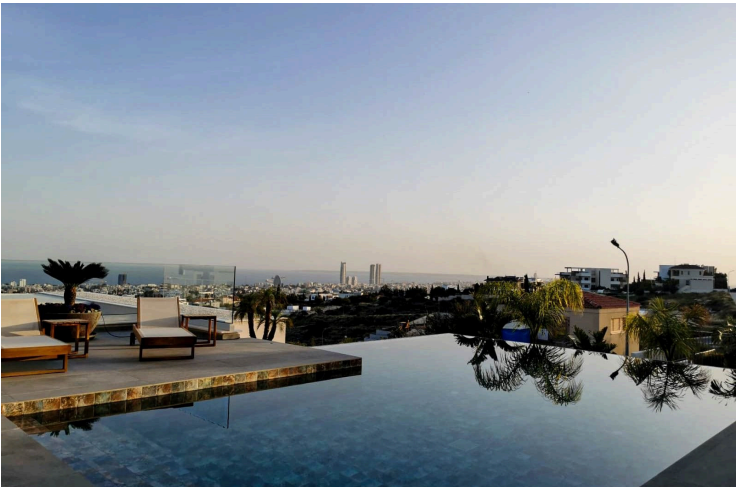
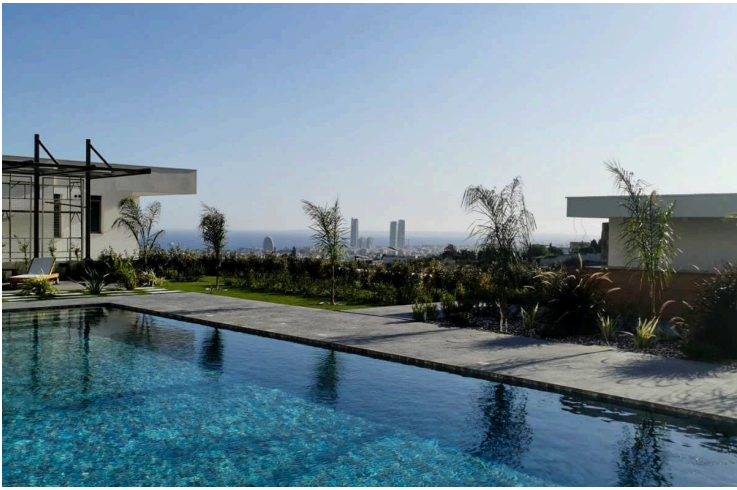
# Prestigious Seven-Bedroom Villa with Panoramic Sea Views in Paniotis, Limassol (9970)

📍 Germasogeia, Limassol

€10,000,000 +VAT










# Overview

## Specifications

Bedrooms		Covered	
 7		 1000 m <sup>2</sup>	
Type	Detached Villa	Covered parking	43 m <sup>2</sup>
Plot	1458 m <sup>2</sup>	Structure	Concrete
Covered veranda	123 m <sup>2</sup>	Facade	Concrete
Uncovered veranda	41 m <sup>2</sup>	Energy efficiency rating	 A
Basement	230 m <sup>2</sup>		

## Description

Prestigious Seven-Bedroom Villa with Panoramic Sea Views in Paniotis, Limassol (9970)

PRICE : EUR 10.000.000 +VAT

This exclusive villa, located in the highly sought-after Paniotis area of Limassol, offers an unparalleled combination of luxury, comfort, and cutting-edge design. With a total covered area of 1,000 m<sup>2</sup> and situated on a generous plot of 1,458 m<sup>2</sup> (optional additional plot: 697 m<sup>2</sup>), this residence is meticulously crafted to provide the ultimate living experience.

### Property Overview

Plot Size: 1,458 m<sup>2</sup> (+ optional extra plot: 697 m<sup>2</sup>)  
Total Covered Area: 1,000 m<sup>2</sup> | Basement Level: 230 m<sup>2</sup>  
Ground Floor: 229 m<sup>2</sup> | Covered Veranda: 65 m<sup>2</sup> | Uncovered Veranda: 41 m<sup>2</sup>  
Parking: 43 m<sup>2</sup> | First Floor: 229 m<sup>2</sup> | Covered Veranda: 58 m<sup>2</sup>

### Key Features

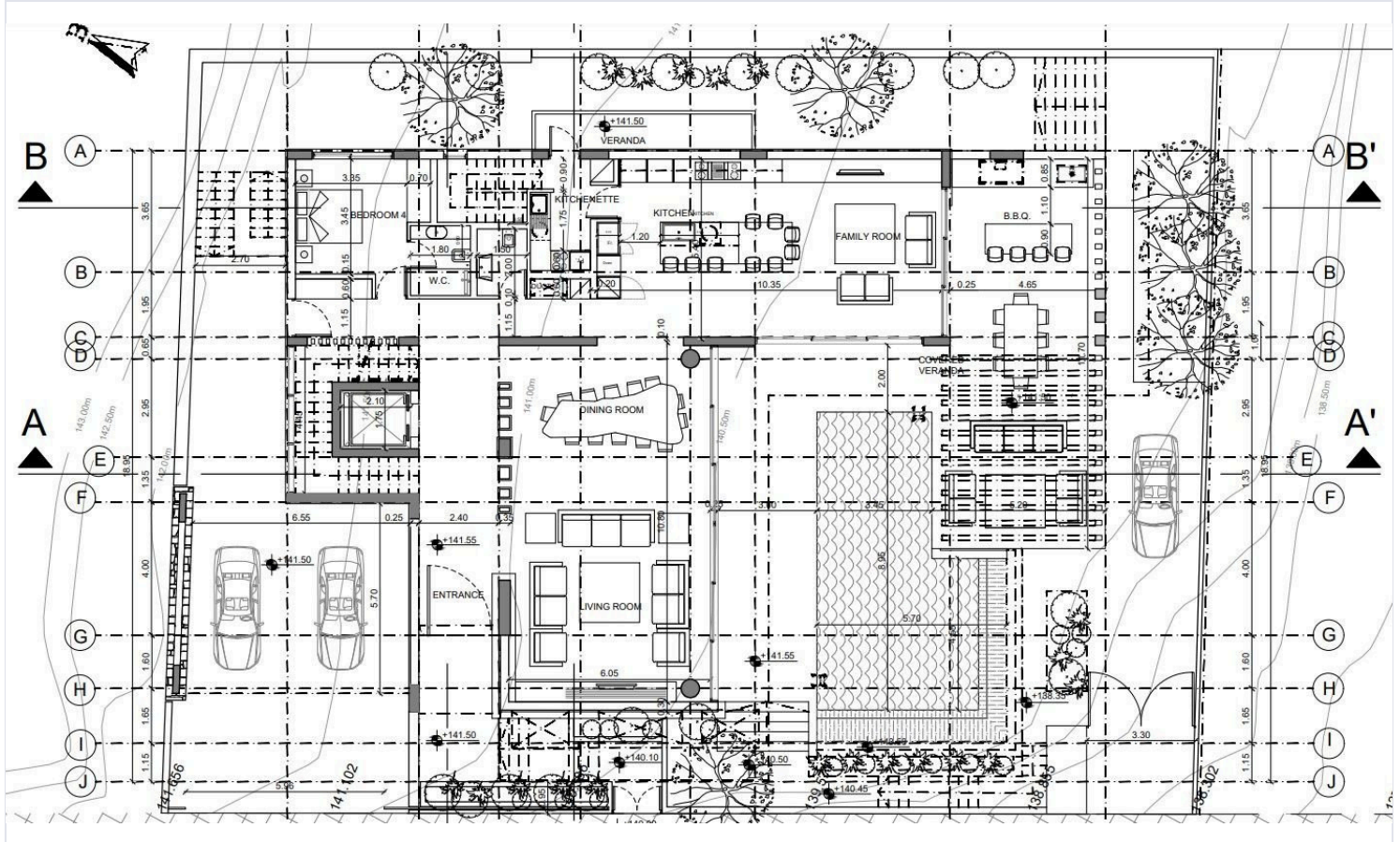
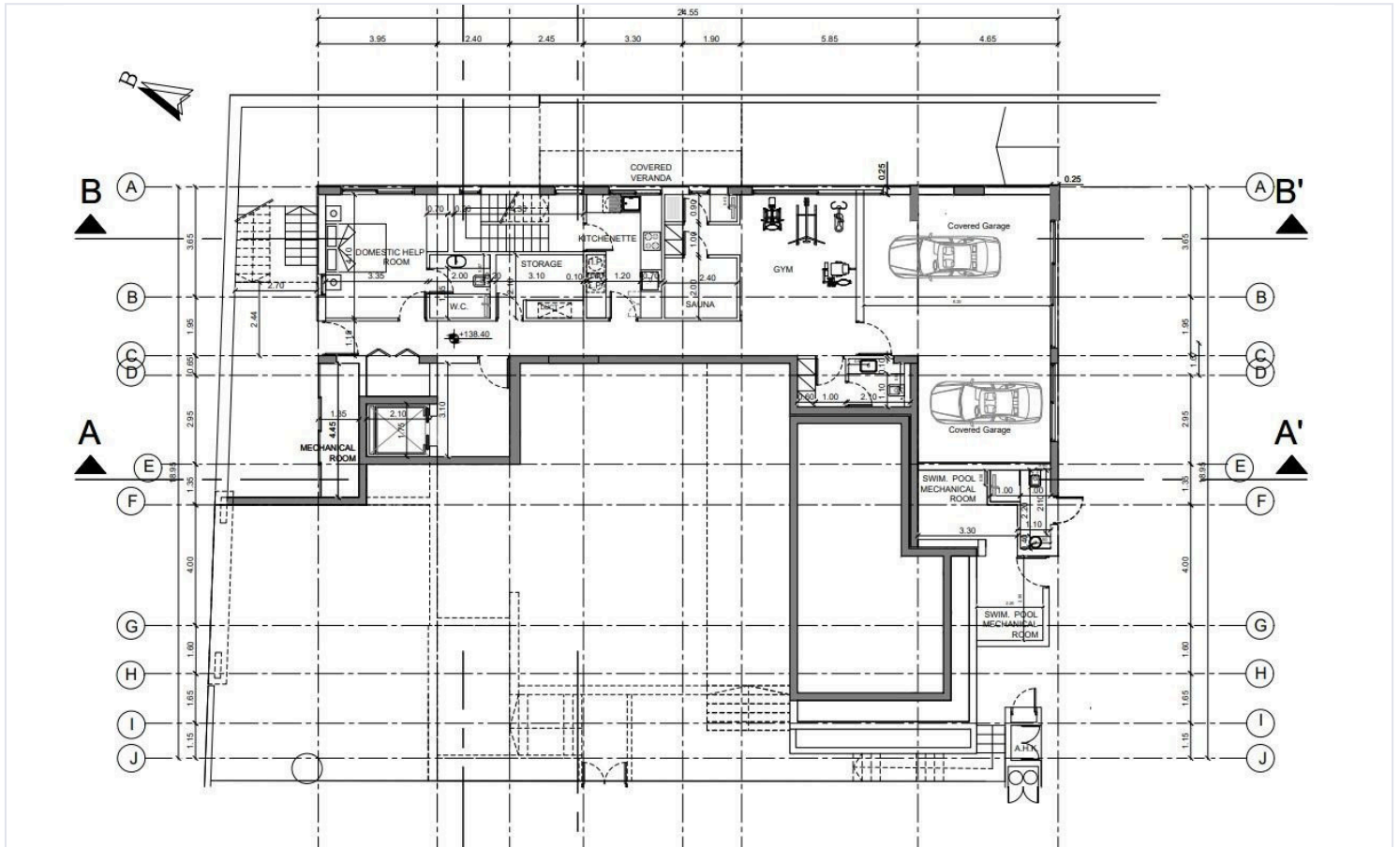
Location: Situated in the prestigious and tranquil Paniotis area with unobstructed sea views.

Layout:





# Floor plans



# Additional information

## Facilities

Aircondition, Central system

Heating, Underfloor

Parking, Garage, double

Solar photovoltaic panels

Elevator

Landscaped garden

Pool, Private, heated

Solar water heater

Gym

Outdoor shower

Sauna

Storage

## Features

Barbeque

CCTV (provision)

En suite shower

Entrance gate, automated

Granite countertops

Luxury specifications

Pipe-in-pipe plumbing system

Spacious rooms

Veranda, large

Bright

Central sound system

Energy efficient doors/windows

Garden

Indoor fireplace

Marble flooring

Sea view

Thermal insulation

Water softener

CCTV

Double glazing

Entrance gate

Garden, large

Investment opportunity

Modern design

Shower

Veranda

Wooden flooring

## Contact us



**Stavroula Michail**

☎ (+357) 99810880

✉ stavroulamichail.lextrus@gmail.com

