

#9772

Detached House with 4 Bedrooms in Souni Limassol (9772)

📍 Souni, Limassol





€470,000 +VAT





Overview

Specifications

Bedrooms		Bathrooms		Covered	
 4		 2		 199 m ²	
Type	Detached House				
Toilets	2				
Plot	500 m ²				
Status	Under construction				
Year of construction	2026				
Furnished	Unfurnished				
Structure	Concrete				
Facade	Concrete				
Energy efficiency rating	 A				

Description

Detached House with 4 Bedrooms in Souni Limassol (9772)

The house consists of 4 bedrooms and 2 bathrooms.

Ground floor - 100m2 - Upper floor – 71m2

Covered veranda – 28m2 - Total – 199m2

Uncovered roof top veranda – 28m2

Plot - 500m2

The total covered area of the house is 199m2 and it has also a large uncovered veranda on the upper floor.

This is a list of what is included in the price

Solar and electric water heating system. 1m paving around the house. Wooden pergola.

Ceramic tiles to all ground floors and bathrooms.

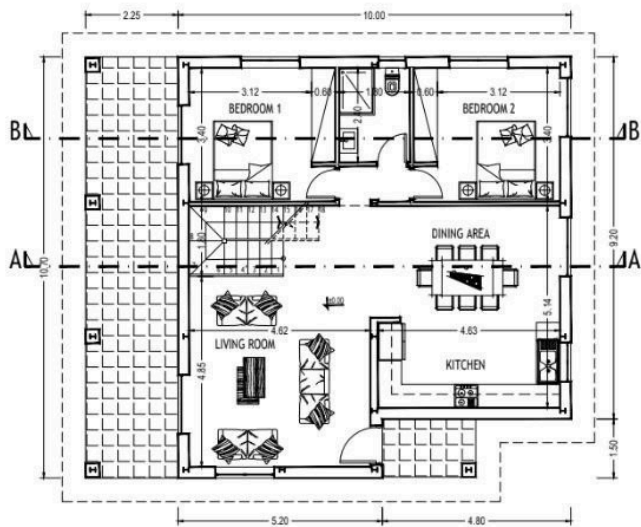
Top soil garden preparation.

Air conditioning in all rooms.(split units).

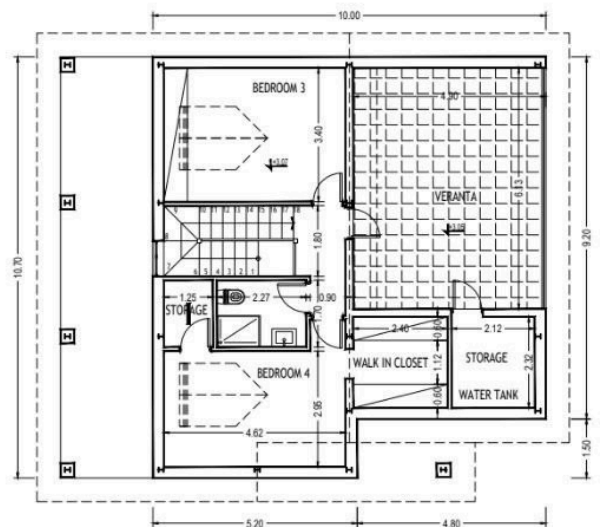
Preparation for heating system with radiators (electrical).



Floor plans



ΚΑΤΟΨΗ ΙΣΟΓΕΙΟΥ
ΚΛΙΜΑΚΑ 1:100



ΚΑΤΟΨΗ ΣΟΦΙΤΑΣ
ΚΛΙΜΑΚΑ 1:100



E=189

Δ.Χ.Ι

ΠΕΔΑΣΜΟΣ



Additional information

Facilities

Aircondition, Provision

Landscaped garden

Pool, Optional

Storage

Gated complex

Parking, Covered

Solar photovoltaic panels
(provision)

Heating, Provision

Pergola

Solar water heater

Features

Balcony

Double glazing

Granite countertops

Open plan

Shower

Veranda, large

Bright

En suite shower

Internal stairs

Pressurized water system

Thermal insulation

Combined kitchen and dining area

Garden

Investment opportunity

Roof garden

Veranda

Distances

Amenities

 700 m


Airport

 50 km

Contact us



Stefania Spyridou

 (+357) 99810880

 stephaniaSpyridou@gmail.com

