

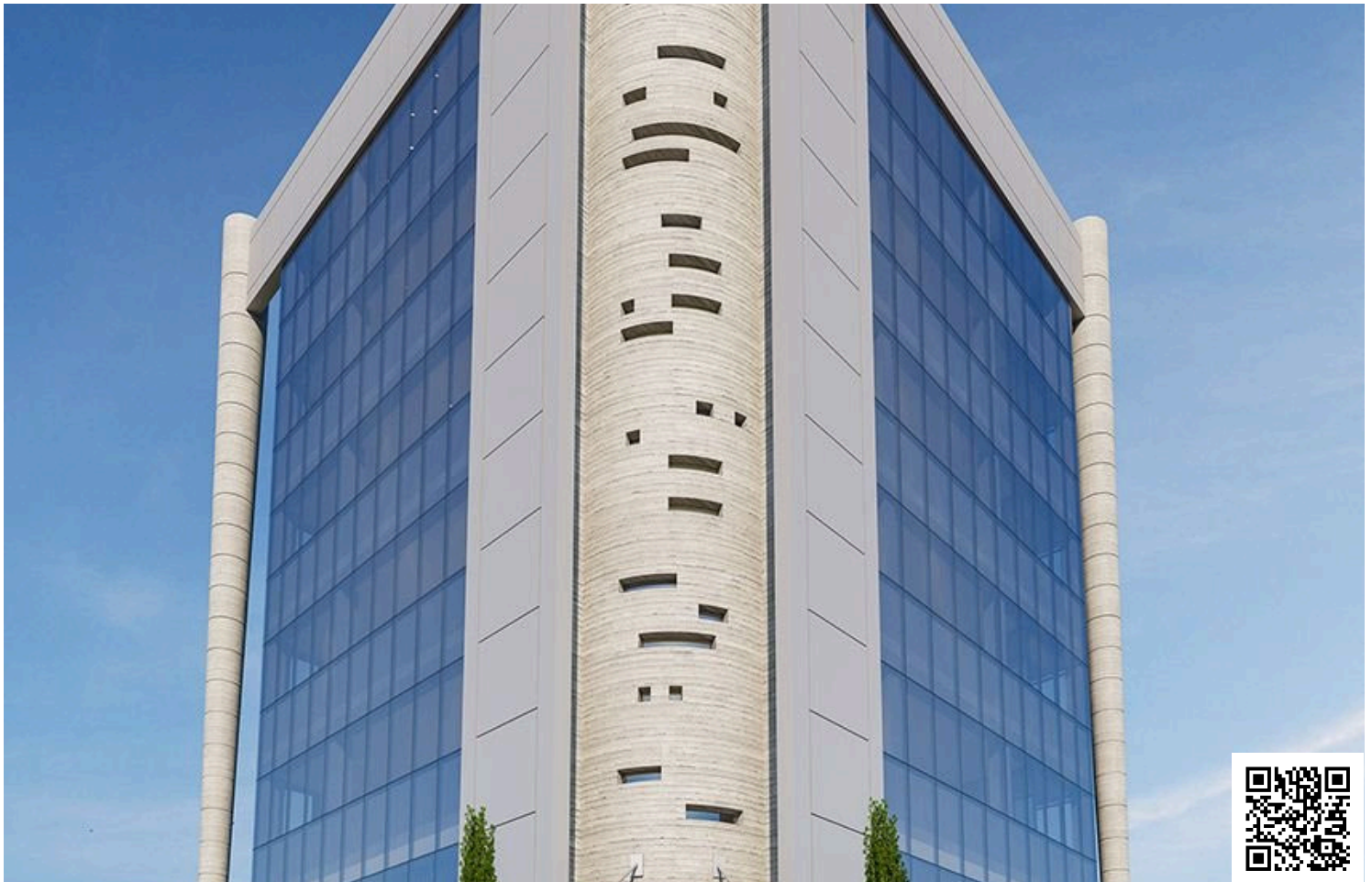


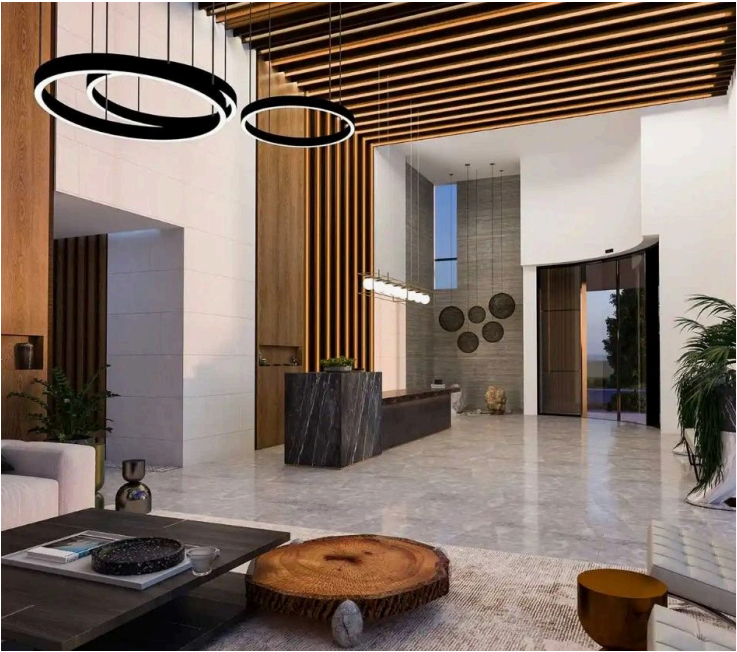
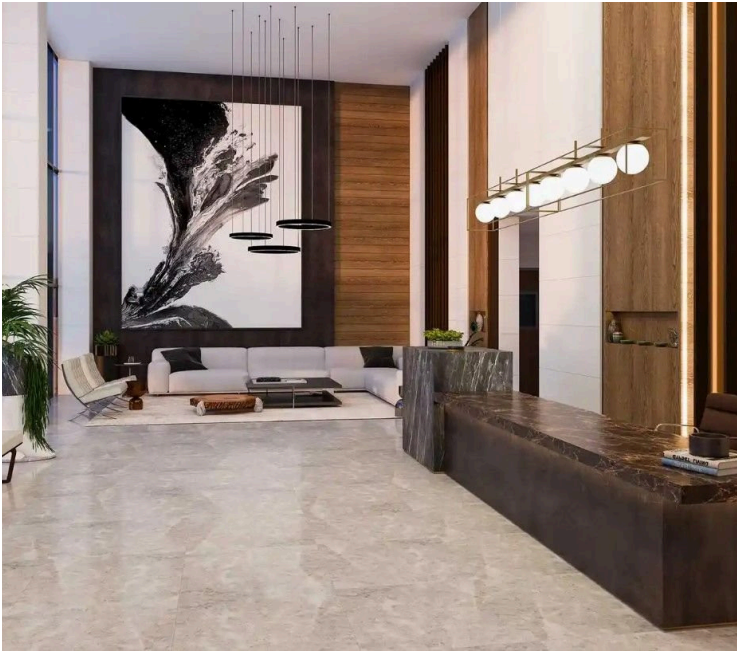
#9742

Prime City Centre Commercial Building (9742)

 Katholiki, Limassol

€6,300,000 +VAT






Overview

Specifications

Covered

 1710 m²

Type	Commercial Building
Plot	728 m²
Covered parking	500 m²
Status	Under construction

Furnished	Unfurnished
Structure	Concrete
Facade	Concrete
Energy efficiency rating	 A

Description

Prime City Centre Commercial Building (9742)

PRICE 6.300.000 +VAT

A Place that Fires the Imagination

With its standout architecture and placemaking, This Center is the statement-maker, creating a bigger, better working place to be.

We give pace to our place. Bold architecture, latest technology, secure environment and outdoor buzz on the elevated roof garden taking centre stage in our vibrant urban location of Limassol.

We're the standout destination and we've re-imagined the workplace. Our 1.500 sq mt of flexible, collaborative space is built to inspire and connect people complemented by two-level ample parking area for 30 vehicles.. A bold ambition realised over one brilliant office building.

With 5 levels in total each and every one is built to harness creativity and unlock potential in a place that makes you feel good.

Location :

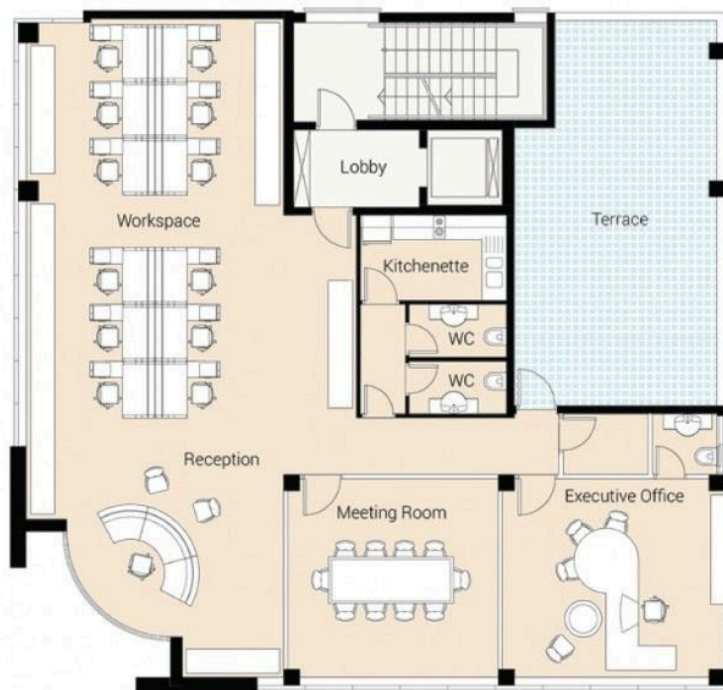
A Destination for the City Centre



Floor plans



Floors 2 to 5 Workplace



Additional information

Features

Double glazing	Earthquake-resistant structure	Easy access to highway
Easy access to main roads	Energy efficient doors/windows	Entrance gate
Entrance gate, automated	Entrance hall	Excellent condition
Granite countertops	Kitchen	Kitchenette
Luxury specifications	Marble flooring	Meeting room
Municipal water/sewage	Near amenities	Near bus route
Near public transport	Private bathrooms	Reception
Roof garden	Thermal insulation	

Contact us



Stavroula Michail

☎ (+357) 99810880

✉ stavroulamichail.lextrus@gmail.com

