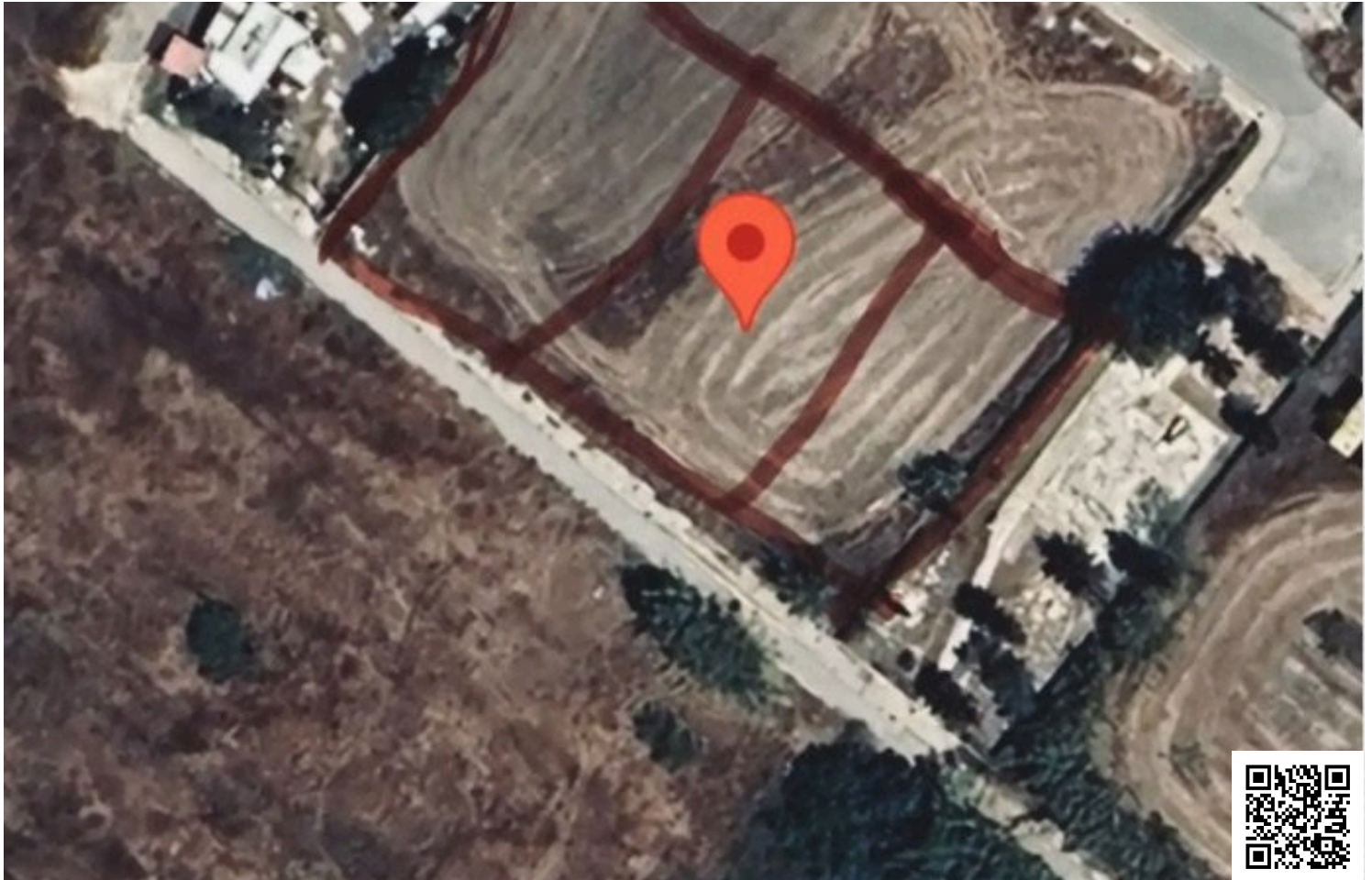


#9714

Investment Opportunity: 3 Adjacent Plots for Sale in Pyla, Larnaca – 1,711 m² (9714)

 Pyla, Larnaca

€550,000



Overview

Specifications

Area		1711 m ²	
Type	Building Plot	Title deed	Yes

Description

Investment Opportunity: 3 Adjacent Plots for Sale in Pyla, Larnaca – 1,711 m² (9714)

Description:

Prime Location:

Located in a newly developed building area in Pyla, Larnaca.

Close proximity to a University, making it ideal for student housing or other development projects.

Plot Details:

Combined size: 1,711 m² (3 adjacent plots).

Building Density: 90% - excellent for maximizing construction potential.

All plots come with clean title deeds, ensuring a smooth transaction process.

Features:

Situated in a growing area with high demand for residential and rental properties.

Flat terrain, ready for immediate development.

Perfect for building apartments, houses, or other profitable investments.

Investment Opportunity:

Priced at €550,000, offering significant value for such a prime location.

Potential for high returns due to the proximity to the university and demand for housing.



Additional information

Features

Easy access to highway

Easy access to main roads

Mountain view

Near amenities

Near bus route

Next to green area

Distances

Amenities

 100 m

Airport

 20 km

Sea

 3 km

Public transport

 100 m

Schools

 500 m


Resort

 300 m

Contact us



Giorgos Tsiampos

 (+357) 99982112

 infoextrusrealestate@gmail.com

