

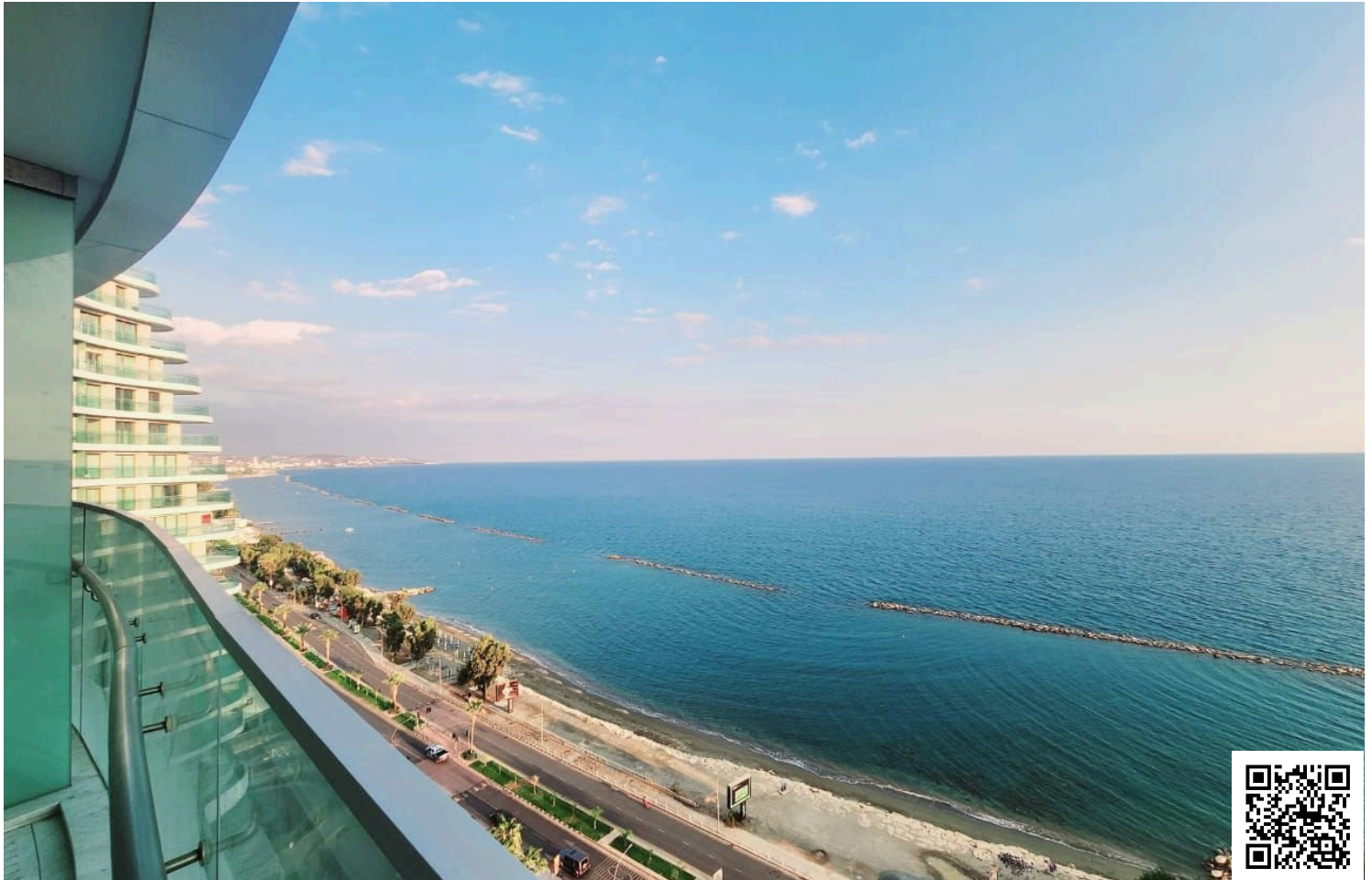


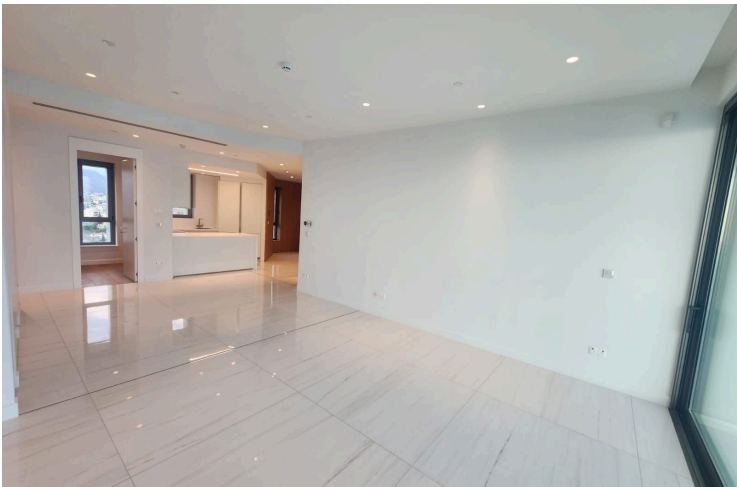
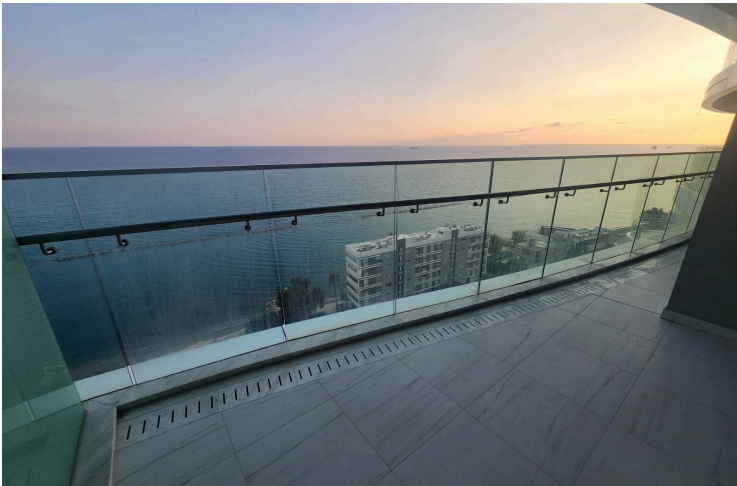
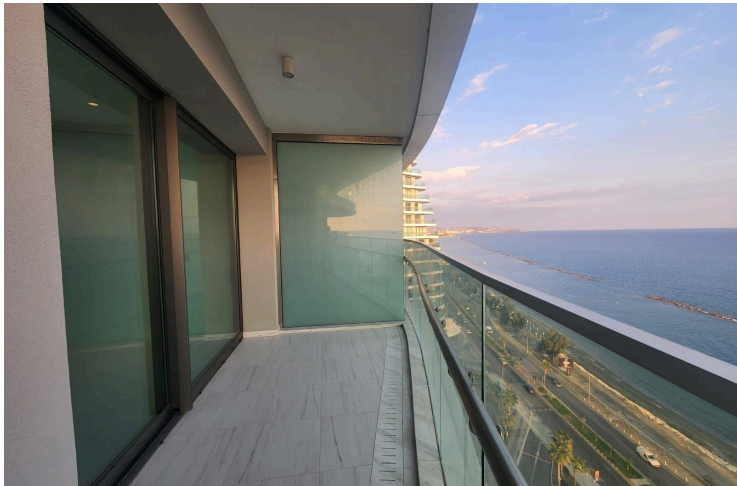
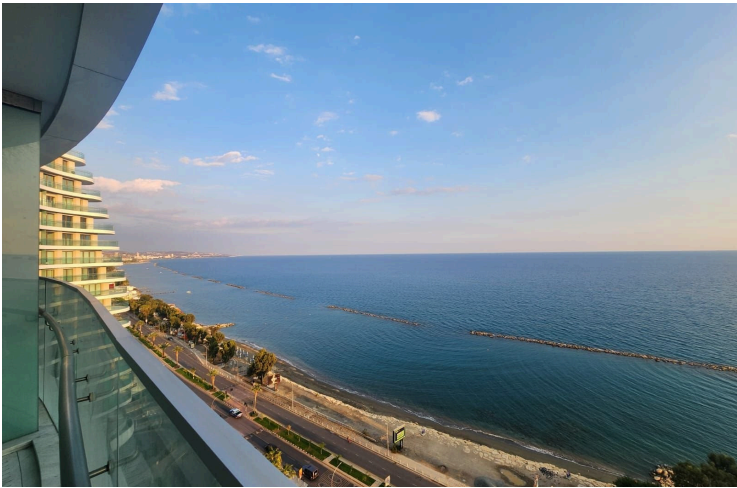
#9703

# Spacious 2+1-bedroom Apartment in Limassol Marina With Amazing Sea Views! (9703)

📍 Limassol Marina, Limassol

€5,500 /month











# Overview

## Specifications

Bedrooms		Bathrooms		Covered	
 2		 2		 110 m <sup>2</sup>	
Type		Apartment			
Toilets		2			
Status		Used			
Furnished		Unfurnished			
Structure		Concrete			
Facade		Concrete			
Communal charge frequency		Monthly			
Energy efficiency rating		 A			

## Description

This spacious 110 m<sup>2</sup> apartment for rent in Limassol Marina offers a perfect blend of comfort and luxury. With three bedrooms and two bathrooms, it provides ample space for families or professionals seeking a relaxing retreat. The apartment, located in a gated complex with an elevator, ensures privacy and convenience.

Limassol Marina is renowned for its vibrant lifestyle. Enjoy an array of waterfront restaurants, cafes, and boutiques just steps away from your door. The beautiful promenade invites leisurely strolls while the marina offers stunning views and the joy of living near the water. Residents also benefit from a modern gym, promoting a healthy and active lifestyle.

The apartment is designed for energy efficiency with an A rating, ensuring lower utility bills and a lighter environmental footprint. Although unfurnished, it provides a blank canvas for you to personalize it to your taste. The central AC system promises year-round comfort.

Discover a unique living experience in Limassol Marina. Contact Lextrus Real Estate to schedule a viewing and take the first step towards making this exceptional apartment your new home.



# Additional information

## Facilities

Aircondition, Central system

Gym

Solar water heater

Elevator

Heating, Central

Storage

Gated complex

Parking, Covered

## Features

Double glazing

Investment opportunity

Open plan

Thermal insulation

Easy access to main roads

Modern design

Sea front

Granite countertops

Office

Sea view

## Distances

Amenities

 150 m

Airport

 52 km

Sea

 10 m


Schools

 950 m

## Contact us



**Stefania Spyridou**

 (+357) 99810880

 stephaniaSpyridou@gmail.com

