



#9631

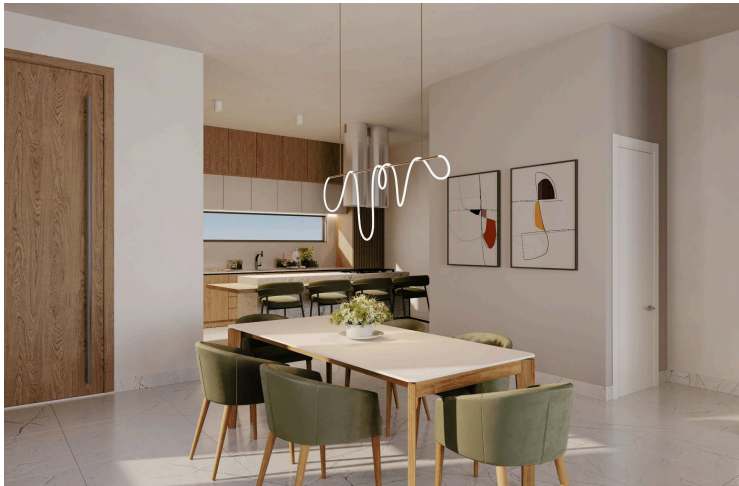
# Luxurious Sea View Villa in Prestigious Tala, Pafos (9631)

📍 Tala, Paphos

**€750,000** +VAT











# Overview

## Specifications

Bedrooms		Bathrooms		Covered	
 3		 3		 180 m <sup>2</sup>	
Type		Detached Villa			
Toilets		4			
Plot		860 m <sup>2</sup>			
Status		Off plan			
Year of construction		2027			
Furnished		Unfurnished			
Structure		Concrete			
Facade		Concrete			
Energy efficiency rating		 A			

## Description

Luxurious Sea View Villa in Prestigious Tala, Pafos (9631)

Discover this exquisite off-plan detached villa in Tala, one of Pafos's most sought-after areas. This 2-story property features three spacious bedrooms, three modern bathrooms, and an additional guest toilet. Thoughtfully designed with aluminum frames and energy efficiency rated A, this villa promises both style and sustainability.

### Key Features:

- Tailor-made kitchen design
- Wide range of imported ceramic tiles and marble finishes
- High-quality branded sanitary ware
- Provisions for central heating and A/C
- Optional overflow swimming pool for added luxury
- Expansive plots with unobstructed sea views

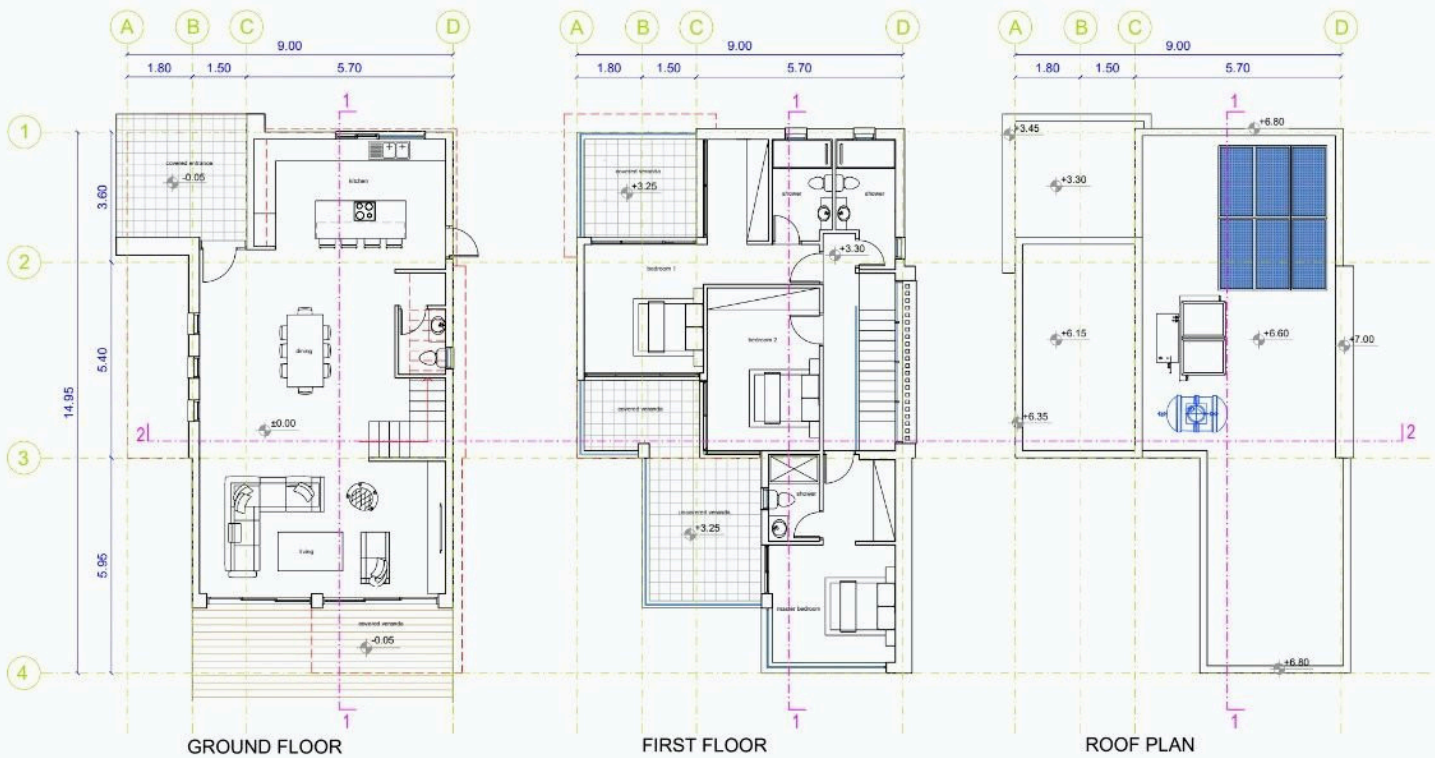
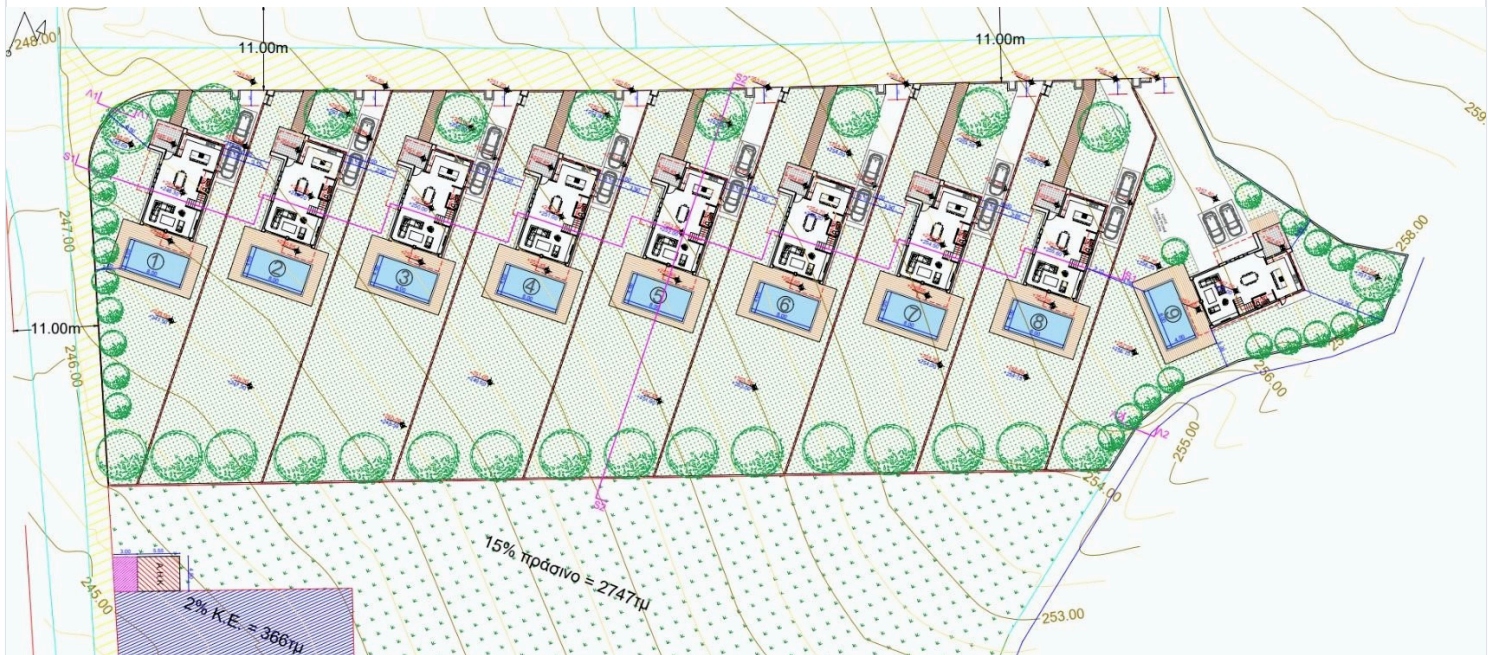
This exclusive development consists of only nine villas, ensuring privacy and serenity while enjoying panoramic views of Pafos and Peyia Bay. The contemporary design blends modern architecture with locally sourced materials to harmonize with the surrounding natural beauty. Just minutes from Pafos center, Tala golf course, the beach, and the charming village center, this villa offers an ideal location for investment or permanent residence.

Price: €750,000 + VAT





# Floor plans



# Additional information

## Facilities

Aircondition, Provision

Landscaped garden

Solar photovoltaic panels  
(provision)

Gated complex

Parking, Covered

Solar water heater

Heating, Provision

Pool, Optional

Storage

## Features

Balcony

Connected to electric mains

Easy access to main roads

Granite countertops

Open plan

Sea view

Veranda, large

Bright

Double glazing

Entrance gate

Guest WC

Pressurized water system

Thermal insulation

Combined kitchen and dining area

Easy access to highway

Entrance gate, automated

Investment opportunity

Roof garden

Veranda

## Distances

Amenities



1.5 km

Airport



25 km

Sea



5 km

Public transport



2 km

Schools



2 km

Resort



5 km

## Contact us



**Stefania Spyridou**

☎ (+357) 99810880

✉ [stephaniaspyridou@gmail.com](mailto:stephaniaspyridou@gmail.com)

