



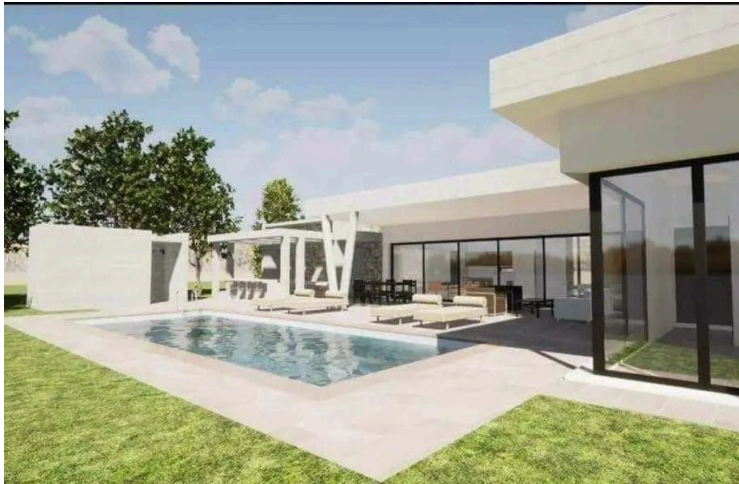
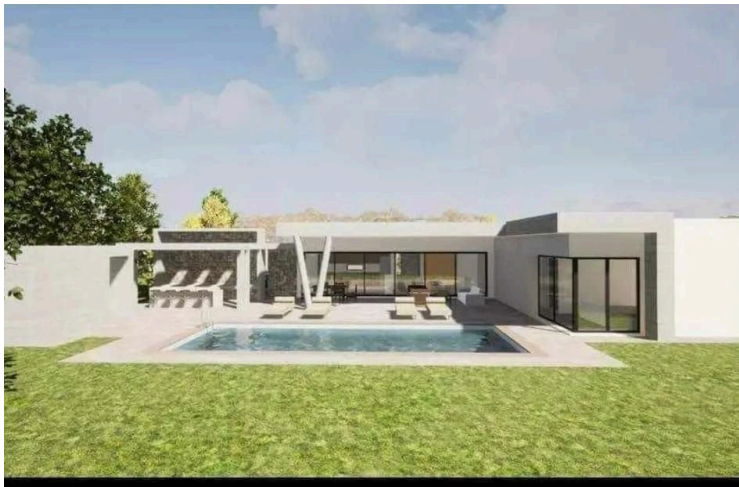
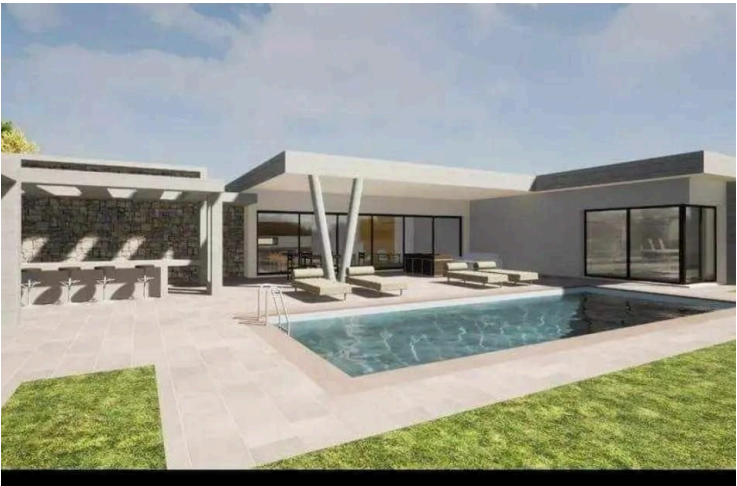
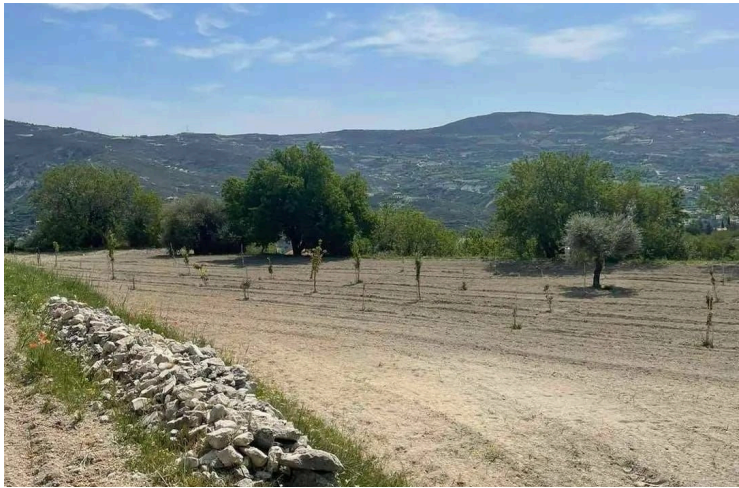
#9513

Scenic Residential Plot for Sale in Silikou Village (9513)

📍 Silikou, Limassol

€175,000





Overview

Specifications

Area	
2174 m ²	
Type	Field
Title deed	
Yes	

Description

Scenic Residential Plot for Sale in Silikou Village (9513)

Property Overview

Nestled in the tranquil village of Silikou, this expansive residential plot offers a rare opportunity to create a peaceful countryside retreat. With a pending border application, the plot's size exceeds 2,174 sq.m., making it ideal for a spacious family home or a multi-residence project. With density & coverage 20%.

Highlights

Flexible Development Potential: Architectural plans have already been drafted for a 3-bedroom, 3-bathroom house. Additionally, the plot can support up to three homes under specific conditions, providing versatility for developers or families.

Charming Village Setting: Surrounded by lush landscapes, Silikou Village offers a serene environment with easy access to Limassol's amenities.

Additional Information :

Pending application at the Land Registry for boundary verification, which confirms the larger size of the plot. Ideal for those seeking to build a single spacious home or a small residential complex.



Additional information

Features

Easy access to main roads

Quiet area

Village view

Distances

Airport



55 km

Contact us



Stefania Spyridou

☎ (+357) 99810880

✉ stephaniaSpyridou@gmail.com

