



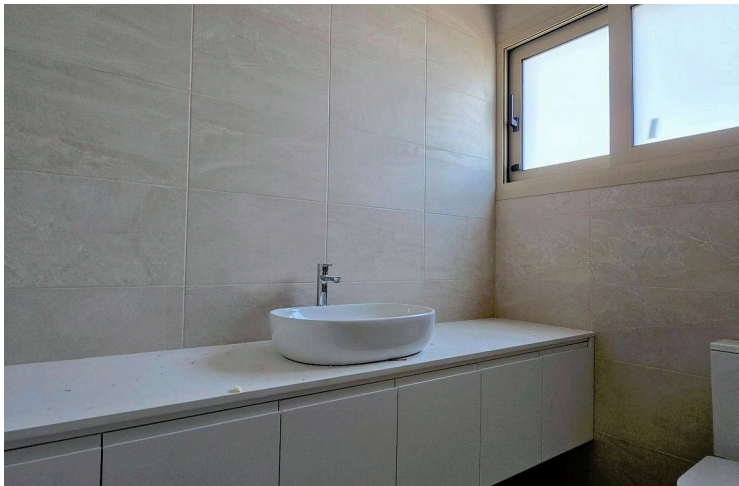
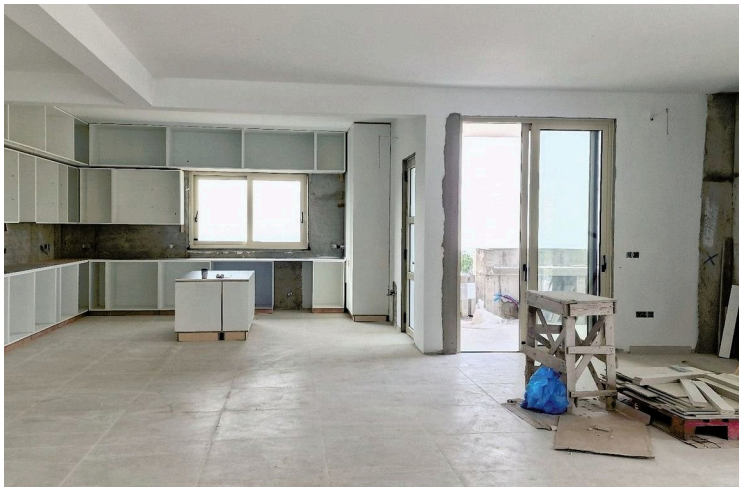
#9376

FOR SALE BEAUTIFUL 3 BEDROOM FULL GROUND FLOOR VILLA IN TALA! (9376)

📍 Tala, Paphos





€875,000 +VAT





Overview

Specifications

Bedrooms		Bathrooms		Covered	
 3		 2		 250 m ²	
Type	Detached Villa				
Toilets	2				
Plot	1671 m ²				
Status	Under construction				
Year of construction	2024				
Furnished	Unfurnished				
Structure	Concrete				
Facade	Concrete				
Energy efficiency rating	 A				

Description

FOR SALE BEAUTIFUL 3 BEDROOM FULL GROUND FLOOR VILLA IN TALA! (9376)

PRICE 875.000 +VAT

Nestle in the attractive and picturesque area of Tala, and offering panoramic coastal views of the Pafos town, this stunning Villa is now available for sale. A modern ground floor bungalow villa that consists of 3 bedrooms plus a utility room, with ensuite bathroom and guest full bathroom, offering open plan areas in between a modern bright kitchen and the large living and dining areas.

Within a massive plot of 1617m2, the villa provides large garden areas, optional private swimming pool, outdoor barbeque area and double covered parking space.

Tala area is located less than 10 minutes drive from Pafos town centre and it is well known for its charming character, great climate conditions and picturesque square with traditional restaurants and coffee shops.

AN INVESTMENT NOT TO BE MISSED (3 months to delivery)!



Additional information






Facilities

Aircondition, Provision	Heating, Underfloor	Landscaped garden
Parking, Garage, double	Pool, Optional	Solar photovoltaic panels
Solar photovoltaic panels (provision)	Solar water heater	Storage

Features

Balcony	Balcony, back	Balcony, front
Bath	Bathroom underfloor heating	Bright
Ceramic tiles	Combined kitchen and dining area	Country view
Easy access to highway	Easy access to main roads	En suite shower
Fitted wardrobes	Granite countertops	Ground floor bedroom
Guest WC	Guestroom	High ceilings
Indoor fireplace	Luxury specifications	Modern design
Mountain view	Open plan	Openings in opposite sides
Panoramic view	Pressurized water system	Shower
Sound insulation	Spacious rooms	Thermal insulation
Utility room	Veranda	

Distances

Amenities  1 km	Airport  25 km	Sea  15 km
Public transport  1 km	Schools  1 km	Resort  15 km



Contact us



Stefania Spyridou

☎ (+357) 99810880

✉ stephaniaspyridou@gmail.com

