



#9365

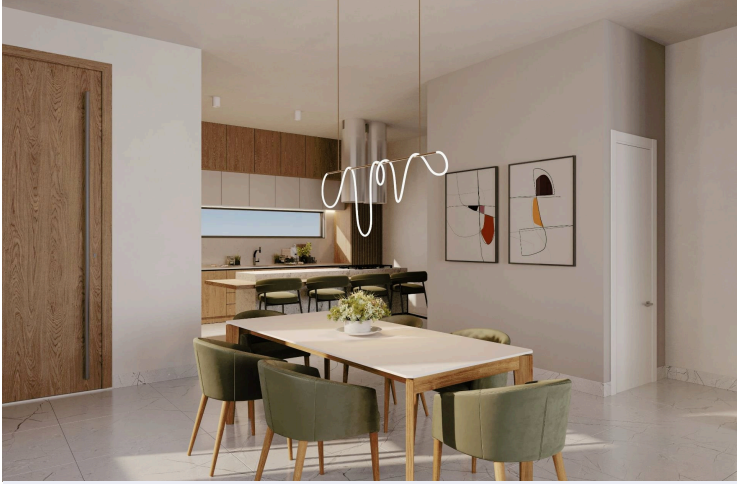
# ? Luxurious 3-Bedroom Detached Villa with Sea Views in Tala, Paphos - Off Plan ? (9365)

📍 Tala, Paphos

€855,000 +VAT











# Overview

## Specifications

Bedrooms		Bathrooms		Covered	
 3		 3		 210 m <sup>2</sup>	
Type		Detached Villa			
Toilets		4			
Plot		410 m <sup>2</sup>			
Status		Off plan			
Year of construction		2026			
Furnished		Unfurnished			
Structure		Concrete			
Facade		Concrete			
Energy efficiency rating		 A			

## Description

? Luxurious 3-Bedroom Detached Villa with Sea Views in Tala, Paphos - Off Plan ? (9365)

Price: €855,000 +VAT | | COMPLETION 18 MONTHS FROM CONSTRCT SIGNING|

Immerse yourself in the epitome of refined living with this off-plan, architectural masterpiece situated in the charming village of Tala, Paphos. Crafted with meticulous attention to detail, this elegant villa presents a harmonious fusion of contemporary design, high-end finishes, and panoramic sea views.

Contemporary Architectural Design & Upgraded thermal aluminium series. Tailor made kitchen design. Branded sanitary ware. Provisions for central heating & A/C. Detached Properties with unobstructed sea view.

Villa Overview:

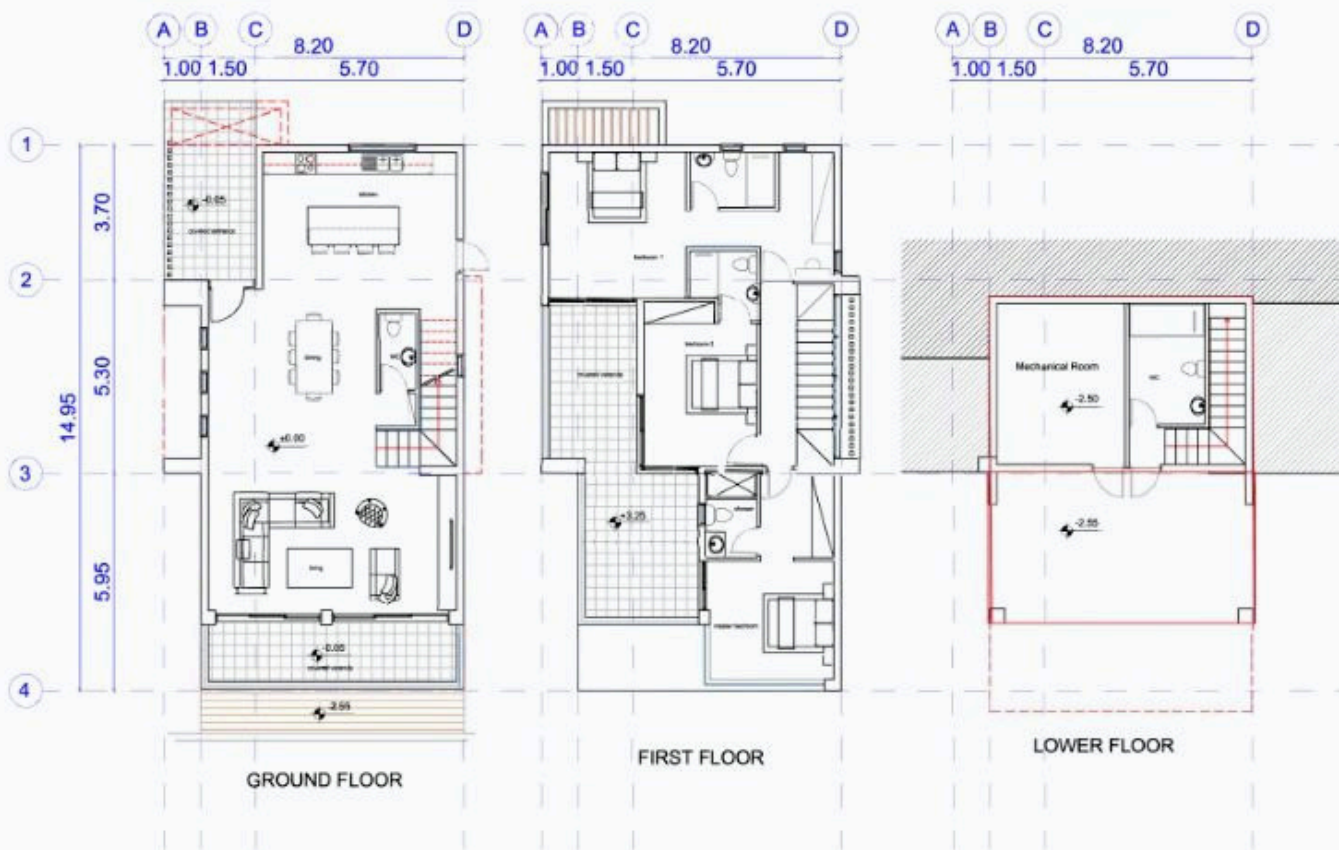
Type: Detached Villa  
Status: Off Plan  
Floors: 2 | Parking Spaces: 2 (Double Garage)  
Living Rooms: 1 | Kitchens: 1  
Bedrooms: 3 | Bathrooms: 3 | Toilets: 4  
Energy Efficiency Rating: A | Covered Area: 210 m2 | Covered Veranda: 58 m2 | Plot Size: 410 m2

Elevate your lifestyle with this extraordinary residence, seamlessly blending sophistication, comfort, and functionality. Contact us today to explore this exclusive opportunity for refined living in the heart of Tala, Paphos! ??





# Floor plans



# Additional information

## Facilities

Aircondition, Central system

Landscaped garden

Solar photovoltaic panels  
(provision)

Gated complex

Parking, Garage, double

Solar water heater

Heating, Underfloor

Pool, Private, overflow

Storage

## Features

24-hour security

Balcony

Bathroom underfloor heating

CCTV (provision)

Double glazing

En suite shower

Fitted wardrobes

Granite countertops

Internal stairs

Near amenities

Quiet area

Spacious rooms

Thermal insulation

Walk-in closet

Alarm system

Barbeque

Bright

Central TV system

Easy access to highway

Entrance gate

Garden

Guest WC

Irrigation system

Open plan

Roof garden

Study

Veranda

Alarm system (provision)

Bath

CCTV

Ceramic tiles

Easy access to main roads

Entrance gate, automated

Garden, large

High ceilings

Luxury specifications

Pressurized water system

Sea view

Suitable for work

Veranda, large

## Distances

Amenities



5 km

Airport



15 km

Sea



5 km

Public transport



1 km

Schools



7 km

Resort



10 km



# Contact us



**Stefania Spyridou**

 (+357) 99810880

 [stephaniaspyridou@gmail.com](mailto:stephaniaspyridou@gmail.com)

