



#9304

# Lovely 3 Bedroom Semi-House Next To Green Area in Aradippou Larnaca (9304)

📍 Aradippou, Larnaca

€315,000 +VAT





# Overview

## Specifications

Bedrooms



3

Bathrooms



2

Covered

132 m<sup>2</sup>

Type	<b>Semi-Detached House</b>
Toilets	<b>3</b>
Plot	<b>195 m<sup>2</sup></b>
Status	<b>Off plan</b>
Year of construction	<b>2026</b>

Furnished	<b>Unfurnished</b>
Structure	<b>Concrete</b>
Facade	<b>Concrete</b>
Energy efficiency rating	<b>A</b>

## Description

Lovely 3 Bedroom Semi-House Next To Green Area in Aradippou Larnaca (9304)

PRICE 315.000 +VAT

This charming off-plan villa offers a serene lifestyle within a spacious 2-story layout, beautifully nestled in Aradippou, Larnaca. Covering 132 m<sup>2</sup>, this modern residence combines stylish design with practicality, featuring a covered veranda of 21 m<sup>2</sup> and covered parking of 18.5 m<sup>2</sup> on a 195 m<sup>2</sup> plot. Ideal for families and investors alike, the home enjoys close proximity to essential amenities, schools, and the coast.

Key Features:

Bedrooms: 3, including a master suite with en-suite shower

Bathrooms: 2, plus an additional guest WC

Living Space: Open-plan design merging the living room, dining, and kitchen areas, enhanced with granite countertops and fitted wardrobes

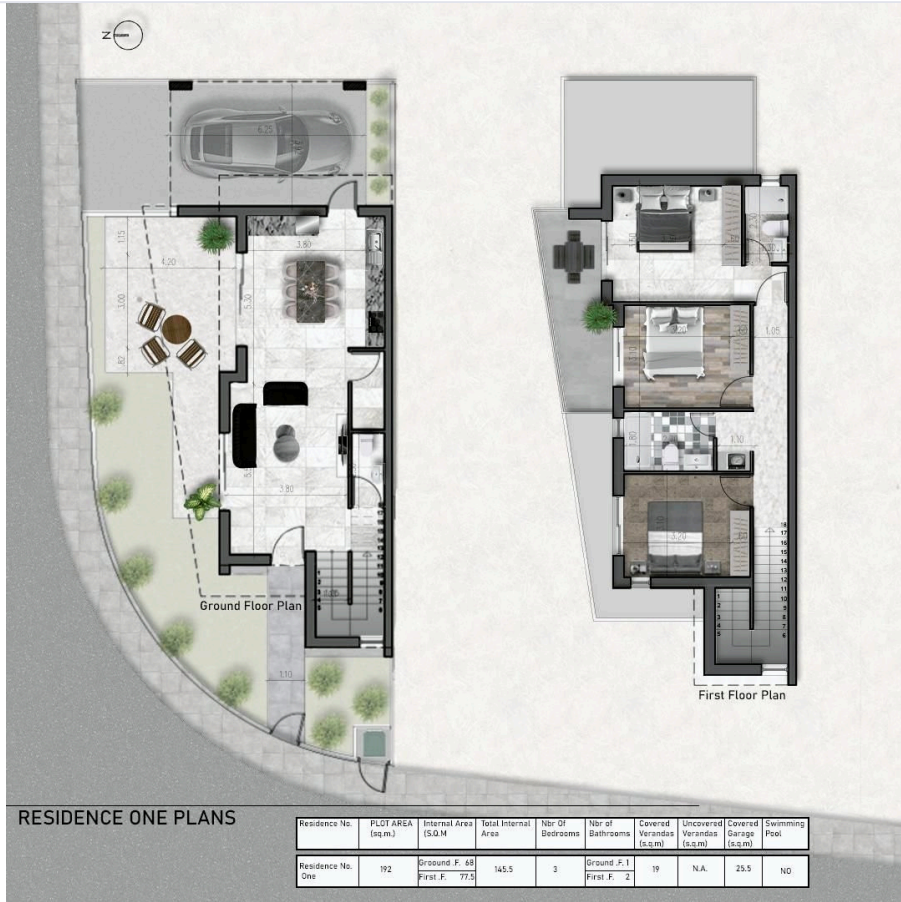
Garden: Landscaped with ample outdoor space and a private balcony for relaxation

Amenities include provision for air conditioning and heating, double glazing, thermal insulation, a solar water heater, and garbage disposal. An automated entrance gate, internal stairs, and a storage area add convenience to this well-planned villa, ensuring comfort and energy efficiency.

Conveniently located, this home is:



# Floor plans



# Additional information

## Facilities

Aircondition, Provision

Heating, Provision

Landscaped garden

Parking, Garage

Solar water heater

Storage

## Features

Balcony

Bright

Combined kitchen and dining area

Connected to electric mains

Double glazing

Easy access to main roads

En suite shower

Entrance gate

Fitted wardrobes

Garbage disposal

Garden

Granite countertops

Guest WC

Internal stairs

Investment opportunity

Modern design

Near amenities

Open plan

Quiet area

Shower

Thermal insulation

## Distances

Amenities

 500 m

Airport

 12.9 km

Sea

 6.5 km

Public transport

 900 m

Schools

 1.6 km


Resort

 14 km

## Contact us



**Stefania Spyridou**

 (+357) 99810880

 stephaniaSpyridou@gmail.com

