



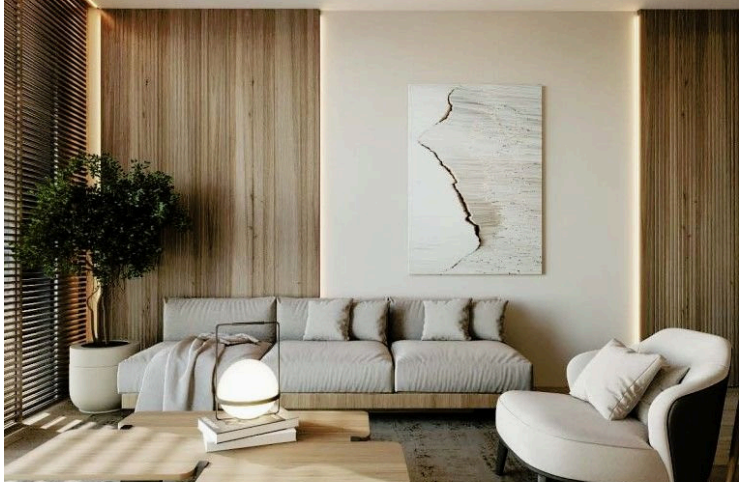
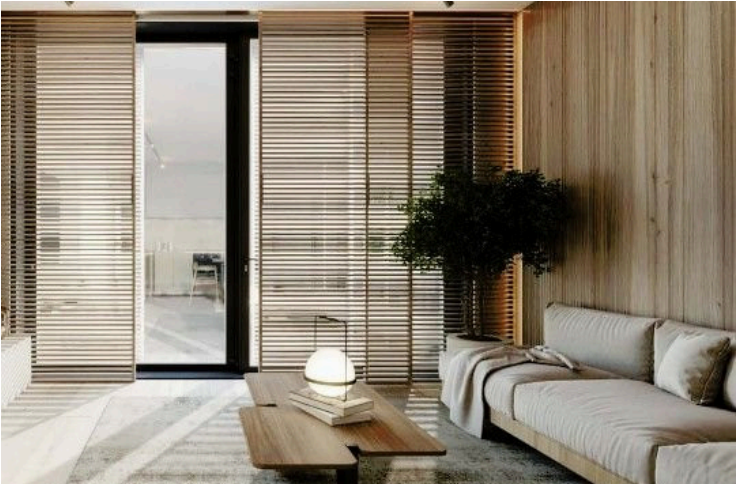
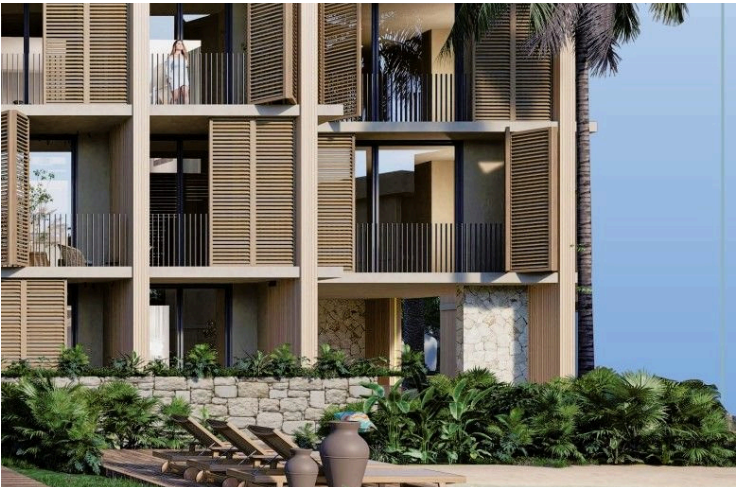
#9303

Modern 1-Bedroom Apartment with Pool & Garden Views – Pyla, Larnaca (9303)

 Pyla, Larnaca

€216,686 +VAT





Overview

Specifications

Bedrooms



Bathrooms



Covered

54.9 m²

Type	Apartment
Toilets	1
Covered veranda	10.3 m²
Roof garden	27.4 m²
Status	Off plan
Year of construction	2026

Furnished	Optional furnished
Structure	Concrete
Facade	Concrete
Communal charge frequency	Monthly
Energy efficiency rating	A

Description

Modern 1-Bedroom Apartment with Pool & Garden Views – Pyla, Larnaca (9303)

Experience the ultimate in modern living with this off-plan 1-bedroom apartment, located on the 2nd floor of the building in the charming area of Pyla, Larnaca. This thoughtfully designed residence offers stunning garden views, with a total covered area of 54.9 m².

Key Features:

1 Bedroom, 1 Bathroom

Optional furnished option available

Open-plan living and dining area

Covered veranda (10.5 m²)

Energy-efficient rating: A

Modern design with thermal insulation and double glazing

Provisions for air conditioning, heating, and solar photovoltaic panels

High-quality finishes, including granite countertops

En suite shower in the bedroom

Exclusive Community Amenities:

Communal swimming pool



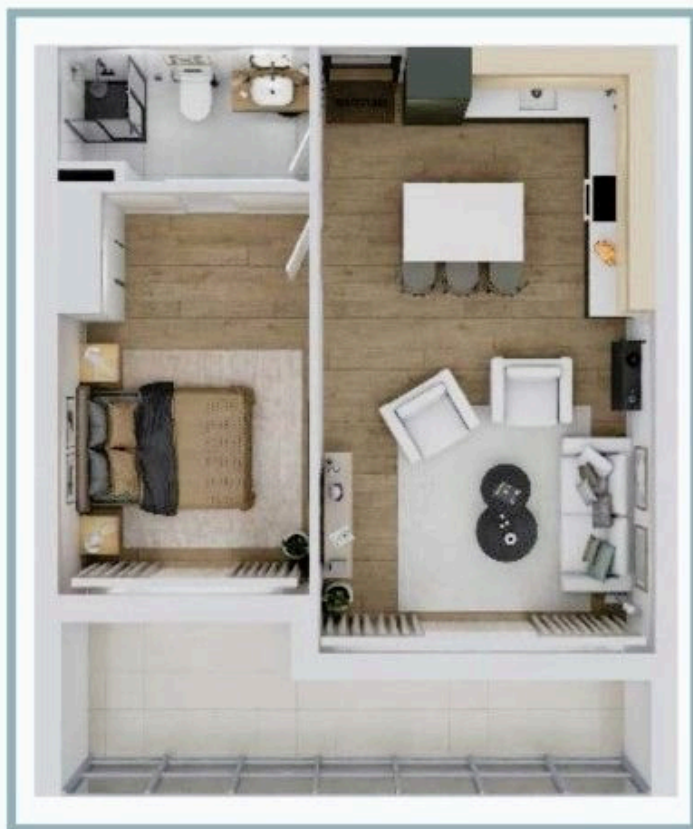
1 BED ROOM

 1  1  66 sqm
avg

TYPE 1



TYPE 2



Additional information

Facilities

Aircondition, Provision

Elevator

Heating, Provision

Parking, Covered

Solar water heater

Childrens playground

Gated complex

Landscaped garden

Pool, Communal

Storage

Clubhouse

Gym

Outdoor shower

Solar photovoltaic panels (provision)

Features

Balcony

Double glazing

En suite shower

Granite countertops

Near amenities

Rental potential

Thermal insulation

Combined kitchen and dining area

Easy access to highway

Entrance gate

Investment opportunity

Near bus route

Roof garden

Veranda

Connected to electric mains

Easy access to main roads

Entrance gate, automated

Modern design

Open plan

Shower

Distances

Amenities

 550 m

Airport

 23.7 km

Sea

 3.5 km

Public transport

 500 m


Resort

 3.5 km

Contact us



Stavroula Michail

 (+357) 99810880

 stavroulamichail.lextrus@gmail.com

