



#9273

# MODERN 3 BEDROOM BUNGALOW HOUSE IN PAPHOS (9273)

📍 Tala, Paphos

€685,000 +VAT





# Overview

## Specifications

Bedrooms

 3

Bathrooms

 3

Covered

 159 m<sup>2</sup>

Type	<b>Bungalow</b>
Showers	<b>1</b>
Toilets	<b>1</b>
Covered veranda	<b>45 m<sup>2</sup></b>
Uncovered veranda	<b>12 m<sup>2</sup></b>
Covered parking	<b>20 m<sup>2</sup></b>

Status	<b>Off plan</b>
Year of construction	<b>2026</b>
Furnished	<b>Unfurnished</b>
Structure	<b>Concrete</b>
Facade	<b>Concrete</b>
Energy efficiency rating	 <b>A+</b>

## Description

MODERN 3 BEDROOM BUNGALOW HOUSE IN PAPHOS (9273)

PRICE: 685,000 EURO PLUS VAT

Discover this stunning 3-bedroom, 3-bathroom bungalow located in the picturesque village of Tala, Paphos. Nestled in a peaceful area with scenic views, this property offers a perfect blend of comfort, style, and tranquility.

Key Features:

**Spacious Living Areas:** Open-plan design with a bright and airy living room, perfect for family gatherings.

**3 Bedrooms:** Generously sized rooms, each offering comfort and privacy.

**3 Bathrooms:** Modern fittings, including en-suite options for added convenience.

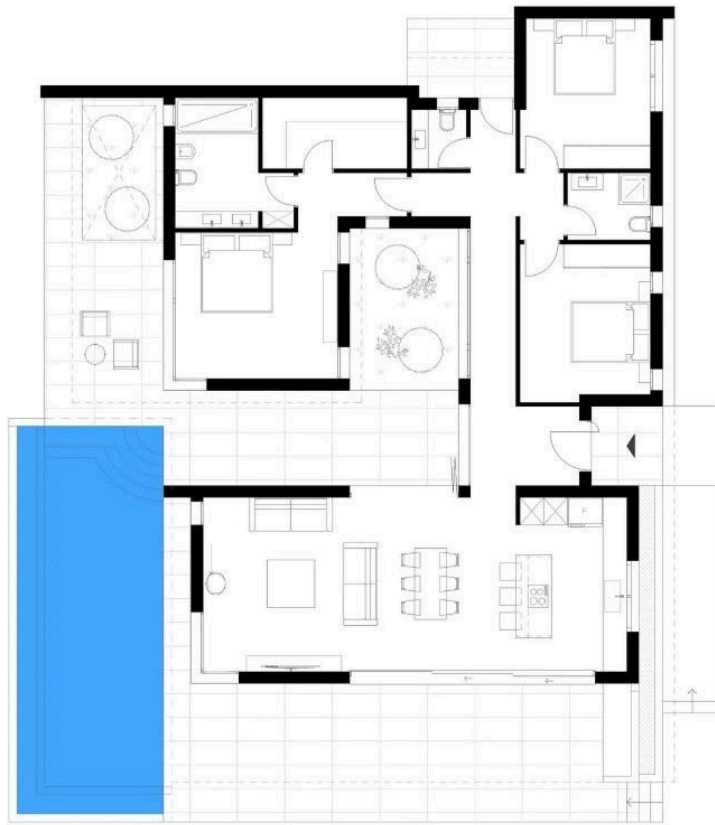
**Outdoor Space:** Private garden and terrace, ideal for relaxing or entertaining.

**Location:** Situated in Tala, a sought-after village known for its beautiful landscapes, local tavernas, and easy access to Paphos city center and nearby beaches.

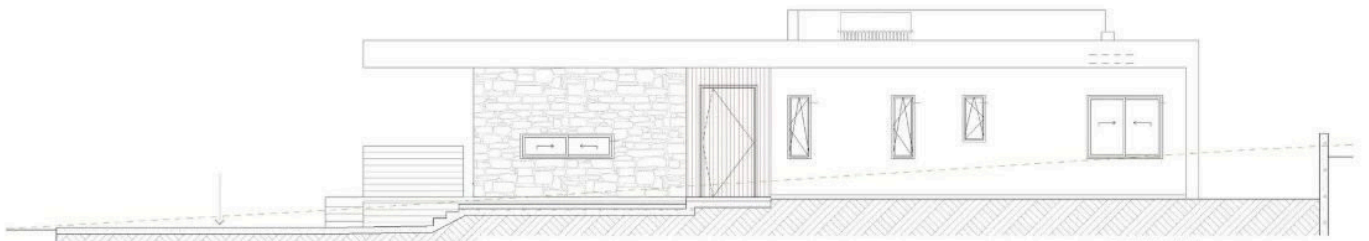
This bungalow is perfect for those seeking a serene lifestyle while remaining close to amenities. Whether you're looking for a family home, a holiday retreat, or a property investment, this gem in Tala is sure to impress.



# Floor plans



GROUND FLOOR PLAN



ΠΛΑΓΙΑ ΟΨΗ



# Additional information

## Facilities

Aircondition, Provision

Parking, Covered

Storage

Heating, Provision

Pool, Private

Landscaped garden

Solar water heater

## Features

Bright

Connected to electric mains

Easy access to main roads

Garden, large

Luxury specifications

Near bus route

Pressurized water system

Spacious rooms

Veranda, large

CCTV (provision)

Double glazing

En suite shower

Granite countertops

Modern design

Open plan

Quiet area

Thermal insulation

Combined kitchen and dining area

Easy access to highway

Garden

Investment opportunity

Near amenities

Pipe-in-pipe plumbing system

Shower

Veranda

## Distances

Amenities



1 km

Airport



23.3 km

Sea



4.5 km

Schools



8.1 km

## Contact us



**Stavroula Michail**

(+357) 99810880

stavroulamichail.lextrus@gmail.com

