



#9190

Lovely 2 Bedroom Apartment in Ypsonas Limassol (9190)

 Ypsonas, Limassol





€285,000 +VAT





Overview

Specifications

Bedrooms		Bathrooms		Covered	
 2		 2		 83 m ²	
Type	Apartment				
Toilets	2				
Status	Under construction				
Year of construction	2026				
Furnished	Unfurnished				
Structure	Concrete				
Facade	Concrete				
Communal charge frequency	Monthly				
Energy efficiency rating	 A				

Description

Lovely 2 Bedroom Apartment in Ypsonas Limassol (9190)

This contemporary 2-bedroom apartment offers an ideal blend of modern design and functionality, perfect for first-time homeowners or as an investment opportunity. Located in Ypsonas, Limassol, the apartment is part of a 3-floor building currently under construction, with a completion date set for April 2026.

Key features include:

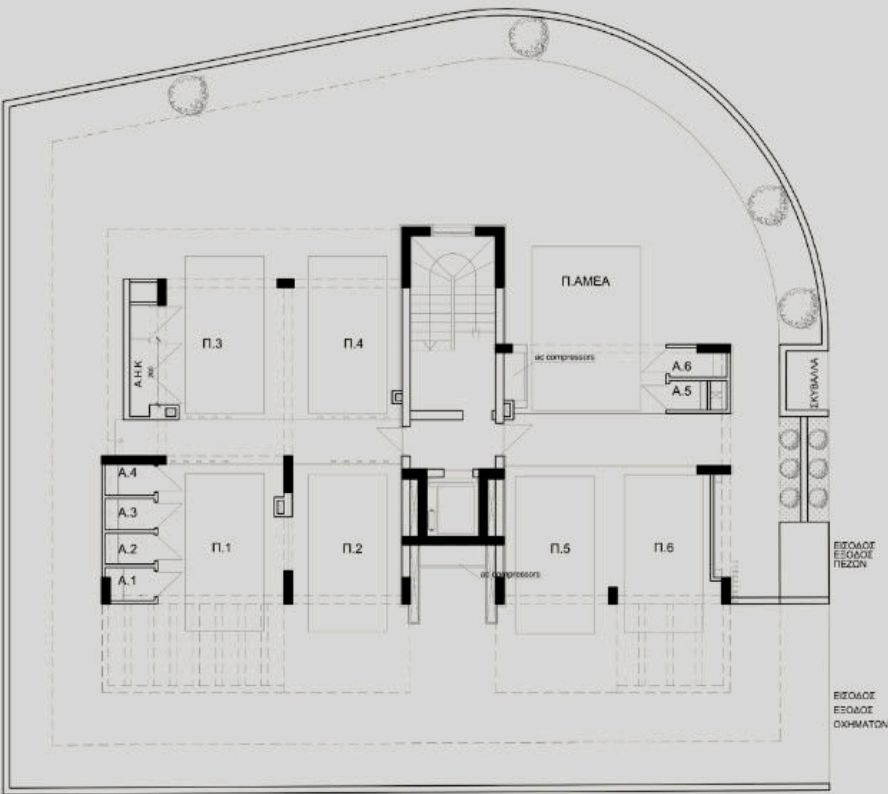
- Total area: 83 m² covered, 14 m² covered veranda
- Energy Efficiency Rating: A
- Floor: top out of 3 floors
- Parking: 1 covered space

Additional highlights:

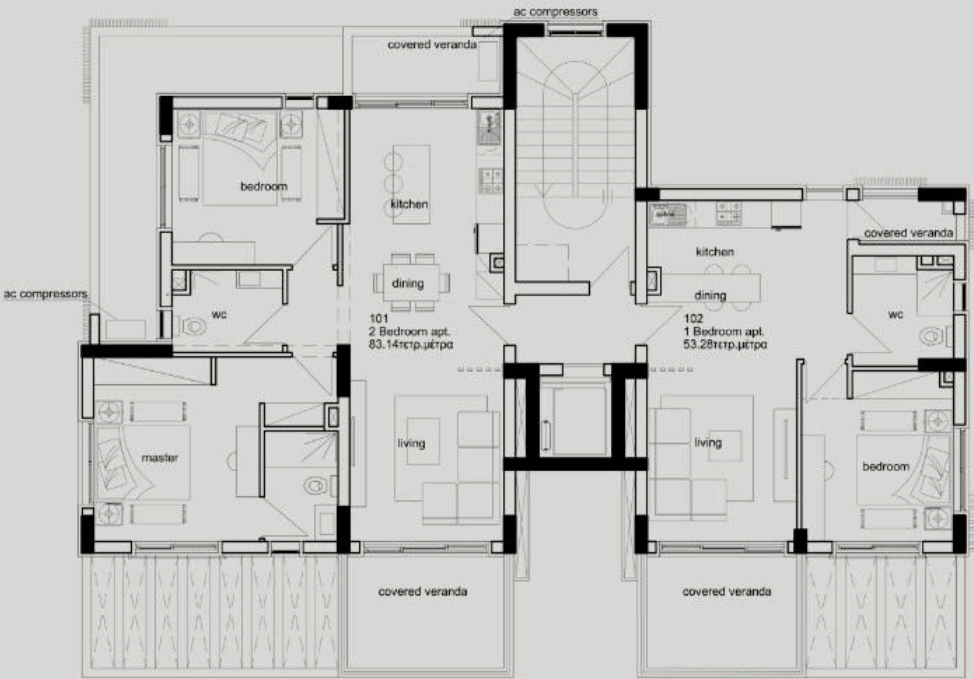
- Provision for air conditioning and heating
- Granite countertops, modern open-plan layout
- Double glazing, thermal insulation, and a pressurized water system
- Easy access to main roads, near bus routes and amenities
- Secure building with an automated entrance gate
- Storage space and solar water heater included



Floor plans



Ground Floor



First Floor	Apt.	Bedrooms	C. Area m ²	C. Veranda m ²	Parking Lots	Total Area m ²
	101	1	54	12	1	66
	102	2	83	14	1	98



Additional information

Facilities

Aircondition, Provision

Parking, Covered

Elevator

Solar water heater

Heating, Provision

Storage

Features

City view

Double glazing

Entrance gate, automated

Modern design

Open plan

Thermal insulation

Combined kitchen and dining area

Easy access to main roads

Granite countertops

Near amenities

Pressurized water system

Veranda

Connected to electric mains

Entrance gate

Investment opportunity

Near bus route

Rental potential

Distances

Amenities



800 m

Sea



9 km

Schools




500 m

Contact us



Stefania Spyridou

 (+357) 99810880

 stephaniaSpyridou@gmail.com

