

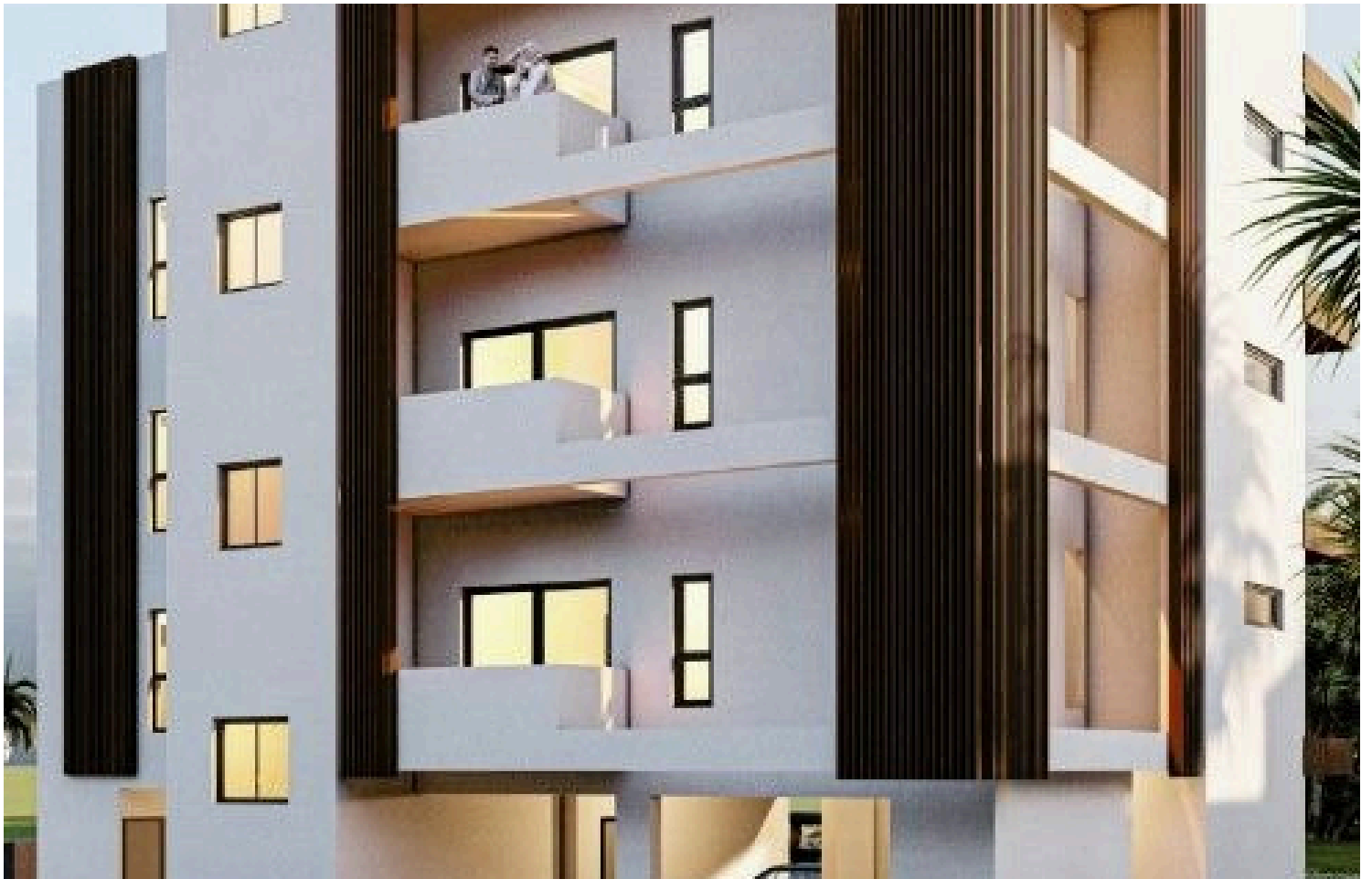


#9188

Lovely 2 Bedroom Apartment in Ypsonas Limassol (9188)

📍 Ypsonas, Limassol





€275,000 +VAT





Overview

Specifications

Bedrooms	Bathrooms	Covered	
 2	 2	 54 m ²	
Type	Apartment	Structure	Concrete
Toilets	2	Facade	Concrete
Status	Under construction	Communal charge frequency	Monthly
Year of construction	2025	Energy efficiency rating	 A
Furnished	Unfurnished		

Description

Lovely 2 Bedroom Apartment in Ypsonas Limassol (9188)

This contemporary 2-bedroom apartment offers an ideal blend of modern design and functionality, perfect for first-time homeowners or as an investment opportunity. Located in Ypsonas, Limassol, the apartment is part of a 3-floor building currently under construction, with a completion date set for August 2025.

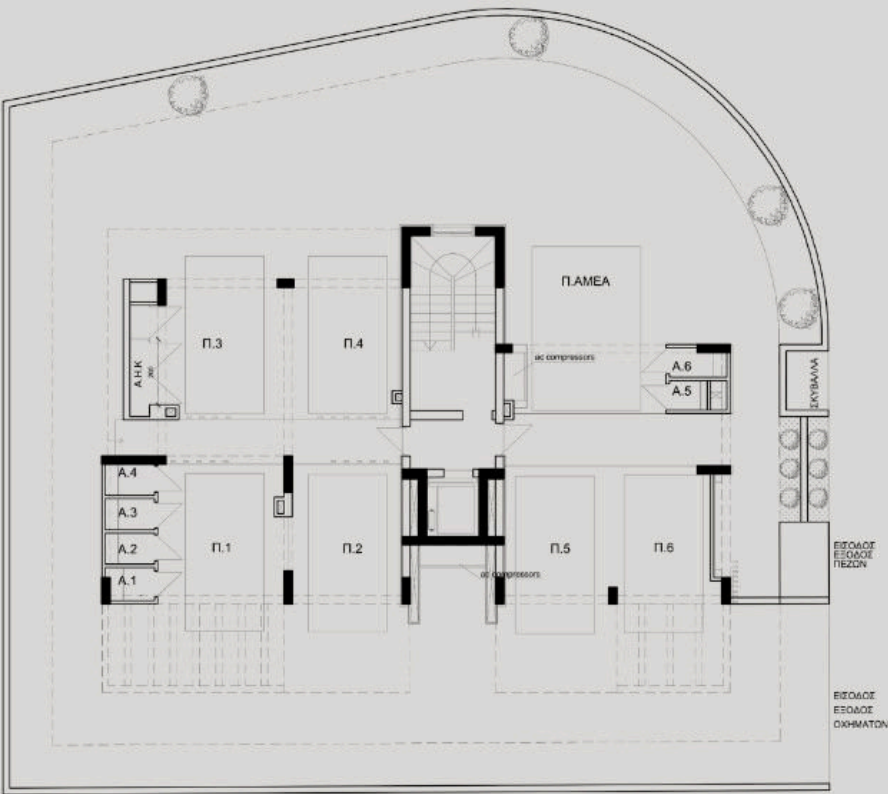
Key features include:

- Total area: 83 m² covered, 14 m² covered veranda
- Energy Efficiency Rating: A
- Floor: 1st out of 3 floors
- Parking: 1 covered space

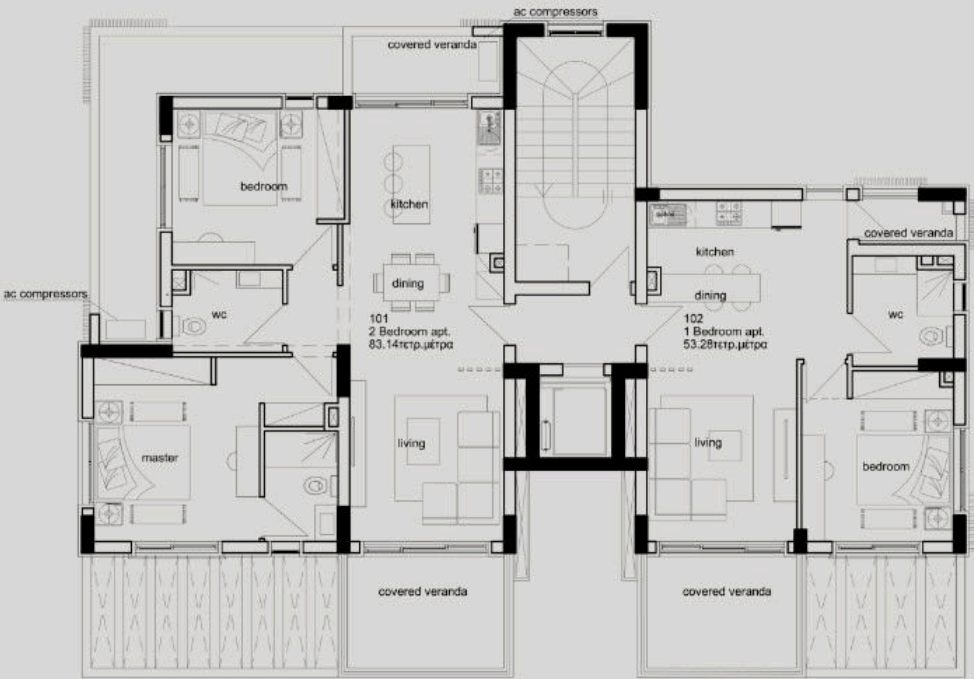
Additional highlights:

- Provision for air conditioning and heating
- Granite countertops, modern open-plan layout
- Double glazing, thermal insulation, and a pressurized water system
- Easy access to main roads, near bus routes and amenities
- Secure building with an automated entrance gate
- Storage space and solar water heater included

Floor plans



Ground Floor



First Floor	Apt.	Bedrooms	C. Area m ²	C. Veranda m ²	Parking Lots	Total Area m ²
	101	1	54	12	1	66
	102	2	83	14	1	98

Additional information

Facilities

Aircondition, Provision

Parking, Covered

Elevator

Solar water heater

Heating, Provision

Storage

Features

City view

Double glazing

Entrance gate, automated

Modern design

Open plan

Thermal insulation

Combined kitchen and dining area

Easy access to main roads

Granite countertops

Near amenities

Pressurized water system

Veranda

Connected to electric mains

Entrance gate

Investment opportunity

Near bus route

Rental potential

Distances

Amenities



800 m

Sea



9 km

Schools



500 m

Contact us



Stefania Spyridou

 (+357) 99810880

 stephaniaSpyridou@gmail.com