



#9128

Modern Studio Apartment in the Heart of Larnaca City Center (9128)

📍 Center, Larnaca

€192,000 +VAT





Overview

Specifications

Bedrooms

 **Studio**

Bathrooms

 **1**

Covered

 **30 m²**

Type	Apartment
Toilets	1
Covered veranda	10 m²
Status	Off plan
Year of construction	2026

Furnished	Unfurnished
Structure	Concrete
Facade	Concrete
Communal charge frequency	Monthly
Energy efficiency rating	 A

Description

Modern Studio Apartment in the Heart of Larnaca City Center (9128)

Price: €192,000 + VAT

Status: Off Plan

Floor: 3rd of 4 Floors

Living Space: 30 m²

Covered Veranda: 10 m²

Experience vibrant city living in this stylish studio apartment, perfectly situated in the heart of Larnaca's city center. With its sleek design and modern finishes, this unfurnished space offers an open-plan layout ideal for a cozy yet contemporary lifestyle.

Key Features:

Prime Location: Just 150 meters from the beautiful sea and within walking distance to all local amenities, including shops, schools, and public transport, making everyday living a breeze.

No parking available.

Exceptional Connectivity: Located 5.5 km from the airport and easily accessible to main roads, ensuring seamless travel in and out of the city.

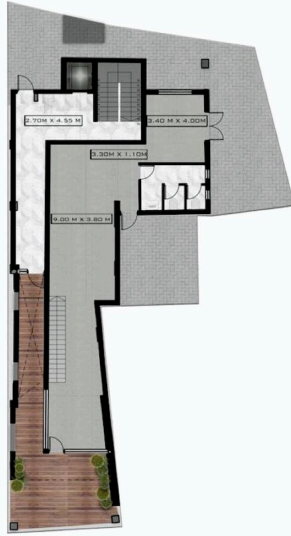
Energy Efficient: Rated A for energy efficiency, featuring high-quality aluminum frames and a solar water heater.

Comfort & Convenience: Provision for air conditioning and heating, as well as a communal elevator for easy access.

Investment Opportunity: Ideal for first-time buyers or investors seeking rental potential, with the property situated

Floor plans

GROUND FLOOR



106.5 SQM Covered Internal Area

MEZZANINE



78 SQM Covered Internal Area
7 SQM Covered Veranda

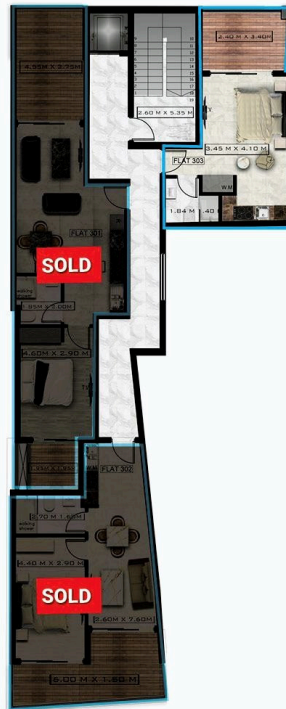
Ermou Street ▼



Areas & Plans are not final and are subject to modifications

3RD FLOOR

301 ▶



◀ **303**
Studio
1 Bathroom
30 SQM Internal Area
10 SQM Covered Veranda

302 ▶

Ermou Street ▼



Areas & Plans are not final and are subject to modifications

Additional information

Facilities

Aircondition, Provision

Elevator

Heating, Provision

Solar water heater

Storage

Features

City view

Easy access to main roads

Entrance gate

Entrance gate, automated

Granite countertops

Heart of city center

Investment opportunity

Near amenities

Near bus route

Open plan

Rental potential

Veranda

Distances

Amenities

 0 m

Airport

 5.5 km

Sea

 150 m

Public transport

 250 m

Schools

 300 m


Resort

 7.5 km

Contact us



Stavroula Michail

 (+357) 99810880

 stavroulamichail.lextrus@gmail.com