



#8503

"Exquisite Contemporary Retreat: Spacious 3-Bedroom Villa in Serene Emba" (8503)

📍 Empa, Paphos

€470,000 +VAT





Overview

Specifications

Bedrooms



3

Bathrooms




2

Covered



132.94 m²

Type	Detached Villa
Toilets	3
Plot	188.93 m²
Covered veranda	14.96 m²
Uncovered veranda	4.9 m²
Status	Off plan

Year of construction	2027
Furnished	Optional furnished
Structure	Concrete
Facade	Concrete
Communal charge frequency	Monthly
Energy efficiency rating	 A

Description

"Exquisite Contemporary Retreat: Spacious 3-Bedroom Villa in Serene Emba" (8503)

Introducing our newest development in the charming village of Emba, where contemporary living meets serene surroundings. This project offers a harmonious blend of 17 exquisite villas and 19 modern apartments, all strategically located for your convenience. | Completion Day March 2027.

Location:

Nestled in the heart of Emba, this development combines the tranquillity of suburban living with easy access to Paphos city center and all essential amenities. Enjoy the best of both worlds with this ideal location.

Villas:

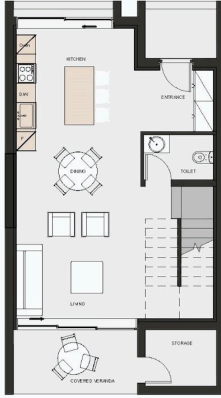
17 Exquisite Villas: The villas in this project are a true symbol of luxury and spaciousness. With multiple bedrooms and abundant living space, they're perfect for families looking for a contemporary and peaceful lifestyle.

Features:

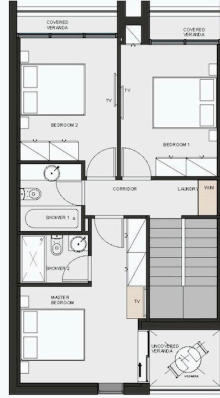
All units within this project feature top-notch finishes, modern amenities, and thoughtful design that maximizes comfort and natural light. Whether you choose an apartment or a villa, you're assured of quality living.

Floor plans

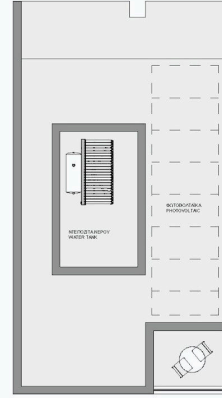
TYPE A1
TOTAL BUILT: 132.94m²
TOTAL COVERED: 82.71m²



GROUND FLOOR BUILT: 68.18m²



FIRST FLOOR BUILT: 64.76m²



ROOF COVERAGE: 82.71m²

MASTERPLAN GROUND FLOOR



Additional information

Facilities

Aircondition, Provision

Gym

Pool, Communal

Solar water heater

Elevator

Landscaped garden

Sauna

Storage

Gated complex

Parking, Covered

Solar photovoltaic panels (provision)

Features

Bath

Double glazing

Garden

Guest WC

Open plan

Veranda

Combined kitchen and dining area

Entrance gate

Garden, large

Investment opportunity

Pool bar

Connected to electric mains

Entrance gate, automated

Granite countertops

Modern design

Thermal insulation

Distances

Amenities

 1 km

Airport

 19 km

Sea

 2.7 km

Public transport

 1 km

Schools

 500 m


Resort

 4 km

Contact us



Stavroula Michail

 (+357) 99810880

 stavroulamichail.lextrus@gmail.com