



#8485

LUXURIOUS 3 BEDROOM VILLA IN PAPHOS (8485)

 Konia, Paphos

€565,000 +VAT





Overview

Specifications

Bedrooms

 3

Bathrooms

 2

Type	Detached Villa
Showers	1
Toilets	1
Plot	266 m²
Covered veranda	23 m²
Uncovered veranda	66 m²

Roof garden	25 m²
Status	Under construction
Furnished	Fully furnished
Structure	Concrete
Facade	Concrete
Energy efficiency rating	 A

Description

LUXURIOUS 3 BEDROOM VILLA IN PAPHOS (8485)

€565,000 PLUS VAT

3 BEDROOMS

Ground Floor Internal: 79 m2

First Floor Internal: 85 m2

Roof Garden Area: 25 m2

Covered Verandas: 23 m2

Uncovered Verandas: 66 m2

Covered Parking: 17 m2

Covered BBQ: 4 m2

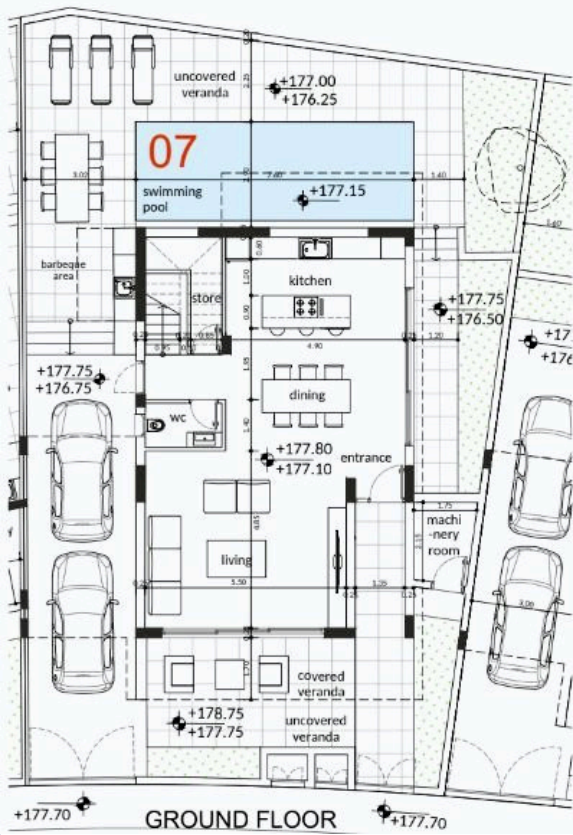
Plant Room: 4 m2

Swimming Pool: 3 x 7.6 m2

Brand-new villa development located in the highly sought-after residential area of Konia, in Paphos. This project encompasses a collection of 12 meticulously designed villas, boasting a harmonious fusion of traditional and modern architectural elements.

Each villa within Evo Homes offers a unique and lavish living space, meticulously designed to exude luxury and

Floor plans



GROUND FLOOR

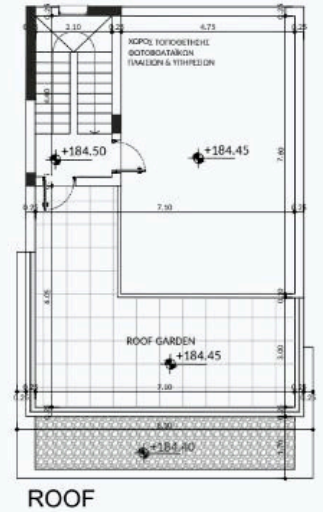
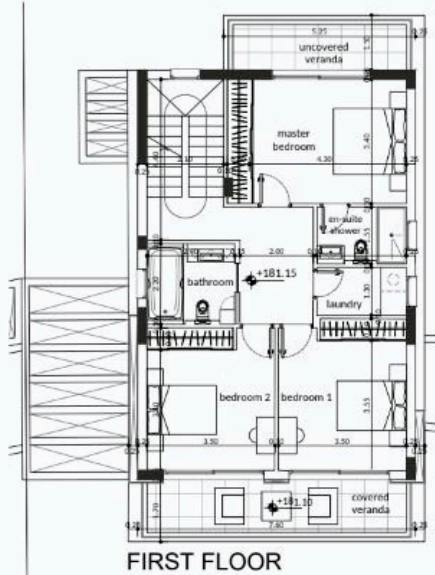
PLOT SIZE: 266m²
 INDOORS COVERED AREA: 79.00m²
 COVERED ENTRANCE: 8.00m²
 COVERED VERANDAS: 10.00m²
 COVERED PARKING: 17m²
 COVERED BBQ: 4.00m²
 UNCOVERED VERANDAS: 58.00m²
 MACHINERY ROOM: 4.00m²

FIRST FLOOR

INDOORS COVERED AREA: 85.00m²
 COVERED VERANDAS: 13.00m²
 UNCOVERED VERANDAS: 8.00m²

ROOF

INDOORS COVERED AREA: 13.00m²
 ROOF GARDEN: 25.00m²



Additional information

Facilities

Aircondition, Provision

Parking, Covered

Solar water heater

Elevator

Pool, Optional

Storage

Heating, Provision

Solar photovoltaic panels (provision)

Features

Bright

Easy access to highway

Modern design

CCTV

Easy access to main roads

Near amenities

Double glazing

Granite flooring

Near bus route

Distances

Amenities



1 km

Sea



6.1 km

Contact us



Barbara Gauduchon

 (+357) 97814298

 b.gauduchon.papavgoulis@gmail.com