



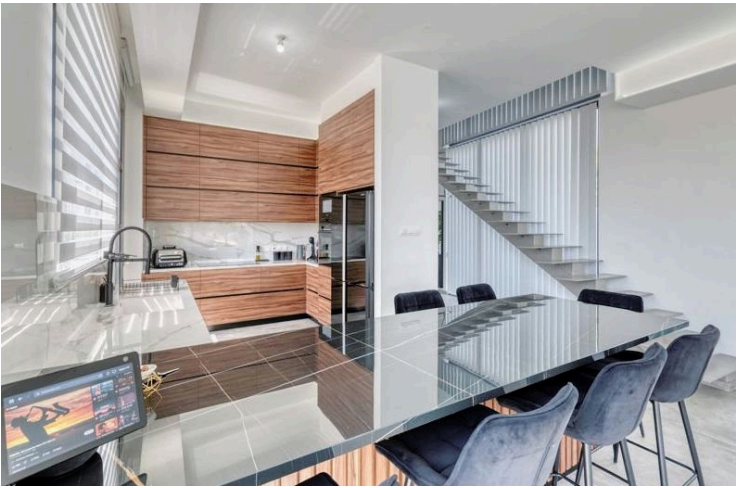
#8370

Prestigious 4-Bedroom Detached Villa in Aradippou, Larnaca – Luxury Living with Land Deeds (8370)

📍 Aradippou, Larnaca





€850,000





Overview

Specifications

Bedrooms		Bathrooms		Covered	
 4		 4		 310 m ²	
Type	Detached Villa				
Toilets	4				
Plot	557 m ²				
Status	Resale				
Year of construction	2023				
Title deed	Yes				
Furnished	Fully furnished				
Structure	Concrete				
Facade	Concrete				
Energy efficiency rating	 Certificate expected				

Description

Prestigious 4-Bedroom Detached Villa in Aradippou, Larnaca – Luxury Living with Land Deeds

Presenting a remarkable opportunity to own a beautifully designed, fully furnished villa in one of Larnaca’s most sought-after residential areas—Aradippou. Built to the highest standards, this spacious 4-bedroom detached villa is set on a generous 557m² plot and offers 310m² of elegant interior space, seamlessly blending modern design with practical family living.

Whether you're seeking a luxurious permanent residence or a high-yield investment property, this home offers the perfect balance of comfort, location, and value.

Property Highlights:

- ? 4 Spacious Double Bedrooms
 - Including a ground-floor bedroom with direct outdoor access
 - Master suite with walk-in wardrobe and private balcony
- ? Open-Plan Living & Dining Area
 - Modern fully fitted kitchen with high-end finishes
 - Seamless flow to outdoor verandas and garden
- ? Entertainment & Multi-Use Spaces
 - Dedicated children’s playroom on the ground floor
 - Game room with WC on the lower ground floor



Additional information

Facilities

Aircondition, Split system

Pool, Private

Storage

Childrens playground

Solar photovoltaic panels

Parking, Garage

Solar water heater

Features

Balcony

Bright

Easy access to highway

Energy efficient doors/windows

High ceilings

Luxury specifications

Near bus route

Own water supply

Shower

Barbeque

City view

Easy access to main roads

Garden

Kitchen appliances

Modern design

Open plan

Play room

Bath

Double glazing

En suite shower

Guest WC

Kitchen island

Near amenities

Openings in opposite sides

Pressurized water system

Distances

Amenities



1 km

Airport



11 km

Sea



11 km

Public transport



1 km

Schools



200 m

Resort



12 km

Contact us



Giorgos Tsiampos

 (+357) 99982112

 infolextrusrealestate@gmail.com

