



#8210

# Amazing 2 Bedroom Semi Detached House in Livadia , Larnaca (8210)

📍 Livadia, Larnaca





**€350,000** +VAT





# Overview

## Specifications

Bedrooms		Bathrooms		Covered	
 2		 3		 102 m <sup>2</sup>	
Type	Semi-Detached House				
Toilets	3				
Plot	150 m <sup>2</sup>				
Status	Off plan				
Year of construction	2026				
Furnished	Unfurnished				
Structure	Concrete				
Facade	Concrete				
Energy efficiency rating	 A				

## Description

Amazing 2 Bedroom Semi Detached House in Livadia , Larnaca (8210)

Price: €350,000 + VAT  
Move-in Ready: March 31, 2026

This stunning off-plan 2-bedroom semi-detached house in Livadia, Larnaca, offers modern living in a prime location. With 102 m<sup>2</sup> of covered space on a 150 m<sup>2</sup> plot, the home features a spacious open-plan design, 3 bathrooms, a guest WC, a bright living area, and a sleek kitchen with granite countertops.

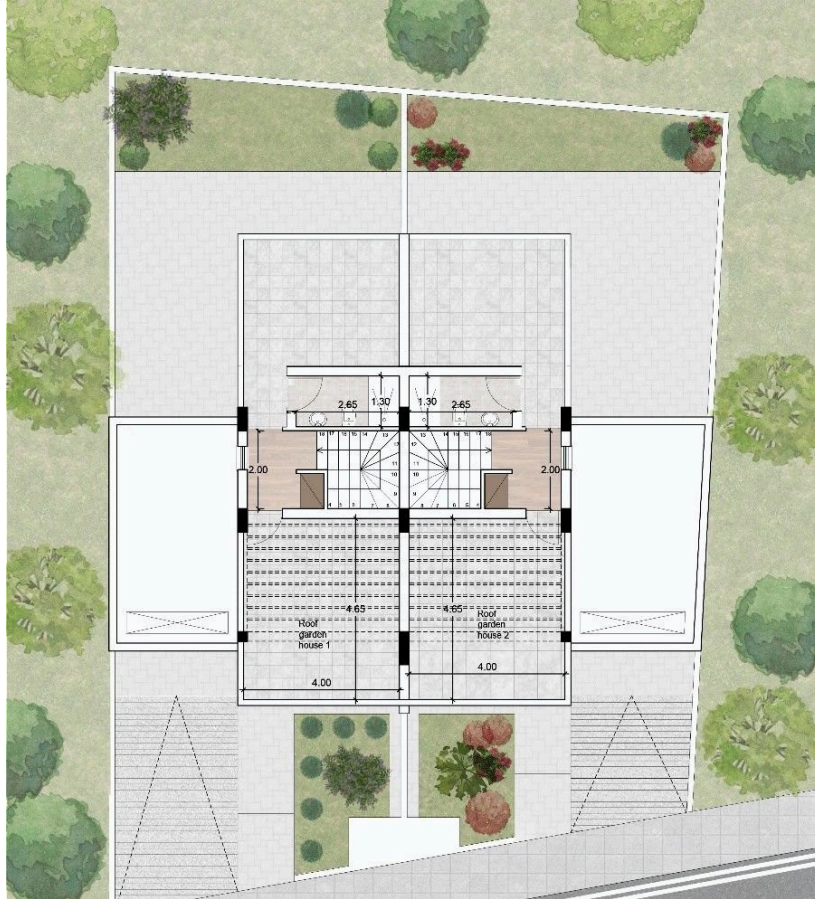
Enjoy a private 100 m<sup>2</sup> garden, balcony, veranda, covered parking, and storage space. The property is equipped with provisions for air conditioning and heating, a solar water heater, double glazing, thermal insulation, and an automated entrance gate. Rated energy efficiency "A," it's ideal for comfort and sustainability.

Located just 4 km from the sea, with easy access to local amenities, public transport, and schools, this property offers convenience and a great investment opportunity.





# Floor plans



# Additional information

## Facilities

Aircondition, Provision

Solar water heater

Heating, Provision

Storage

Parking, Covered

## Features

Balcony

Bright

Entrance gate

Granite countertops

Investment opportunity

Shower

Barbeque

Double glazing

Entrance gate, automated

Guest WC

Open plan

Thermal insulation

Bath

Easy access to main roads

Garden

Internal stairs

Pressurized water system

Veranda

## Distances

Amenities



750 m

Airport



20.4 km

Sea



4 km

Public transport



600 m

Schools



1.3 km

Resort



5 km

## Contact us



**Stefania Spyridou**

☎ (+357) 99810880

✉ [stephaniaspyridou@gmail.com](mailto:stephaniaspyridou@gmail.com)

