



#8024

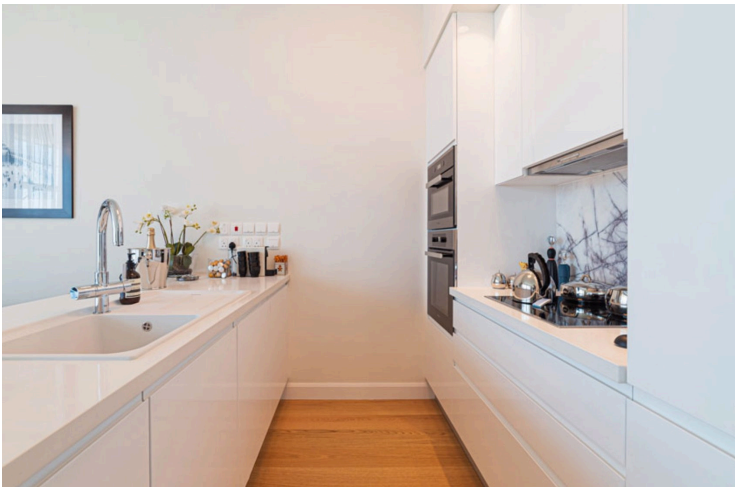
# Modern 3-Bedroom Apartment in Limassol, Potamos Germasogeias (8023)

📍 Germasogeia Tourist Area, Limassol

€1,550,000 +VAT







# Overview

## Specifications

Bedrooms

 3


Bathrooms

 2

Covered

 124.2 m<sup>2</sup>

Type	<b>Apartment</b>
Toilets	<b>2</b>
Status	<b>Under construction</b>
Year of construction	<b>2024</b>
Furnished	<b>Optional furnished</b>

Structure	<b>Concrete</b>
Facade	<b>Concrete</b>
Communal charge frequency	<b>Monthly</b>
Energy efficiency rating	 <b>A</b>

## Description

•Modern 3-Bedroom Apartment in Limassol, Potamos Germasogeias (8023)

Description:

- Indoor Area: 124.2m<sup>2</sup>
- Covered Veranda: 32.8m<sup>2</sup>
- Common Area: 37.1m<sup>2</sup>
- Storage Area: 2.7 m<sup>2</sup>
- Total Size: 343.8m<sup>2</sup>
- Location: First Floor
- Bedrooms: 3
- Bathrooms: 2 (one shower and one bath)
- Pool: Private swimming pool

•Major Benefits:

- Situated in a tranquil residential area in Limassol's tourist zone
- 800 meters from sandy beaches and nearby the 5-star Apollonia Hotel
- High ceilings (3.15 meters) and modern architectural design
- Expected completion date: July 2026

This layout highlights the key features and benefits of the apartment while keeping the details clear and concise for



# Additional information

## Facilities

Aircondition, Central system

Heating, Central

Parking, Covered

Pool, Communal

Storage

## Features

Balcony

City view

Double glazing

Granite countertops

Guest WC

Investment opportunity

Luxury specifications

Modern design

Municipal water/sewage

Open plan

Rental potential

Thermal insulation

Veranda

Veranda, large

Walk-in closet

Walking distance to beach

## Distances

Amenities

 1 km

Airport

 40 km

Sea

 1 km

Public transport

 1 km

Schools

 1 km


Resort

 1 km

## Contact us



**Stefania Spyridou**

 (+357) 99810880

 stephaniaSpyridou@gmail.com

