



#7995

# Luxurious Duplex in Limassol

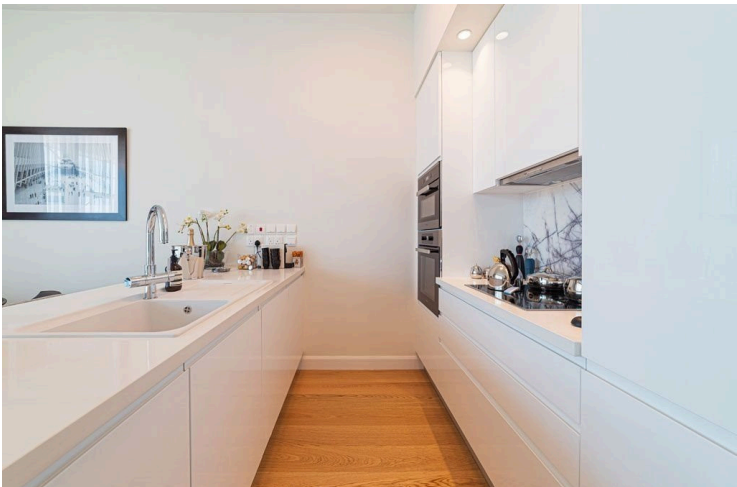
## Price: 1.610.000 (7995)

📍 Germasogeia, Limassol

€1,610,000 +VAT











# Overview

## Specifications

Bedrooms		Bathrooms		Covered	
 2		 1		 98.9 m <sup>2</sup>	
Type		Apartment			
Showers		1			
Toilets		2			
Plot		161.1 m <sup>2</sup>			
Status		Off plan			
Year of construction		2026			
Structure		Concrete			
Facade		Concrete			
Communal charge frequency		Monthly			
Energy efficiency rating		 A			

## Description

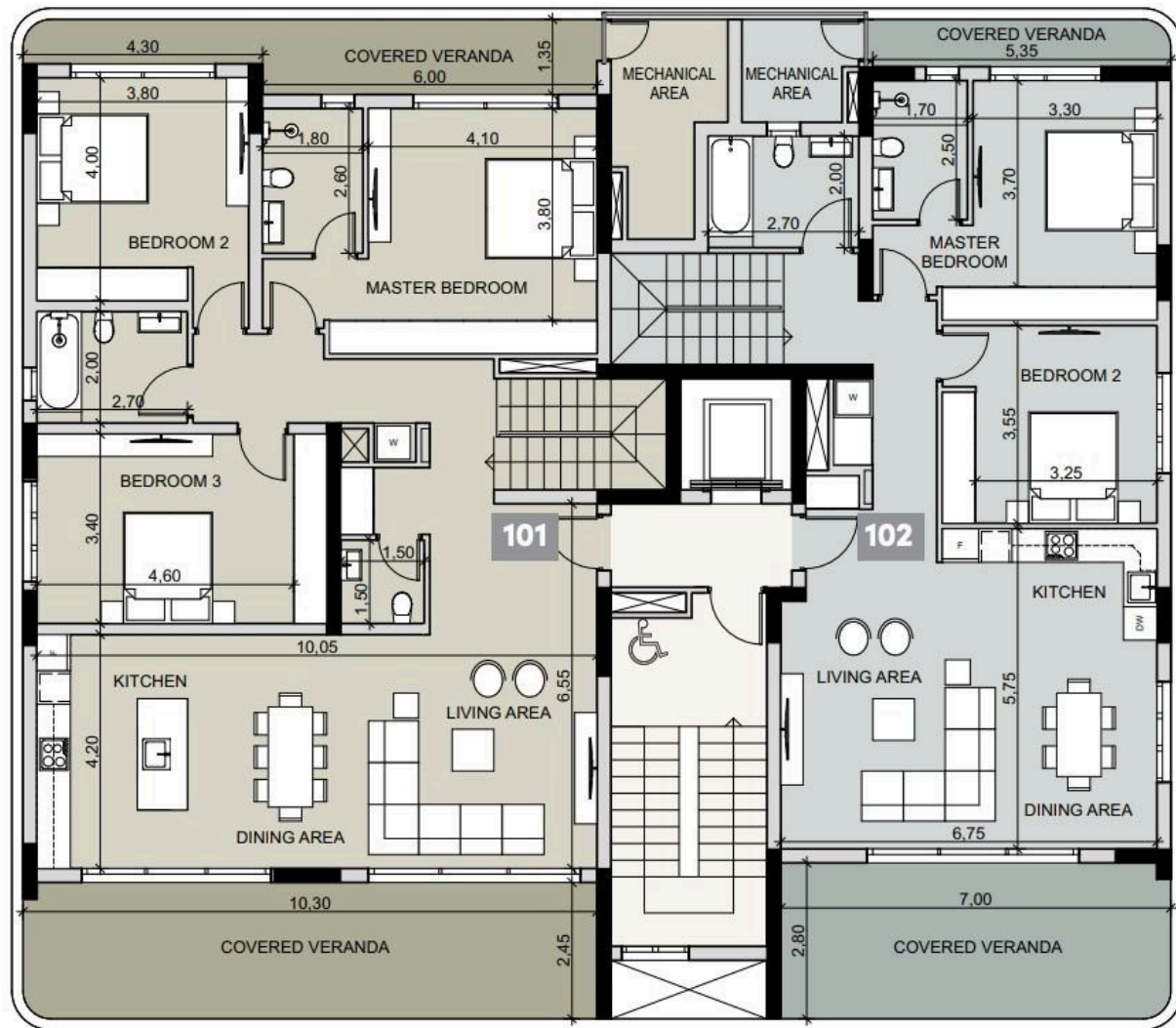
Luxurious Duplex in Limassol Price: 1.610.000 (7995)

- Location: Limassol, 500 meters from sandy beach and city amenities
- Architecture: Landmark design by one of London’s leading architects
- Common Area: 35 m<sup>2</sup>
- Total Area: 161.1m<sup>2</sup>
- Indoor Area: 98.9 m<sup>2</sup>
- Covered Veranda: 27.2 m<sup>2</sup>
- Rooms: 2 Bedrooms, 1 Shower, 1 Bath
- Exclusive Features:
- Duplex with access to a common pool
- Internal Infrastructure:
- Outdoor and indoor pools
- Gym, sauna, and lounge area
- Kids club
- Covered parking
- Large landscaped gardens
- Price: €1,610,000





# Floor plans



# Additional information

## Facilities

Aircondition, Provision

Heating, Provision

Pool, Private

Elevator

Landscaped garden

Sauna

Gym

Parking, Covered

## Features

Balcony

CCTV (provision)

Easy access to highway

Modern design

Sea front

Bath

Ceramic tiles

Easy access to main roads

Near amenities

Sea view

Bathroom underfloor heating

Double glazing

High ceilings

Roof garden

Veranda

## Distances

Amenities



300 m

Airport



66.5 km

Sea



500 m

Schools




7 km

## Contact us



**Karisse Lantin**

 (+357) 97908980

 stavroulamichael1977@gmail.com

