



#7442

# Luxurious 3 Bedroom SeaView Apartment in Limassol Marina (7442)

📍 Limassol Marina, Limassol

€1,590,000 +VAT





# Overview

## Specifications

Bedrooms

 3


Bathrooms

 3

Covered

 143 m<sup>2</sup>

Type	<b>Apartment</b>
Toilets	<b>3</b>
Status	<b>Under construction</b>
Year of construction	<b>2027</b>
Furnished	<b>Unfurnished</b>

Structure	<b>Concrete</b>
Facade	<b>Glass</b>
Communal charge frequency	<b>Monthly</b>
Energy efficiency rating	 <b>A</b>

## Description

Luxurious 3 Bedroom SeaView Apartment in Limassol Marina (7442)

@EUR 1.590.000 +VAT | Completion Day : March 2027

Welcome to the epitome of luxury living in the heart of Limassol. Nestled in the vibrant city center, this exquisite 3-bedroom SeaView apartment offers an unparalleled living experience with breathtaking panoramic vistas of the shimmering Mediterranean Sea. Imagine waking up every day to the soothing sounds of the waves and enjoying your morning coffee while gazing at the stunning sea views from the comfort of your own home. With Covered Internal Area of 143 sq.m & Covered Veranda 42 sq.m.

Designed with award-winning architecture, this apartment perfectly blends contemporary elegance with the serene beauty of its surroundings. Built to the highest standards, it boasts top-quality finishes and meticulous attention to detail, ensuring an opulent living environment that is both sophisticated and comfortable.

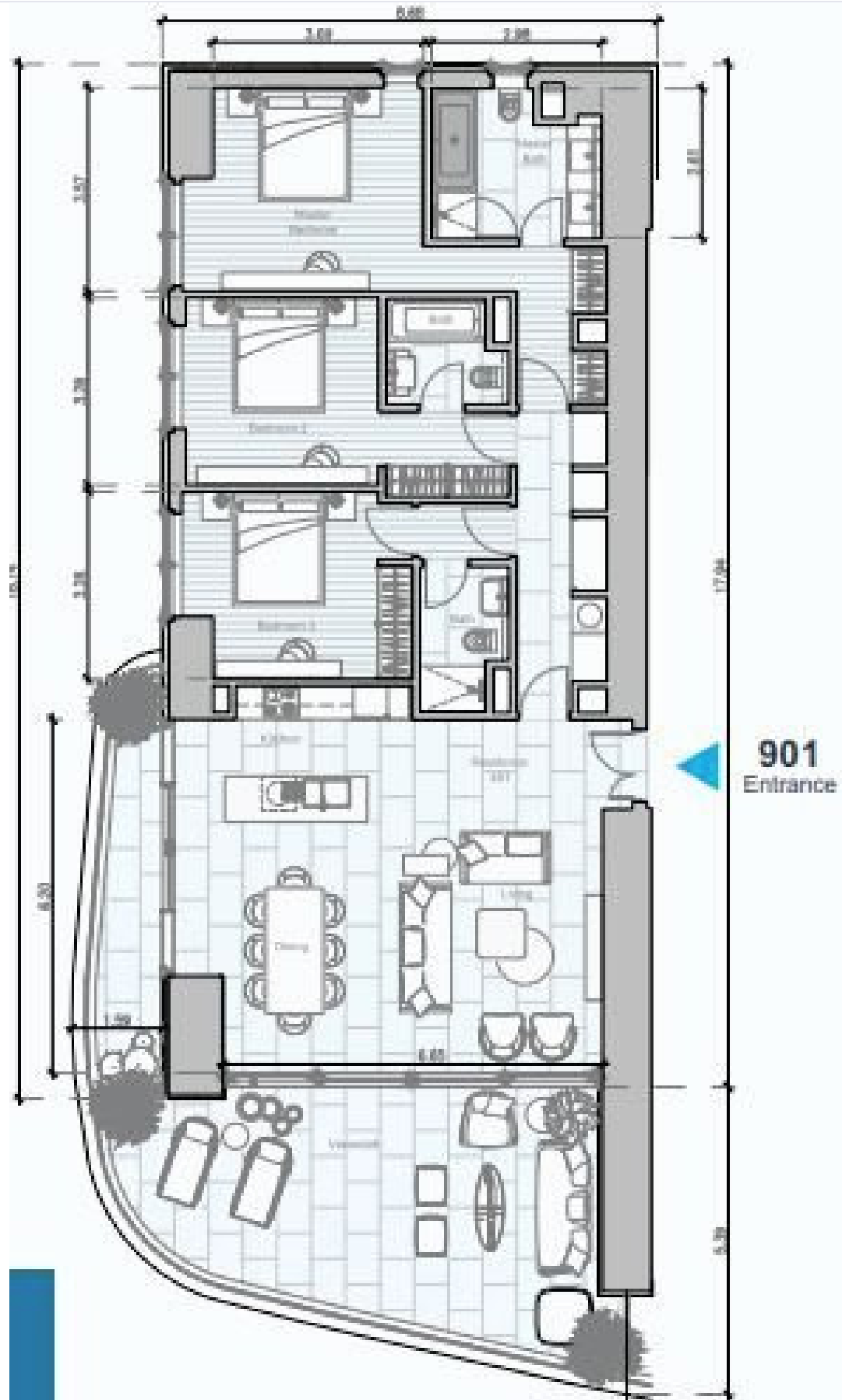
**Stunning Mediterranean Sea Views:** This luxury apartment offers unobstructed views of the Mediterranean, allowing you to enjoy the beauty of the sea from sunrise to sunset. The floor-to-ceiling windows flood the apartment with natural light, highlighting the breathtaking scenery and creating an ambiance of serenity and tranquility.

**Spacious En-suite Bathroom:** The en-suite bathroom is a haven of luxury and comfort, featuring high-end fixtures, elegant design, and a soothing atmosphere, providing a perfect retreat to unwind after a long day.

**Thermal Insulation & Double Glazing:** State-of-the-art thermal insulation and double glazing ensure optimal comfort



# Floor plans



# Additional information

## Facilities

Aircondition, Central system

Elevator

Heating, Underfloor

Pool, Communal

Solar water heater

Childrens playground

Gated complex

Indoor pool, Communal

Sauna

Spa

Clubhouse

Gym

Parking, Underground

Solar photovoltaic panels

Storage

## Features

Alarm system (provision)

Bright

Double glazing

Entrance gate, automated

Guest WC

Luxury specifications

Open plan

Rental potential

Sea view

Spacious rooms

Walking distance to beach

Bar

CCTV (provision)

Easy access to main roads

Fitted wardrobes

Heart of city center

Modern design

Panoramic view

Roof garden

Shower

Thermal insulation

Bath

City view

En suite shower

Granite countertops

High ceilings

Near amenities

Pressurized water system

Sea front

Shutters, electric

Walk-in closet

## Distances

Amenities



100 m

Sea



10 m

Public transport



100 m

Schools



700 m

Resort



90 m



## Contact us



**Stefania Spyridou**

☎ (+357) 99810880

✉ [stephaniaspyridou@gmail.com](mailto:stephaniaspyridou@gmail.com)

