



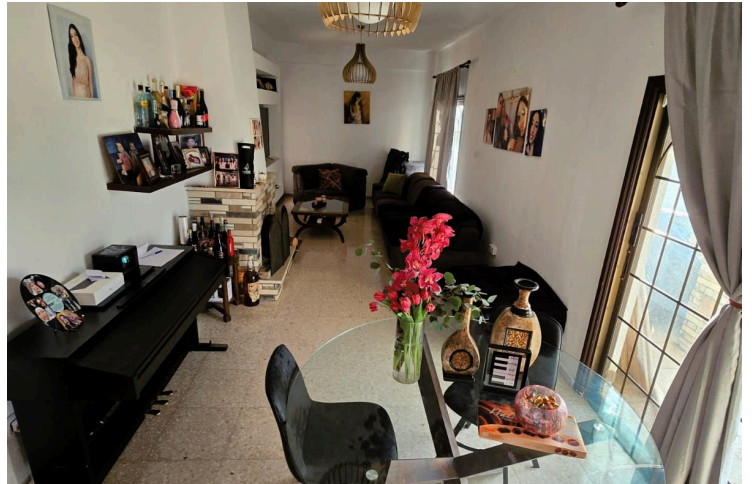
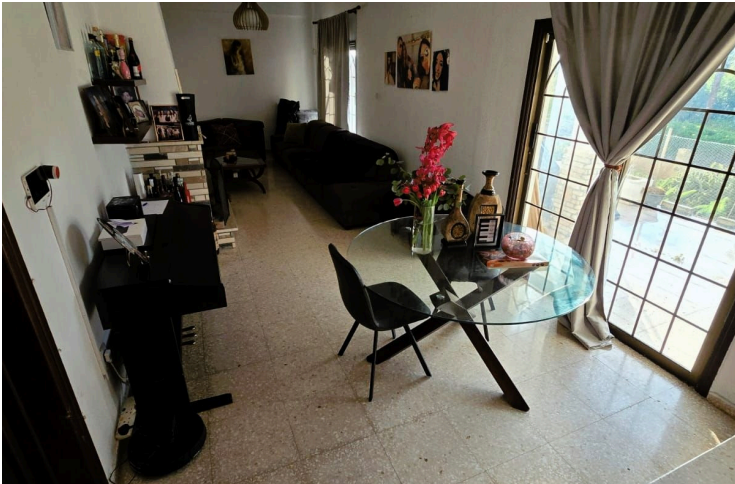
#7314

Timeless 5-Bedroom Residence with Ample Space in Emba Village, Paphos (7314)

📍 Empa, Paphos

€390,000





Overview

Specifications

Bedrooms

 5


Bathrooms

 2

Covered

 220 m²

Type	House
Toilets	2
Plot	789 m²
Status	Resale
Year of construction	1989

Title deed	Yes
Furnished	Partially furnished
Structure	Concrete
Facade	Concrete
Energy efficiency rating	 Certificate expected

Description

Timeless 5-Bedroom Residence with Ample Space in Emba Village, Paphos (7314)

Price: €390,000

Discover this extensive 5-bedroom property in the charming Emba Village, Paphos. Priced at €390,000, this 38-year-old residence offers a generous plot and ample living space, making it an excellent investment for families or those looking for a spacious home with character.

Type: Detached House

Age: 38 years | Plot Area: 789 m² | Covered Area: 220 m²

Bedrooms: 5 (3 main bedrooms plus 2 additional bedrooms)

Zoning and Development Potential | Plot Rate: 90%, offering substantial development potential

Main Bedrooms: 3 generously sized bedrooms

Additional Bedrooms: 2 extra bedrooms for guests, office space, or other uses

Bathrooms: Adequate bathrooms to serve all bedrooms and living areas

Living Spaces: Spacious living and dining areas, ideal for family gatherings and entertaining

Plot Size: Large 789 m² plot providing ample outdoor space for gardening, leisure activities, or future development

Parking: Sufficient space for parking multiple vehicles

Emba Village: Located in a picturesque and peaceful village setting with easy access to Paphos city center and local

Additional information

Facilities

Aircondition, Split system

Solar water heater

Features

Easy access to main roads

Investment opportunity

Quiet area

Distances

Amenities

 800 m

Airport

 19 km


Schools

 1.5 km

Contact us



Stavroula Michail

 (+357) 99810880

 stavroulamichail.lextrus@gmail.com