



#7269

Own a Slice of Paradise: Luxurious 3 Bedroom Beachfront Villa in Pervolia, Cyprus! (7269)

📍 Pervolia, Larnaca





€2,440,000 +VAT





Overview

Specifications

Bedrooms		Bathrooms		Covered	
 3		 2		 160 m ²	
Type	Detached Villa				
Showers	1				
Toilets	3				
Plot	634 m ²				
Status	Under construction				
Year of construction	2024				
Furnished	Unfurnished				
Structure	Concrete				
Facade	Concrete				
Energy efficiency rating	 A				

Description

Own a Slice of Paradise: Luxurious 3 Bedroom Beachfront Villa in Pervolia, Cyprus! (7269)

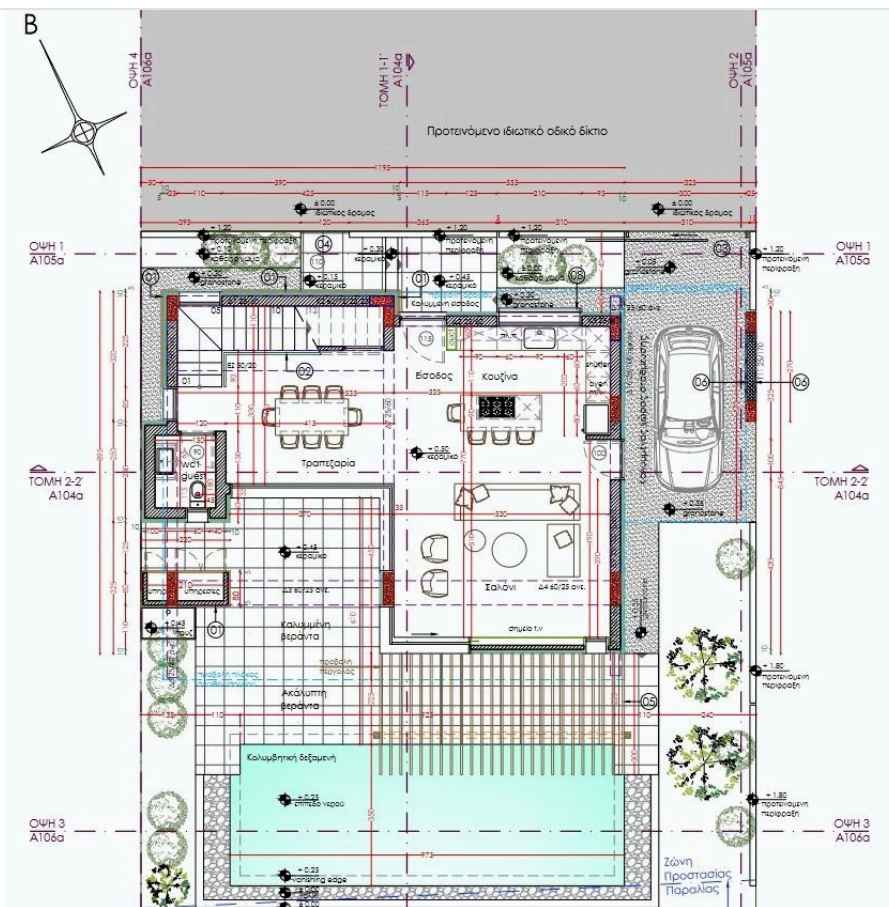
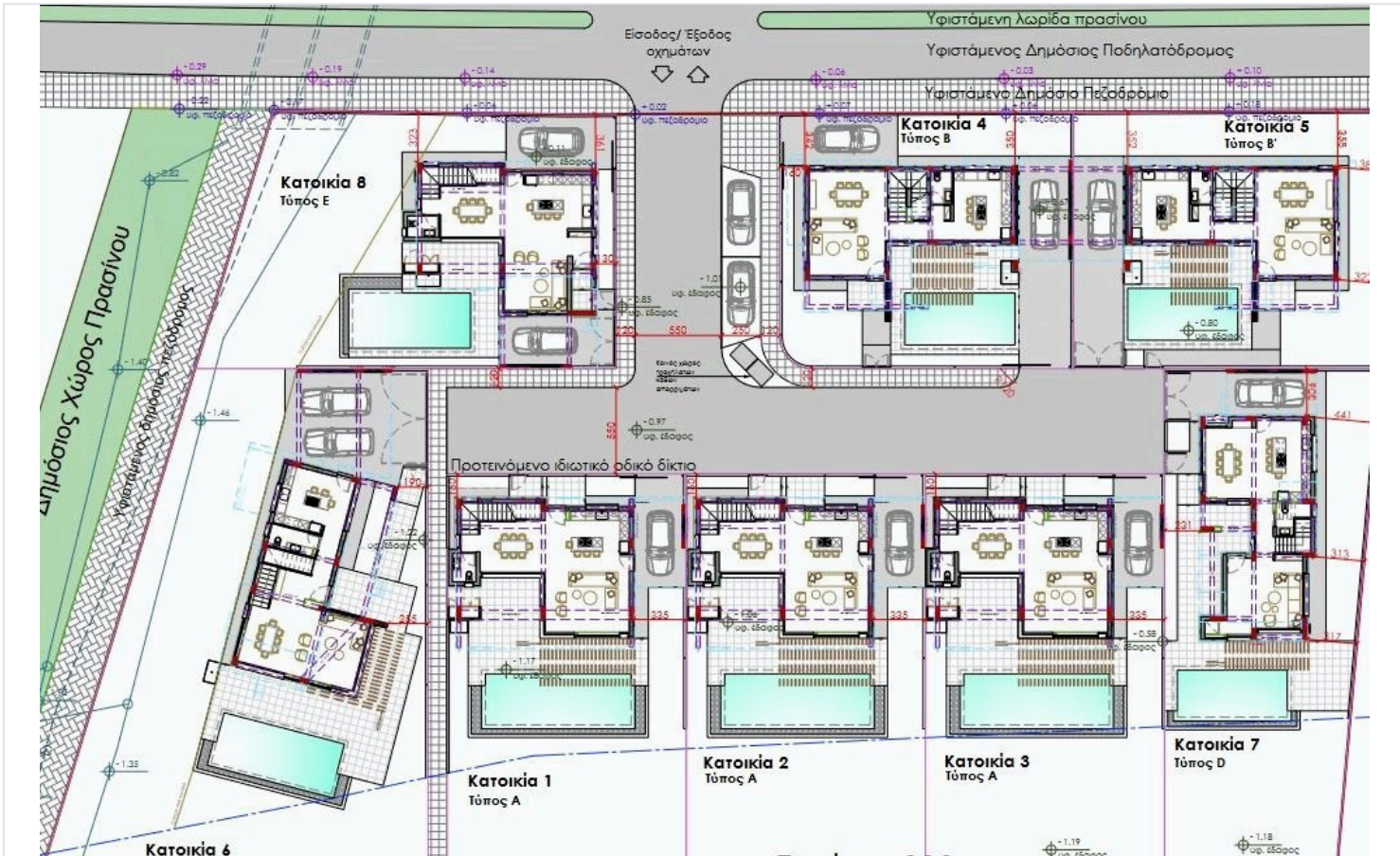
Step into a world of refined luxury with this immaculate three-bedroom villa, perfectly poised on the sun-kissed shores of Pervolia, Cyprus. Every corner of this stunning retreat exudes elegance and sophistication, offering unrivaled panoramic views of the azure Mediterranean Sea.

Features That Define Luxury:

- Exclusive Location: Nestled directly on the beach, offering immediate access to the sea.
- Architectural Excellence: Meticulously crafted with attention to every detail, blending modern design with coastal charm.
- Spacious Interiors: Sprawling living areas bathed in natural light, complemented by high ceilings and premium finishes.
- Gourmet Kitchen: State-of-the-art kitchen equipped with sleek granite countertops and top-of-the-line appliances.
- Master Suite Sanctuary: A private haven featuring an opulent en suite bathroom and serene sea vistas.
- Outdoor Oasis: Immerse yourself in a private paradise with a sparkling pool, landscaped gardens, and multiple verandas for al fresco dining and relaxation.
- Roof Garden Retreat: Elevated terrace offering panoramic views, perfect for entertaining under the stars.



Floor plans



Additional information

Facilities

Aircondition, Provision

Outdoor shower

Solar water heater

Heating, Provision

Parking, Covered

Storage

Landscaped garden

Pool, Private

Features

Balcony

Bath

Easy access to highway

Garden

Guest WC

Open plan

Sea view

Veranda

Veranda, large

Balcony, front

Bright

Easy access to main roads

Garden, large

Internal stairs

Roof garden

Shower

Veranda, back

Walking distance to beach

Barbeque

Double glazing

En suite shower

Granite countertops

Investment opportunity

Sea front

Thermal insulation

Veranda, front

Distances

Amenities

 700 m

Airport

 7.5 km

Sea

 10 m

Public transport

 1 km

Schools

 2 km


Resort

 2 km

Contact us



Stefania Spyridou

 (+357) 99810880

 stephaniaspyridou@gmail.com

