



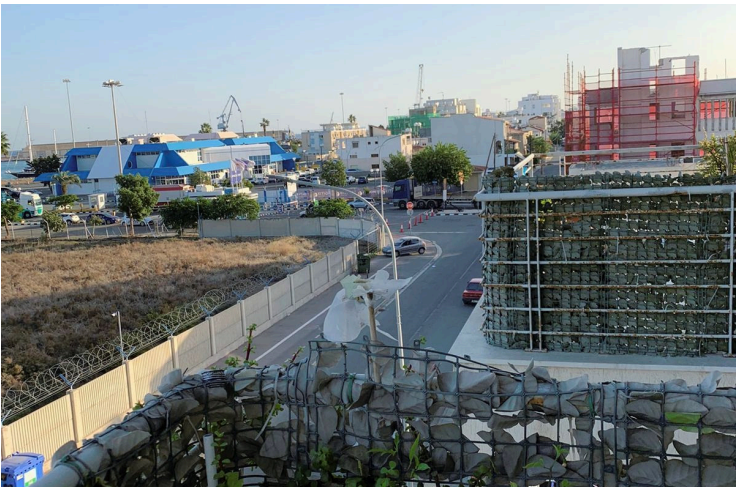
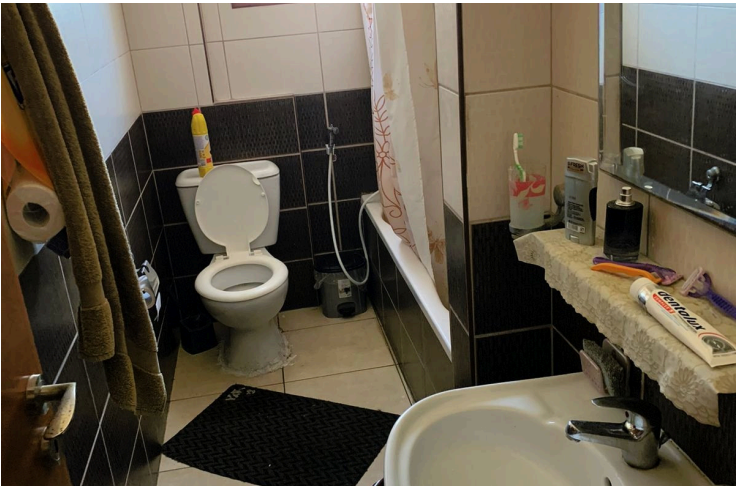
#7257

2-Bedroom Apartment in Larnaca Port Area (7257)

📍 Port, Larnaca





€280,000





Overview

Specifications

Bedrooms		Bathrooms		Covered	
 2		 1		 79 m ²	
Type		Apartment			
Toilets		1			
Status		Resale			
Year of construction		2008			
Title deed		Yes			
Furnished		Unfurnished			
Structure		Concrete			
Facade		Concrete			
Communal charge frequency		Monthly			
Energy efficiency rating		 B			

Description

2-Bedroom Apartment in Larnaca Port Area (7257)

Discover this bright and spacious 2-bedroom apartment located in the sought-after Larnaca Port area. This 3rd-floor gem offers a contemporary living experience with features like storage room & covered parking. Built in 2008, the apartment boasts an energy efficiency rating of B, ensuring comfortable and cost-effective living. With a covered area of 79 m² and an additional 22 m² veranda.

This apartment's prime location is a significant highlight, with all essential amenities just 200 meters away. Public transport options are conveniently located 300 meters from your doorstep, and the beautiful Larnaca sea is a short 900-meter walk. Families will appreciate the proximity to schools only 800 meters away, while the nearby resort (1.2 km) and airport (8 km) add to the convenience and appeal of this property.

Whether you're seeking a new home or a valuable investment opportunity, this move-in ready apartment ticks all the boxes. The modern design, combined with practical features like a solar water heater, ceramic tiles, and double glazing, ensures a high-quality living experience. Don't miss out on this exceptional property – contact us today to schedule a viewing!

Additional information

Facilities

Aircondition, Split system

Heating, Split system

Parking, Covered

Solar water heater

Storage

Features

Balcony

Bright

Ceramic tiles

Double glazing

Easy access to main roads

Investment opportunity

Near amenities

Rental potential

Distances

Amenities



200 m

Airport



8 km

Sea



900 m

Public transport



300 m

Schools



800 m

Resort




1.2 km

Contact us



Stefania Spyridou

 (+357) 99810880

 stephaniaSpyridou@gmail.com