



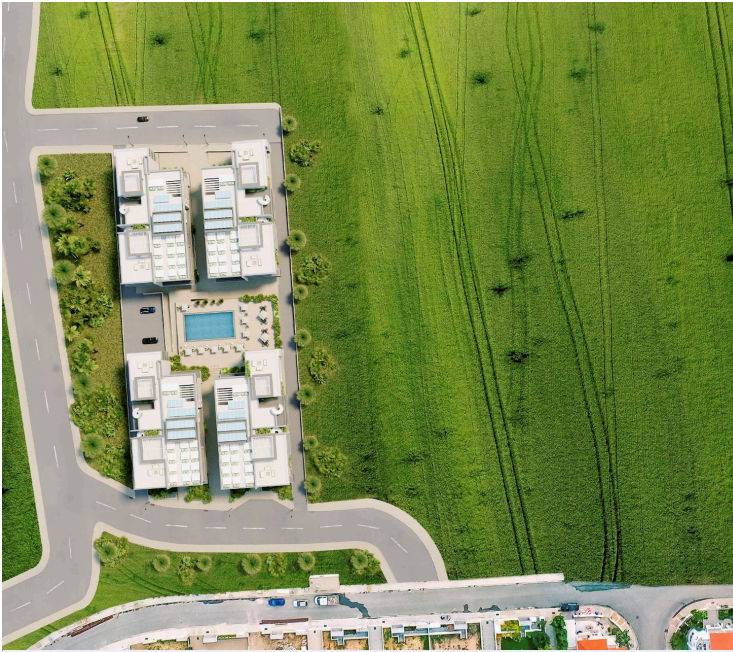
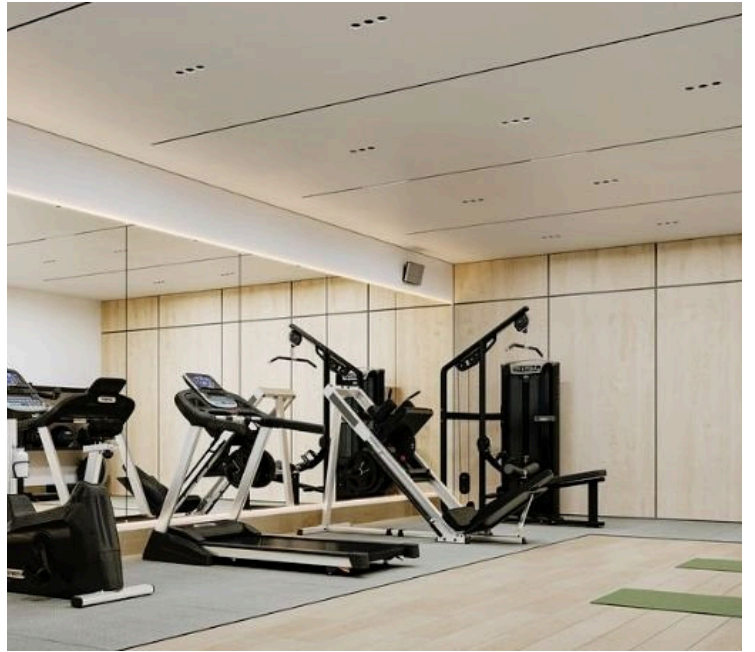
#7206

Modern 2-Bedroom Apartment in Livadia, Larnaca (7206)

📍 Livadia, Larnaca

€216,000 +VAT





Overview

Specifications

Bedrooms

 2

Bathrooms

 2

Covered

 90 m²

Type	Apartment
Toilets	2
Covered veranda	20 m²
Status	Under construction
Year of construction	2025

Furnished	Unfurnished
Structure	Concrete
Facade	Concrete
Communal charge frequency	Monthly
Energy efficiency rating	 A

Description

Modern 2-Bedroom Apartment in Livadia, Larnaca (7206)

Price: €213,000 + VAT

Move-in Ready: END OF 2025

This stunning 2-bedroom apartment is part of the exclusive Palma de Fiore complex in the desirable Livadia area of Larnaca. Designed with modern living in mind, this under-construction apartment offers high-quality finishes and a wealth of amenities, making it an ideal investment opportunity or a perfect home.

Open-Plan Layout: Spacious living room and dining area with decorative false ceilings.

Modern Kitchen: Equipped with soft-closing cabinets and granite counters.

Private Storage: Convenient storage room for extra space.

Wardrobes: Floor-to-ceiling wardrobes providing ample storage.

Security: Security entrance phone for added safety.

Solar Panels: Water heating system with solar panels.

Water Pressure System: Ensures consistent water flow.

Smart Home Provisions: Ready for smart home integration.

Air Conditioning: Concealed A/C units provision.

Heating: Provision for heating system.

Private Roof Garden: Enjoy outdoor space with privacy.

Parquet Option: Elegant flooring option available.

Floor plans

FLOORPLANS 1-BEDROOM APARTMENT

PROPERTY DETAILS

Total covered area (sq.m)	77
Living area (sq.m)	51
Covered verandas (sq.m)	12
Utility areas (sq.m)	14
Bedroom(s)	1
Bathroom(s)	1
Covered parking spaces	1



FLOORPLANS 2-BEDROOM APARTMENT

PROPERTY DETAILS

Total covered area (sq.m)	110
Living area (sq.m)	76
Covered verandas (sq.m)	20
Uncovered verandas (sq.m)	7
Utility areas (sq.m)	14
Bedroom(s)	2
Bathroom(s)	2
Covered parking spaces	1



Additional information

Facilities

Aircondition, Provision

Gym

Pool, Communal

Elevator

Heating, Provision

Solar water heater

Gated complex

Parking, Covered

Storage

Features

Bright

Easy access to highway

Entrance gate, automated

Open plan

Thermal insulation

Cul de sac

Easy access to main roads

Granite countertops

Rental potential

Veranda

Double glazing

Entrance gate

Investment opportunity

Shower

Distances

Amenities

 700 m

Airport

 10 km

Sea

 1.3 km

Public transport

 750 m


Schools

 900 m

Contact us



Stavroula Michail

 (+357) 99810880

 stavroulamichail.lextrus@gmail.com