



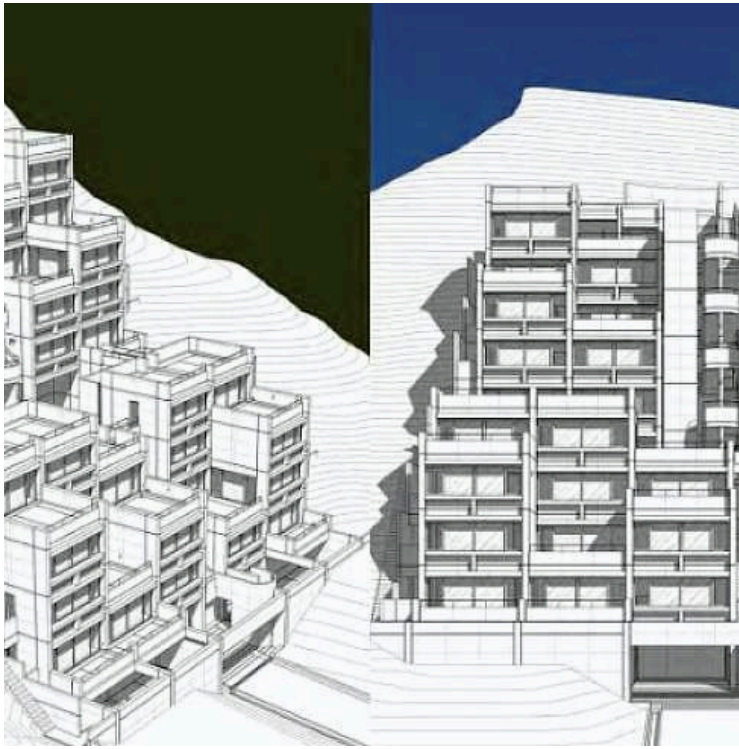
#6849

# Captivating Hillside Plot with Panoramic Views in Oroclini, Larnaca (6849)

📍 Oroklini, Larnaca

€1,400,000





# Overview

## Specifications

Area		2760 m <sup>2</sup>	
Type	Building Plot	Title deed	Yes

## Description

Captivating Hillside Plot with Panoramic Views in Oroclini, Larnaca (6849)

Embrace the allure of this picturesque plot of land, nestled on a hillside in the charming village of Oroclini, Larnaca. Offering breathtaking views of the surrounding valley and the azure sea beyond, this property presents a unique and enticing opportunity for development.

Spanning a generous surface land area of 2,760 square meters, this plot provides ample space for the realization of a visionary residential project. With a building density of 60% and a coverage of 35%, there is the potential to create stunning apartment buildings that capitalize on the panoramic vistas, offering residents an unparalleled living experience.

For those intrigued by the possibilities, conceptual plans by architects are available without license, providing a glimpse into the potential transformation of this stunning location into a desirable residential enclave. Imagine waking up to the gentle caress of the morning sun and savoring breathtaking sunsets from the comfort of your own home.

Whether you're a developer seeking a prime investment opportunity or an individual looking to build your dream residence, this hillside plot offers endless potential. Create an idyllic retreat where modern living meets natural beauty, offering residents a harmonious blend of serenity and sophistication.

Priced at €1,400,000, this plot represents a rare chance to secure a piece of paradise in one of Larnaca's most sought-after locations. Seize this opportunity to make your mark on the landscape and elevate the art of living to new heights.

Contact us today to learn more about this captivating hillside plot and embark on a journey towards realizing your vision of luxury living in Oroclini, Larnaca.



# Additional information

## Features

Easy access to highway

Easy access to main roads

Investment opportunity

Near amenities

## Distances

Amenities



1 km

Airport



21 km

Sea



2 km

Schools




750 m

## Contact us



**Stefania Spyridou**

 (+357) 99810880

 stephaniaSpyridou@gmail.com

