



#6562

Luxury Apartments in Potamos Germasogeia, Limassol (6562)

📍 Germasogeia Tourist Area, Limassol





€390,500 +VAT





Overview

Specifications

Bedrooms		Bathrooms		Covered	
 1		 1		 50 m ²	
Type	Apartment				
Toilets	1				
Status	Under construction				
Year of construction	2025				
Furnished	Unfurnished				
Structure	Concrete				
Facade	Concrete				
Communal charge frequency	Monthly				
Energy efficiency rating	 A				

Description

Luxury Apartments in Potamos Germasogeia, Limassol (6562)

Price: €390,500 + VAT | Completion August 2025|

Location: Potamos Germasogeia, Limassol

Apartment Specifications:

Type: 1-bedroom apartment | 3rd Floor | 700 M From The Beach
Internal covered area: 50 sq.m
Covered veranda area:12.0 sq.m
Common areas area: 4.1 sq.m

This new modern complex is meticulously designed for coastal living, offering the perfect blend of style, comfort, and convenience for a Mediterranean lifestyle in an urban setting.

Key Features:

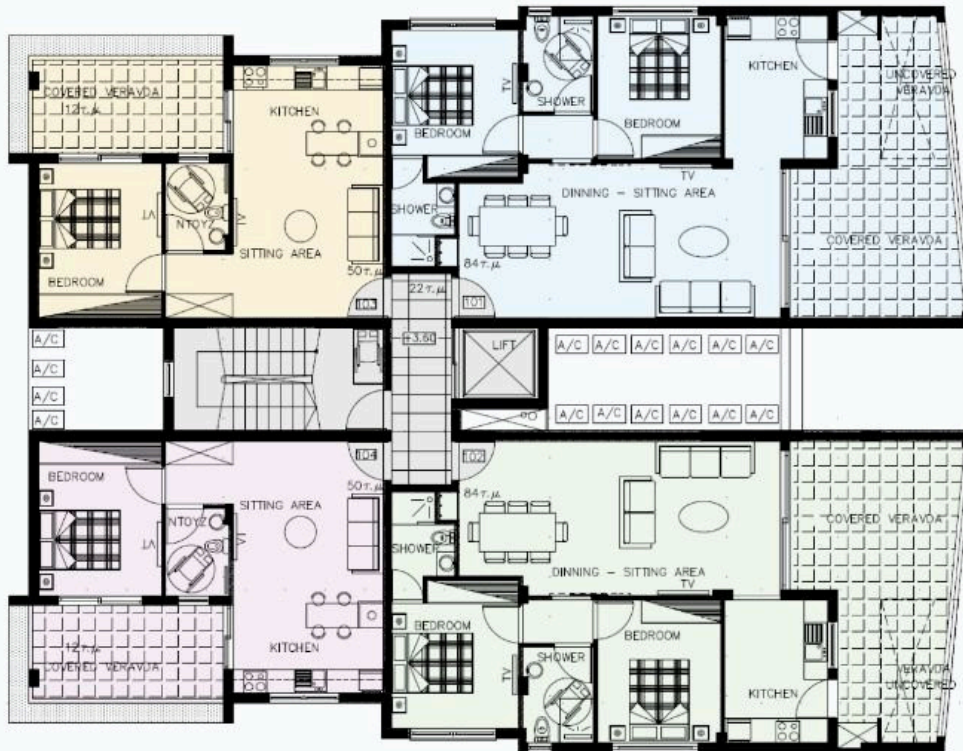
Located in the most sought-after part of Limassol - Potamos Germasogeia.
Close proximity to shops, supermarkets, pharmacies, cafes, restaurants, and Dasoudi beach with a eucalyptus alley.
Control entry and CCTV system for security.
14 spacious apartments in total.



Floor plans



1 floor



Additional information

Facilities

Aircondition, Provision

Heating, Underfloor

Solar water heater

Elevator

Parking, Covered

Storage

Gated complex

Solar photovoltaic panels (provision)

Features

Bright

Double glazing

En suite shower

Fitted wardrobes

Kitchen appliances

Open plan

Shower

Walking distance to beach

Ceramic tiles

Easy access to highway

Entrance gate

Granite countertops

Near amenities

Parquet flooring

Thermal insulation

Combined kitchen and dining area

Easy access to main roads

Entrance gate, automated

High ceilings

Near bus route

Pressurized water system

Veranda

Distances

Amenities



300 m

Airport



55 km

Sea



700 m

Public transport



200 m

Schools



1 km

Resort



700 m

Contact us



Stefania Spyridou

📞 (+357) 99810880

✉️ stephaniaspyridou@gmail.com

