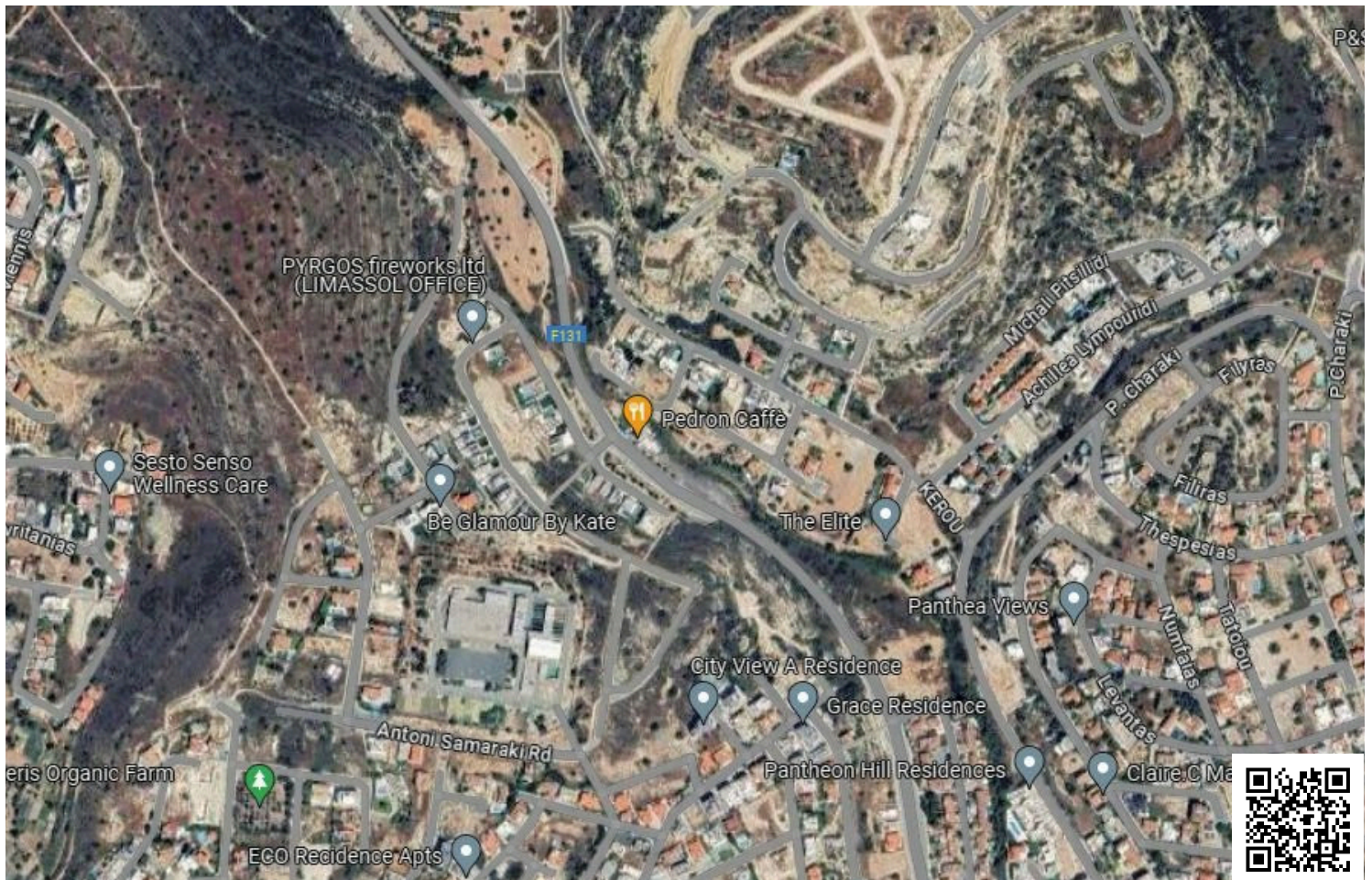


#6527

? Prime Land Plot in Mesa Geitonia, Limassol ? (6527)

📍 Mesa Geitonia, Limassol

€422,000



Overview

Specifications

Area		973 m ²	
Type	Building Plot	Title deed	Yes

Description

? Prime Land Plot in Mesa Geitonia, Limassol ? (6527)

PRICE EUR422.000

Seize the opportunity to invest in this exceptional land plot located in the sought-after area of Mesa Geitonia in Limassol. Perfect for residential development or investment purposes, this plot offers ample space and potential for a variety of projects.

This generous land plot spans an impressive 973 square meters and is situated in accordance with the Local Plan of Limassol. Designated within Zone Kα9, which is characterized by residential areas, the plot allows for a building density of 40% and coverage of 25%. With the possibility of constructing up to 2 floors with a maximum height of 10 meters, the potential for development is substantial.

Key Attributes:

- Area: 973 m²
- Category: Land Plot
- Development Plan: Local Plan of Limassol
- Zone: Kα9
- Zone Description: Residential Areas
- Building Density: 40%
- Coverage: 25%
- Floors: 2
- Height: 10 meters
- Access Type: Registered Road
- Relationship to Road: Corner/Privileged



Additional information

Features

Connected to electric mains

Easy access to main roads

Near amenities

Village view

Corner

Investment opportunity

Own water supply

Water well

Country view

Municipal water/sewage

Quiet area

Distances

Amenities



700 m

Airport



60 km

Schools



1.5 km


Planning zones

Zone	Cover factor	Build factor	Max height	Max floors	Affected percentage
Ka9	25%	40%	10 m	2	-

Contact us



Stefania Spyridou

 (+357) 99810880

 stephaniaspyridou@gmail.com

