



#6466

? Luxe Living at Souni Limassol - Elegant 3-Bedroom Villas ?(6466)

📍 Souni, Limassol





€410,000 +VAT





Overview

Specifications

Bedrooms		Bathrooms		Covered	
 3		 2		 105 m ²	
Type		Detached Villa			
Toilets		3			
Plot		363 m ²			
Status		Off plan			
Year of construction		2026			
Furnished		Unfurnished			
Structure		Concrete			
Facade		Concrete			
Energy efficiency rating		 A			

Description

? Luxe Living at Souni Limassol - Elegant 3-Bedroom Villas ?(6466)

@EUR 410.000 +VAT

Step into a world of opulence with our exclusive residential development on the outskirts of Limassol. Experience the epitome of luxury in our stunning 3-bedroom villas, meticulously designed to offer unrivaled comfort and sophistication.

Property Details:

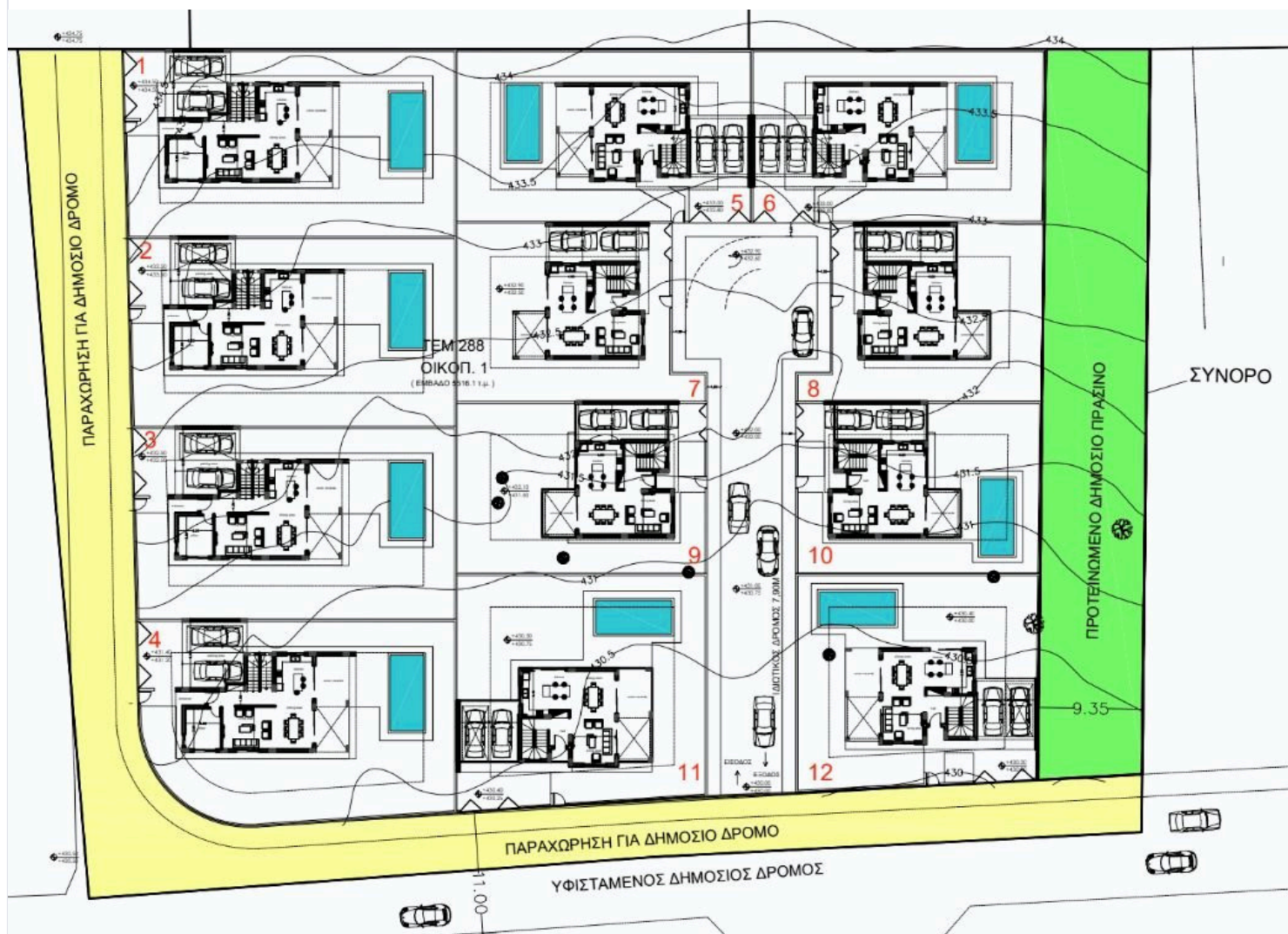
- Covered Area: 105 m2
- Covered Veranda: 15 m2
- Plot Size: 363 m2

Key Features & Amenities:

- Underfloor Central Heating
- Custom Designed Kitchens & Wardrobes
- Granite Worktops
- Fully Landscaped Garden Areas
- Pressurized Water System
- Pipe-in-Pipe Plumbing System



Floor plans



Additional information

Facilities

Aircondition, Provision

Parking, Covered

Solar water heater

Gated complex

Pool, Optional

Storage

Heating, Provision

Solar photovoltaic panels (provision)

Features

Balcony

Central TV system

Country view

Easy access to main roads

Entrance gate, automated

Garden, large

Internal stairs

Mountain view

Pressurized water system

Shower

Veranda

Bath

Central satellite system

Double glazing

En suite shower

Fitted wardrobes

Granite countertops

Luxury specifications

Near amenities

Quiet area

Spacious rooms

Veranda, large

Bright

Central sound system

Easy access to highway

Entrance gate

Garden

Guest WC

Modern design

Open plan

Roof garden

Thermal insulation

Village view

Distances

Amenities



580 m

Sea



16 km

Contact us



Stefania Spyridou

☎ (+357) 99810880

✉ stephaniaspyridou@gmail.com

