

#6392

# ? Supreme Luxury Villa with Panoramic Sea Views (6392)

📍 Pegeia, Paphos





€2,450,000 +VAT





# Overview

## Specifications

Bedrooms		Bathrooms		Covered	
 5		 4		 355 m <sup>2</sup>	
Type	Detached Villa				
Toilets	4				
Plot	3000 m <sup>2</sup>				
Status	Under construction				
Year of construction	2026				
Furnished	Optional furnished				
Structure	Concrete				
Facade	Concrete				
Energy efficiency rating	 A				

## Description

? Supreme Luxury Villa with Panoramic Sea Views (6392)

PRICE 2.450.000 +VAT

A Supreme Luxury Villa located in the tranquil area of Sea Caves in Peyia which is near to the National Park of Akamas & Center of Coral Bay which provides a plethora of amenities such as shops, supermarkets, banks, restaurants, coffee shops, bakeries, schools and anything that can also be found in the city center of Paphos. The Villa is also only 2 minutes away from the famous beach of Coral Bay.

? Prime Location:

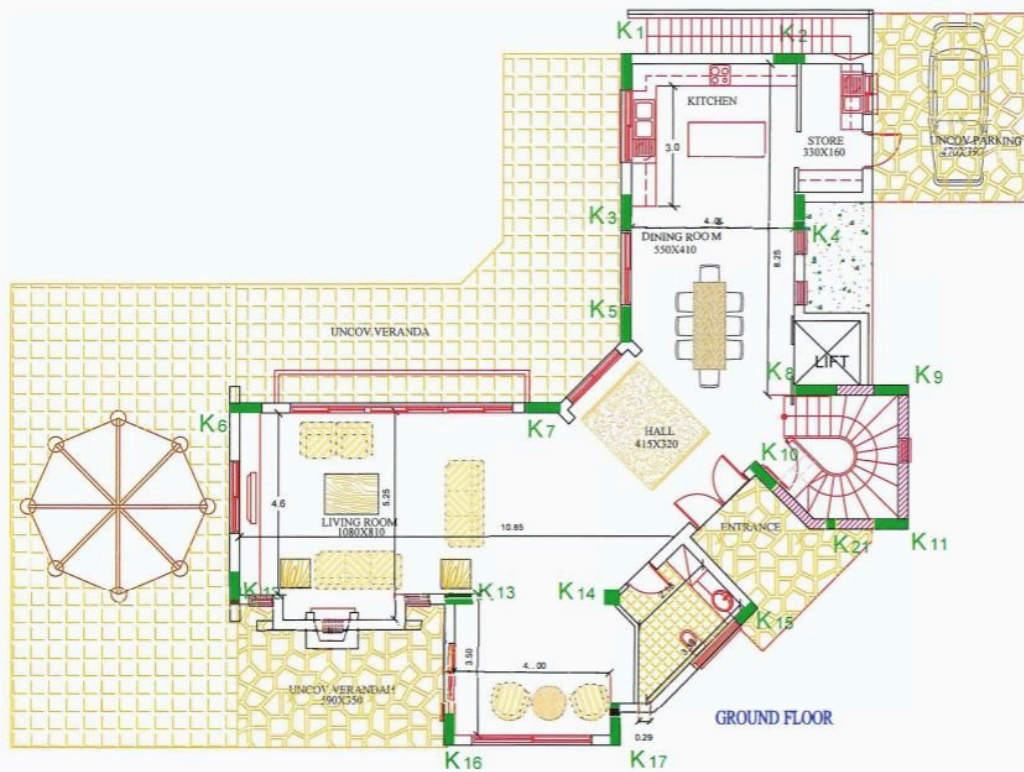
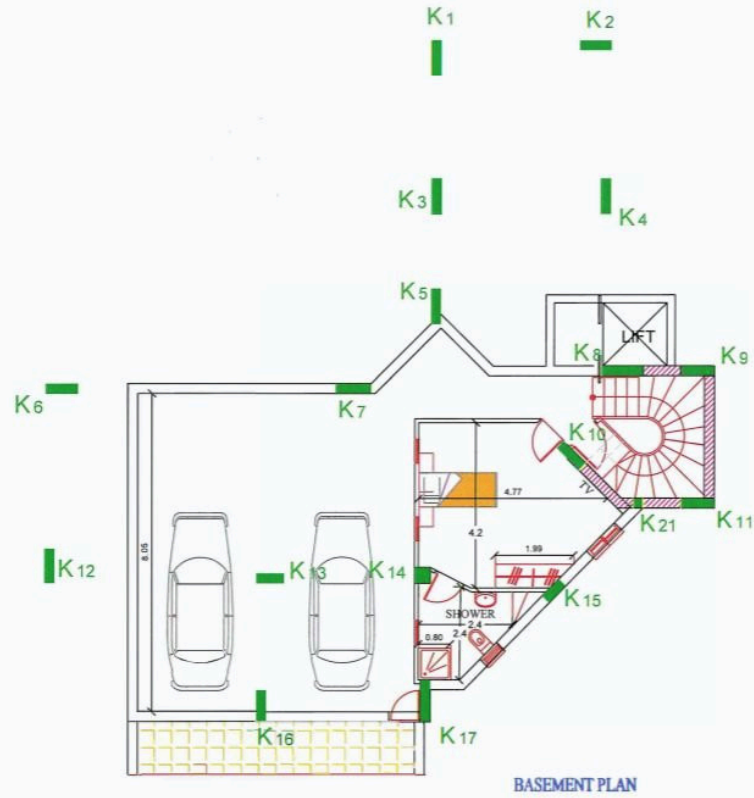
- Situated in the tranquil area of Sea Caves in Peyia
- Close proximity to the National Park of Akamas & Center of Coral Bay
- Easy access to a plethora of amenities including shops, supermarkets, banks, restaurants, and schools
- Only 2 minutes away from the famous beach of Coral Bay

?? Key Features:

- Elevator servicing all floors and the roof garden
- Gated access ensuring security and privacy
- Luxurious marble swimming pool (10m x 5m) for ultimate relaxation



# Floor plans



# Additional information

## Facilities

Aircondition, Provision

Parking, Covered

Solar photovoltaic panels  
(provision)

Elevator

Pergola

Solar water heater

Heating, Underfloor

Pool, Private

Storage

## Features

Barbeque

Ceiling fans

Easy access to main roads

Garden, large

High ceilings

Open plan

Smart home automation

Veranda

Bath

Ceramic tiles

En suite shower

Granite countertops

Marble flooring

Roof garden

Spacious rooms

Bright

Double glazing

Garden

Ground floor bedroom

Marble stairs

Shower

Thermal insulation

## Distances

Amenities



1.5 km

Airport



25 km

Sea



700 m

## Contact us



**Stefania Spyridou**

📞 (+357) 99810880

✉️ [stephaniaspyridou@gmail.com](mailto:stephaniaspyridou@gmail.com)

