



#6369

2 Bedroom Apartment in Zakaki Limassol (6369)

📍 Zakaki, Limassol





€325,000 +VAT





Overview

Specifications

Bedrooms		Bathrooms		Covered	
 2		 2		 82 m ²	
Type		Apartment			
Toilets		2			
Covered veranda		22.8 m ²			
Status		Off plan			
Year of construction		2025			
Furnished		Unfurnished			
Structure		Concrete			
Facade		Concrete			
Communal charge frequency		Monthly			
Energy efficiency rating		 A			

Description

2 Bedroom Apartment in Zakaki Limassol (6369)

PRICE 325.000 +VAT

Nestled in Limassol’s sought-after Zakaki neighborhood in Cyprus, this property epitomizes modern convenience and luxurious living with its meticulously designed 2-bedroom apartments. The building, strategically located in the desirable Casino and Mall area, provides residents easy access to shopping, dining, and entertainment.

Its top-quality construction and materials ensure durability, reflected in high rental prices, making it a lucrative investment opportunity. The prime location, superior construction, and overall appeal also position it as an excellent choice for future resale. Whether seeking a rental investment or a well-designed apartment in Cyprus’s sought-after neighborhood, this property is the perfect choice.

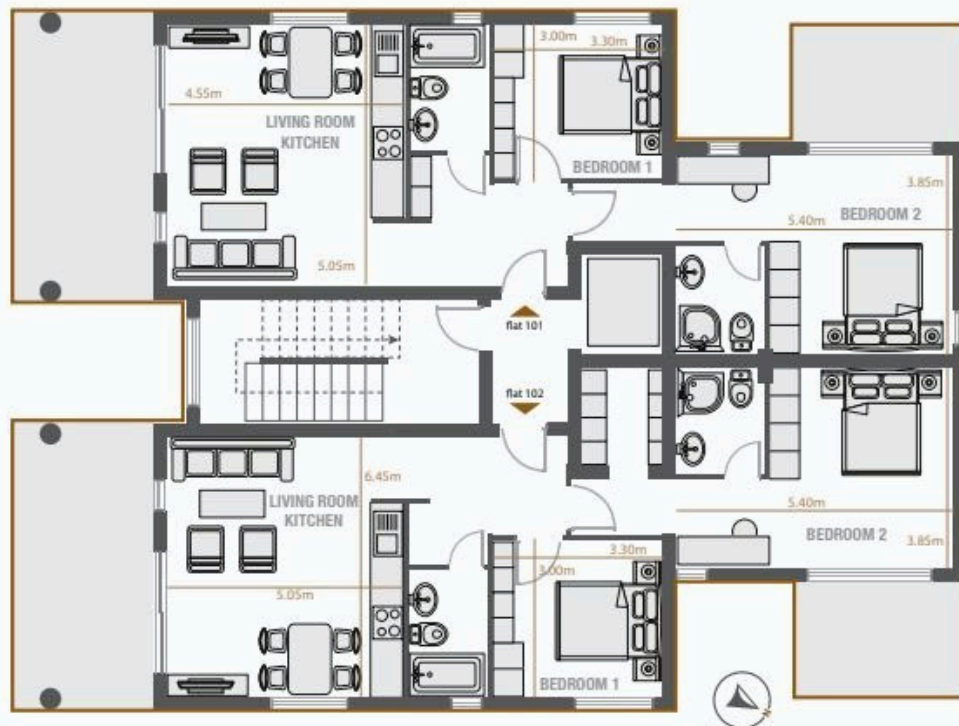
2 Bedrooms | 2 Bathrooms | Open Plan Apartment | Near All Amenities with easy access to main roads

Move in Ready : End of 2025

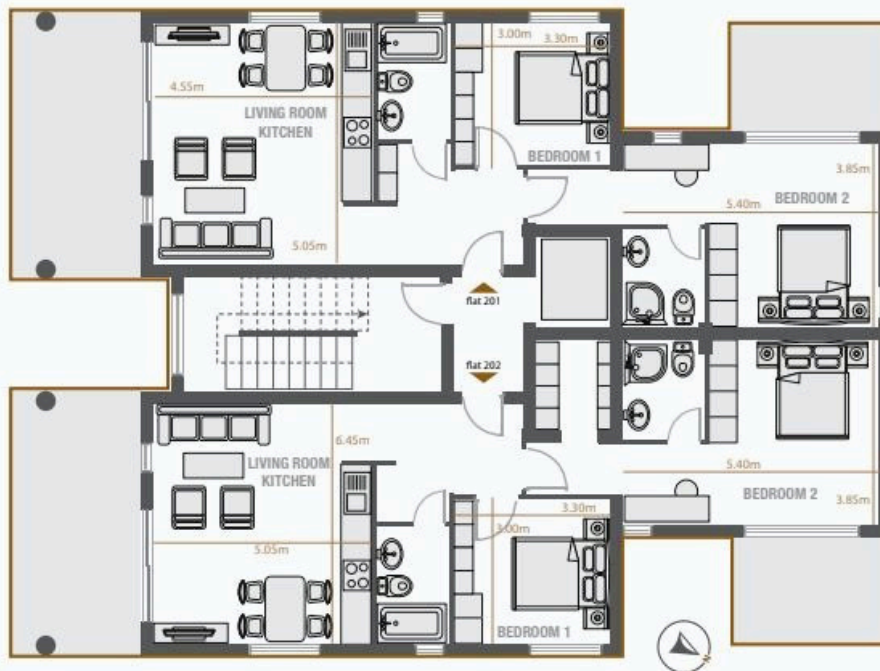


Floor plans

1st Floor



2nd Floor



Additional information

Facilities

Aircondition, Provision

Parking, Covered

Elevator

Solar water heater

Heating, Provision

Storage

Features

Balcony

Ceramic tiles

Easy access to highway

Entrance gate, automated

Open plan

Thermal insulation

Bright

City view

Easy access to main roads

Granite countertops

Rental potential

Veranda

Central sound system

Double glazing

Entrance gate

Investment opportunity

Sound insulation

Contact us



Stavroula Michail

☎ (+357) 99810880

✉ stavroulamichail.lextrus@gmail.com

