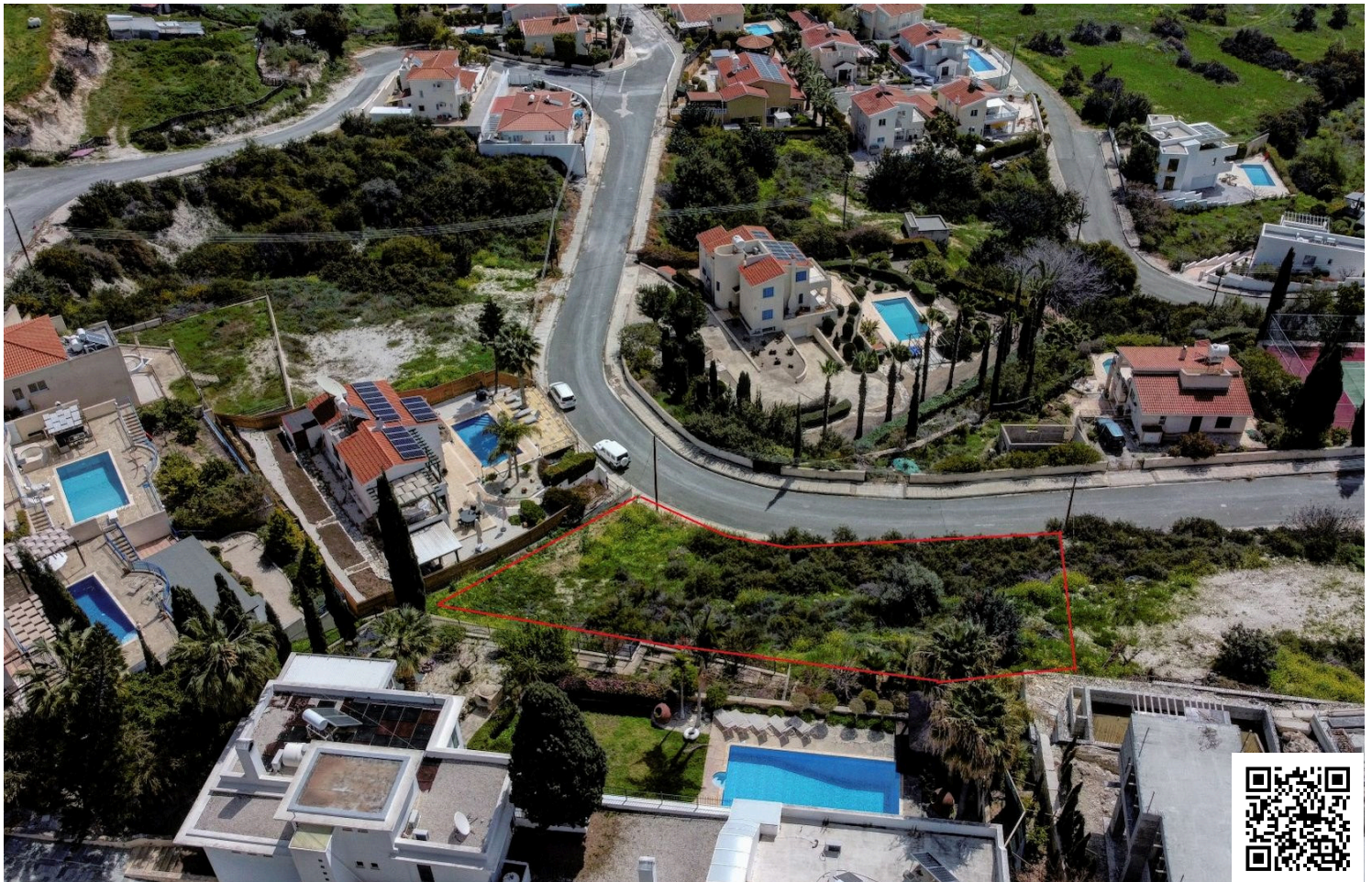


#6305

Residential Plot of 1,100m² at Peyia, Paphos (6305)

 Pegeia, Paphos

€231,000 +VAT



Overview

Specifications

Area		1100 m ²	
Type	Building Plot	Title deed	Yes

Description

Residential Plot of 1,100m2 at Peyia, Paphos (6305)

PRICE 231.000 +VAT

The asset has an abrupt bent towards south-east and in certain points has a higher altitude than the street and offers partial distance sea view.

The property lies within Planning Zone H5 with maximum building ratio of 30%, coverage ratio 20% on two floors and maximum height of 8,30m. The property is covered by the utility services (electricity, water and telecommunication).

Access Type: Registered Road

Road Relationship: Corner/Privileged

Road Level Relationship: Road Lower

Shape: Regular

View: Privileged

Environment: Adjacent to Pedestrian Walkway

This plot of land offers exceptional access via a registered road and holds a privileged corner position, making it highly desirable. Situated on a road lower level, the plot features a regular shape and boasts a privileged view. Additionally, it adjoins a pedestrian walkway, enhancing its environmental appeal.



Additional information

Features

Connected to electric mains

Corner

Panoramic view

Quiet area

Sea view

Planning zones

Zone	Cover factor	Build factor	Max height	Max floors	Affected percentage
H5	20%	30%	8.3 m	2	-

Contact us



Stefania Spyridou

☎ (+357) 99810880

✉ stephaniaspyridou@gmail.com

