



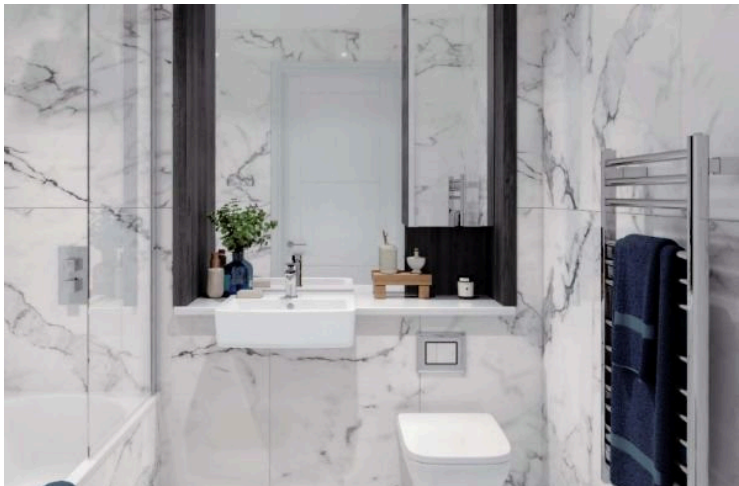
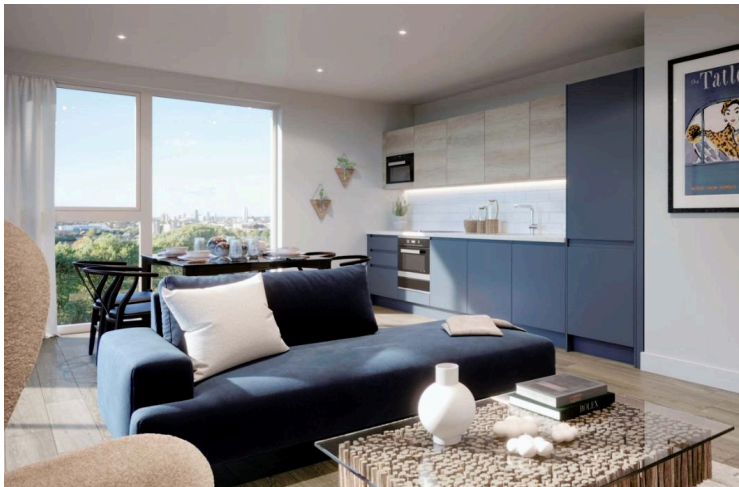
#6289

1 Bedroom Apartment in Deptford London (6289)

📍 Deptford, London, England





€410,000





Overview

Specifications

Bedrooms		Bathrooms		Covered	
 1		 1		 47.9 m ²	
Type	Apartment				
Toilets	1				
Uncovered veranda	60 m ²				
Status	Under construction				
Year of construction	2023				
Furnished	Unfurnished				
Structure	Concrete				
Facade	Concrete				
Communal charge frequency	Monthly				
Energy efficiency rating	 A				

Description

1 Bedroom Apartment in Deptford London (6289)

PRICE 410.000

Nestled within the up-and-coming SE8 postcode. Building on the success of our previously sold-out Seagar Distillery development, we are excited to contribute to the ongoing regeneration of Deptford. With 176 private apartments offering one, two, and three-bedroom lateral options, as well as one and two-bedroom duplex apartments, residences are anticipated to be in high demand. Each home is designed with a private balcony or terrace, and selected elevated units offer breathtaking panoramic views of the skyline.

This innovative mixed-use project is planned with modern amenities, and a dedicated concierge service. The development incorporates an expansive public realm, offering residents private access to communal gardens with dedicated play areas for our younger residents, and beautifully landscaped courtyards. Positioned directly opposite the development to the north is Deptford Park, while to the south lies Folkestone Gardens, providing residents with ample serene parkland at their doorstep for leisure and enjoyment.

Features

- One-year service charge holiday*
- Fully-furnished free of charge*
- New mixed-use development
- Central podium garden and landscaped courtyards



Additional information

Facilities

Aircondition, Split system

Elevator

Gated complex

Heating, Underfloor

Solar water heater

Features

Bright

Easy access to main roads

Granite countertops

Near amenities

Open plan

Veranda

Distances

Amenities



750 m

Schools



3.5 km

Contact us



Stavroula Michail

☎ (+357) 99810880

✉ stavroulamichail.lextrus@gmail.com

