



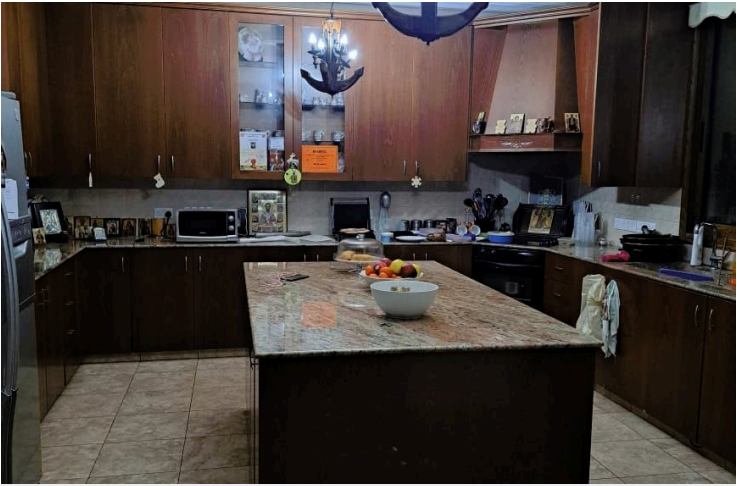
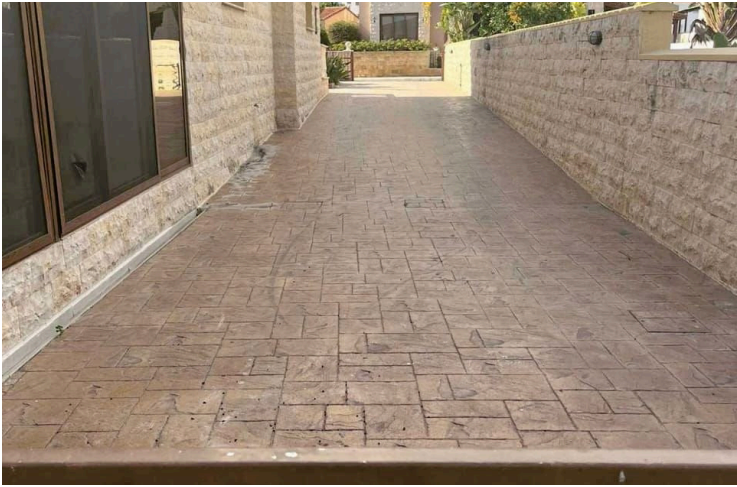
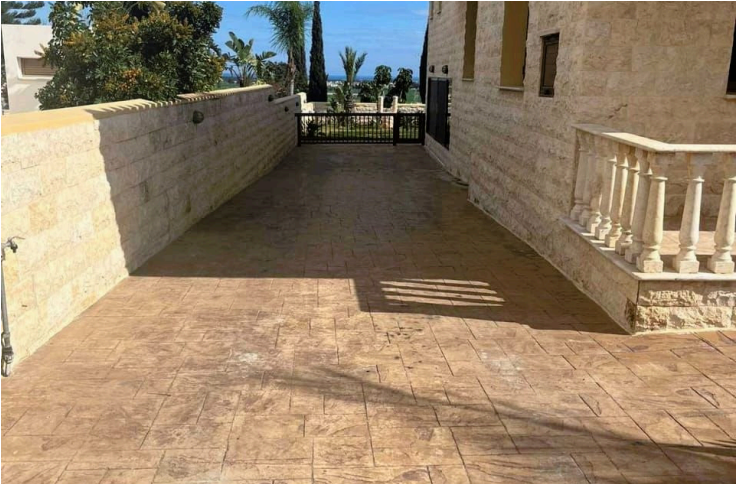
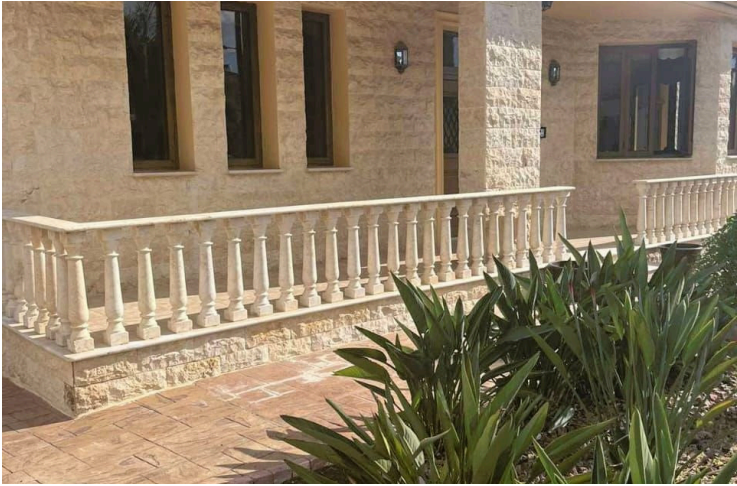
#6073

Beautiful House with Spacious Garden in Tersefanou, Larnaca (6073)

📍 Tersefanou, Larnaca





€420,000





Overview

Specifications

Bedrooms		Bathrooms		Covered	
 4		 3		 400 m ²	
Type	House	Title deed	Yes		
Toilets	3	Furnished	Unfurnished		
Plot	1100 m ²	Structure	Concrete		
Status	Resale	Facade	Concrete		
Year of construction	2006	Energy efficiency rating	 A		

Description

Beautiful House with Spacious Garden in Tersefanou, Larnaca (6073)

Price: €475.000

Two adjacent plots totaling 1100 square meters

Covered Area: 400 square meters

Year Built: 2006

Unfurnished

4 Bedrooms / 3 Bathrooms

This stunning house nestled in the serene area of Tersefanou in Larnaca offers a perfect blend of comfort, style, and tranquility. Situated on two spacious plots totaling 1100 square meters, this property boasts ample outdoor space, including a beautiful and expansive garden, ideal for relaxation and outdoor activities.

Interior Features:

Basement, Ground Floor, and First Floor layout

Basement: Includes a kitchen, shower room, toilet, sink, storage space, and playroom

Ground Floor: Features a spacious kitchen, living room, dining area, shower room, toilet, sink, and fireplace

First Floor: Consists of two bedrooms with a shared bathroom, toilet, and sink, followed by two steps leading to the master bedroom. The master bedroom is generously sized with built-in closets and an ensuite bathroom with a shower, toilet, and sink.



Additional information

Facilities

Aircondition, Split system

Parking, Covered

Storage

Heating, Central

Pergola

Landscaped garden

Solar water heater

Features

Balcony

Bright

Courtyard

Easy access to main roads

Garden

Guest WC

Kitchen appliances

Play room

Veranda

Walk-in closet

Barbeque

Ceramic tiles

Double glazing

En suite shower

Garden, large

Indoor fireplace

Modern design

Quiet area

Veranda, large

Bath

Country view

Easy access to highway

Entrance gate

Granite countertops

Internal stairs

Open plan

Shower

Village view

Distances

Amenities



700 m

Airport



8.7 km

Sea



6 km

Public transport



3.9 km

Schools



1.5 km

Contact us



Stavroula Michail

 (+357) 99810880

 stavroulamichail.lextrus@gmail.com

