



#5086

LUXURIOUS SEAFRONT VILLA IN LIMASSOL MARINA (5086)

📍 Limassol Marina, Limassol

€3,900,000





Overview

Specifications

Bedrooms

 3


Bathrooms

 2

Covered

 138 m²

| | |
|---------|--------------------------|
| Type | Detached Villa |
| Showers | 2 |
| Toilets | 2 |
| Plot | 229 m² |
| Status | Key ready |

| | |
|--------------------------|--|
| Year of construction | 2023 |
| Furnished | Unfurnished |
| Structure | Concrete |
| Facade | Concrete |
| Energy efficiency rating |  A |

Description

LUXURIOUS SEAFRONT VILLA IN LIMASSOL MARINA (5086)

@3,900,000 EUR (+127.300 VAT on mooring fees)

BEDROOMS: 3

COVERED INTERNAL AREA: 138 M2

COVERED VERANDA: 12 M2

BASEMENT: 89 M2

UNCOVERED VERANDA: 30 M2

SUNDECK: 47 M2

TOTAL COVERED AREA: 239 M2

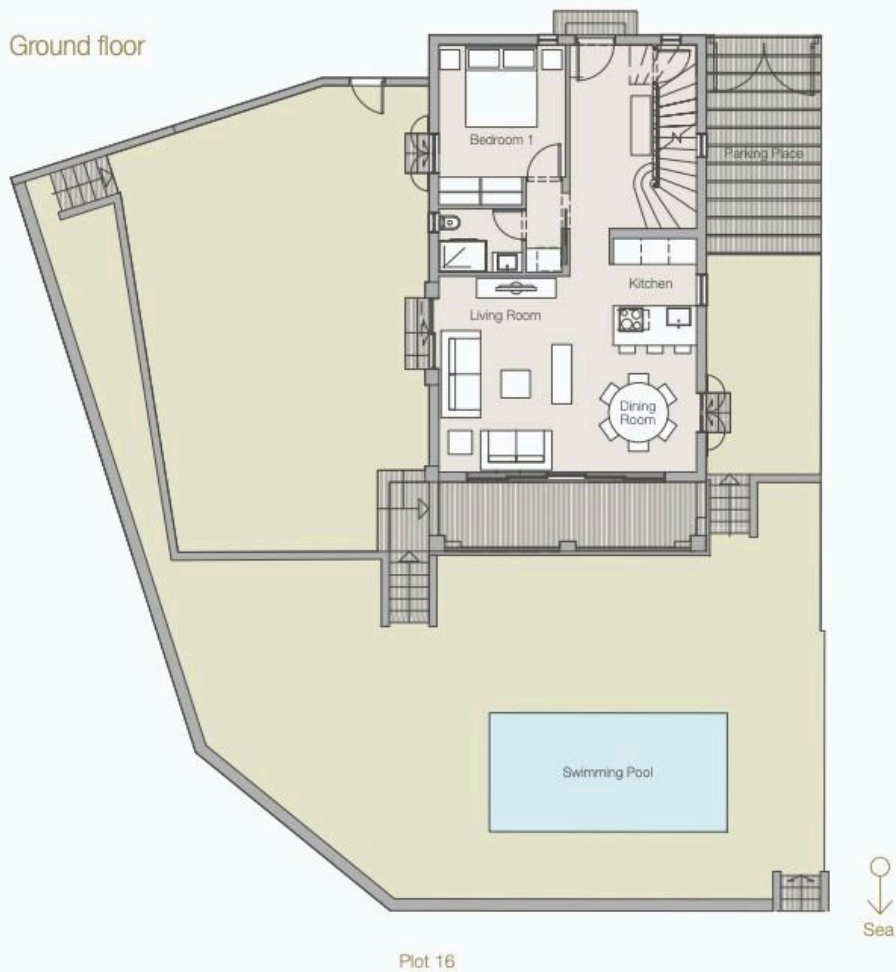
STATUS: Ready for immediate delivery

The VILLA range draws on local architectural styles to achieve its elemental impact. The outdoor magic of Mediterranean life is reflected in a variety of exterior features, including the roof terrace and flowered pergola.

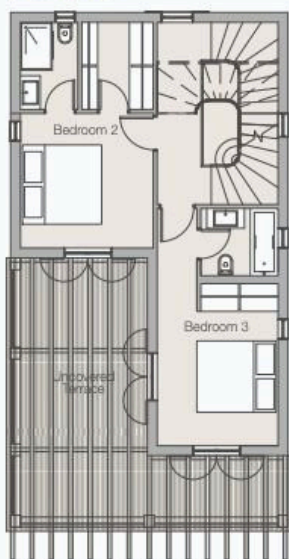
Enjoy living on the sea in an exclusive luxury villa with unobstructed views of the Mediterranean and the Marina. With the thrill of the city just moments away, you can relax in a beautiful setting, complete with your own private garden and swimming pool. Drive up to one door and sail away from another just moments away from the beach.



Floor plans



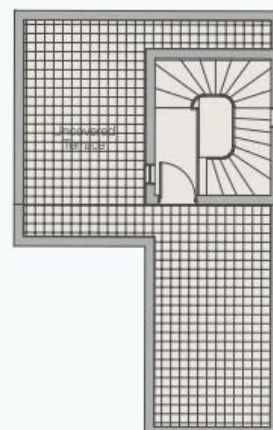
First floor



Lower ground floor



Roof Terrace



Additional information

Facilities

Aircondition, Provision

Landscaped garden

Solar water heater

Heating, Underfloor

Parking, Covered

Storage

Indoor pool, Private

Pool, Private

Features

Alarm system (provision)

Ceramic tiles

Garden

Luxury specifications

Near amenities

Rental potential

Thermal insulation

Bath

Double glazing

High ceilings

Marble flooring

Near bus route

Sea front

Veranda

Bright

Easy access to main roads

Investment opportunity

Modern design

Pressurized water system

Sea view

Walking distance to beach

Distances

Amenities

 300 m

Airport

 72 km

Sea

 100 m

Schools

 2.7 km

Contact us



Karisse Lantin

 (+357) 97908980

 stavroulamichael1977@gmail.com

