

#4279

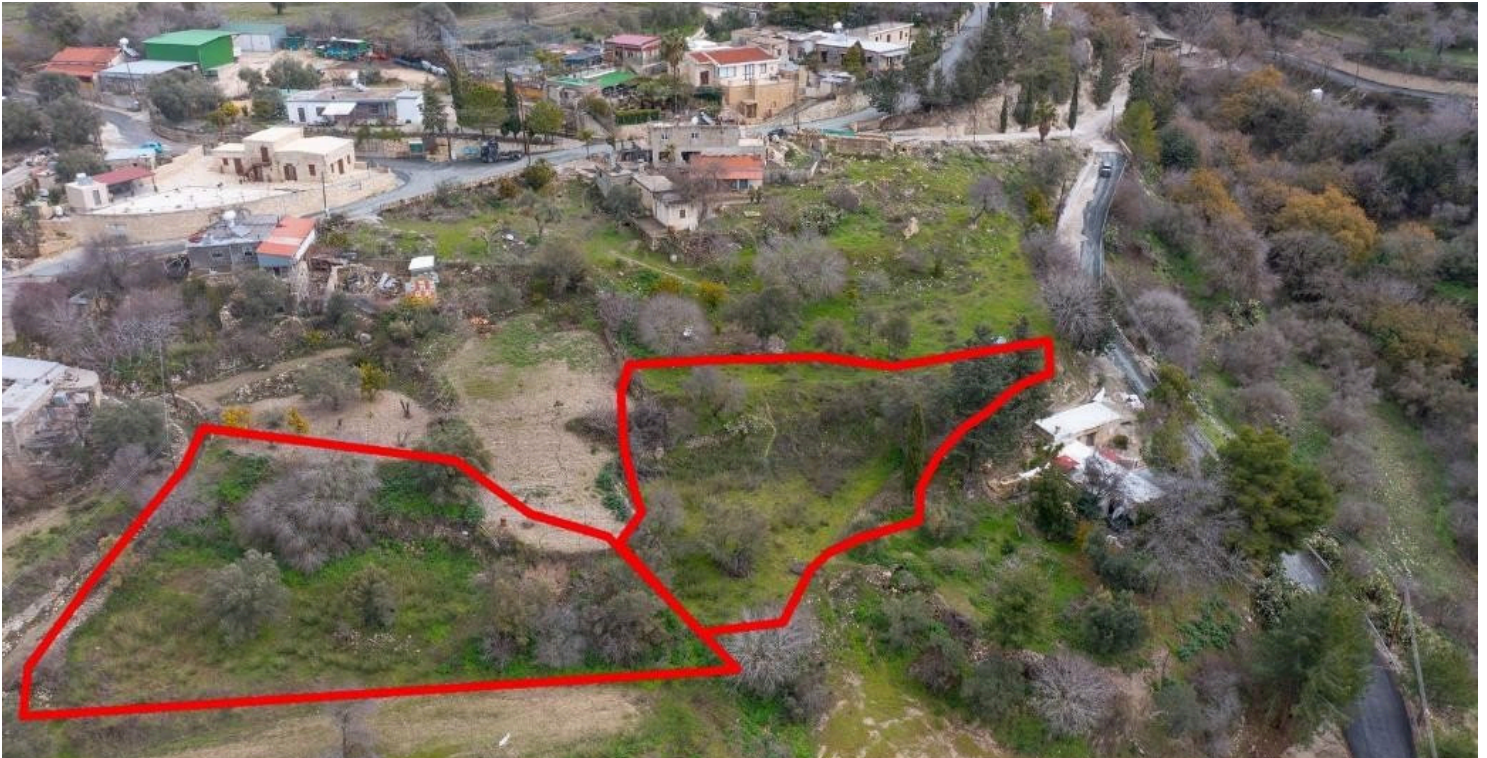
# Residential fields in Drymou, Paphos

 Drymou, Paphos

€46,000







# Overview

## Specifications

Area

 2544 m<sup>2</sup>

Type	Field
------	-------

## Description

The asset consists of two continuous residential fields in Drymou. It is located 50m from the village center and 65m from the main road Drymou-Lasa. As unified the field abuts onto a registered dirt road with a total frontage of 50m. The asset has a total area of 2,544sqm.



# | Additional information

## Planning zones

Zone	Cover factor	Build factor	Max height	Max floors	Affected percentage
-	50%	90%	-	-	-

## Contact us



**Stavroula Michail**  
☎ (+357) 99810880  
✉ stavroulamichail.lextrus@gmail.com

