

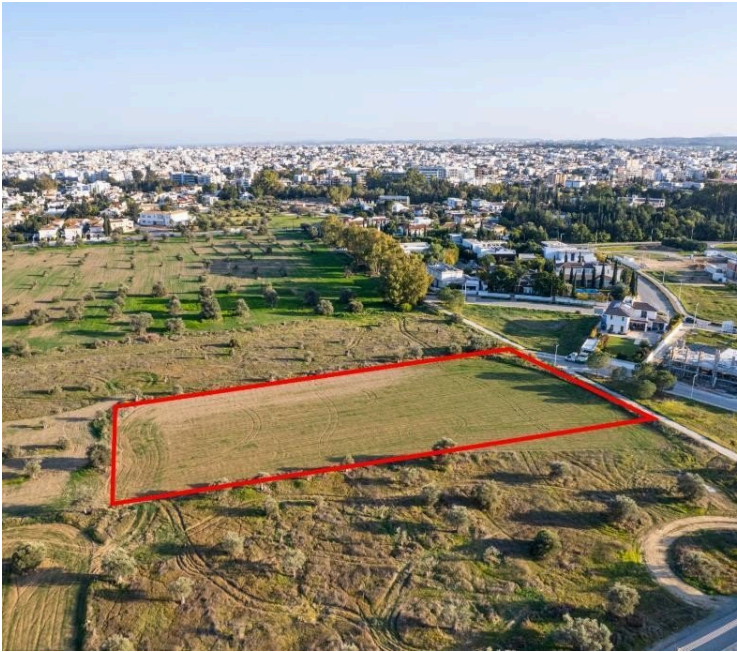
#4090

# Shared residential field in Chryseleousa, Strovolos

€175,000









# Overview

## Specifications

Area

 4701 m<sup>2</sup>

Type

Building Plot

## Description

The property is a shared (12,5%) residential field in Chryseleousa, Strovolos. It is located 700m from K-Cineplex and 500m from Eleonon avenue. The field has a total area of 4,701sqm (the corresponding land area is approximately 588sqm). It abuts along its southeastern boundary with Athanasiou Sakellariou street with a frontage of 20m, while the rest of its southern boundary abuts a public registered walkway. It offers close proximity to all amenities and easy access to Nicosia's city center.



# | Additional information

## Planning zones

Zone	Cover factor	Build factor	Max height	Max floors	Affected percentage
-	35%	60%	-	-	-

## Contact us



**Stavroula Michail**  
☎ (+357) 99810880  
✉ stavroulamichail.lextrus@gmail.com

