



#3525

# 3 BEDROOM SEAVIEW PENTHOUSE IN PAREKKKLISIA LIMASSOL (3525)

📍 Parekkklisia, Limassol

€7,270,000 +VAT













# Overview

## Specifications

Bedrooms		Bathrooms		Covered	
 3		 3		 118 m <sup>2</sup>	
Type		Apartment			
Showers		1			
Toilets		1			
Status		Off plan			
Year of construction		2026			
Furnished		Unfurnished			
Structure		Concrete			
Facade		Concrete			
Energy efficiency rating		 A			

## Description

3 BEDROOM SEAVIEW PENTHOUSE IN PAREKKLISIA LIMASSOL (3525)

@7,270,000 EUR PLUS VAT

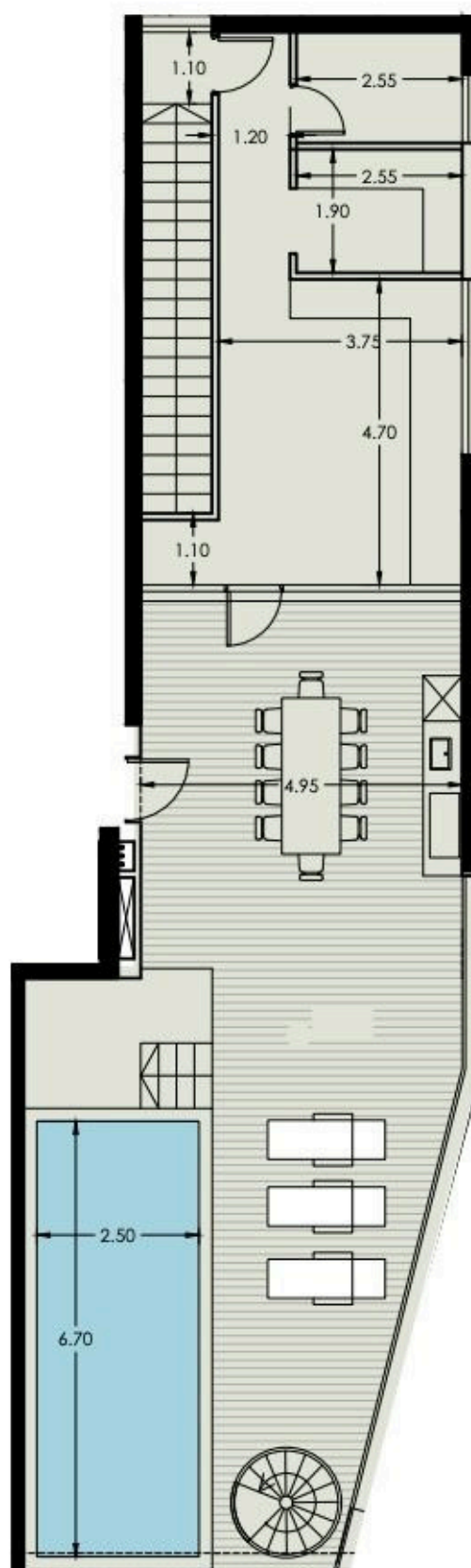
- 3 BEDROOMS
- 3 BATHROOMS
- Private Pool
- Parkings: 1
- Floor: 4th
- Communal Pool
- Indoor area: 118 m<sup>2</sup>
- Cov. veranda: 25 m<sup>2</sup>
- Basement Auxiliary: 40 m<sup>2</sup>
- Total area: 183 m<sup>2</sup>
- Stage: Planned
- Delivery: February 28, 2026

First line beachfront location  
Breathtaking unobstructed sea views  
High-end neighborhood with the best 5-star hotels



# Floor plans

Unit №	Total Area, m²
402	354.0



# Additional information

## Facilities

Aircondition, Provision

Indoor pool, Private

Sauna

Elevator

Maid's room

Heating, Provision

Parking, Covered

## Features

Bath

Easy access to highway

Near amenities

Veranda

CCTV (provision)

Easy access to main roads

Sea front

Double glazing

High ceilings

Sea view

## Distances

Amenities



750 m

Airport



66 km

Sea



900 m

Schools



5 km

## Contact us



**Karisse Lantin**

📞 (+357) 97908980

✉️ stavroulamichael1977@gmail.com

