

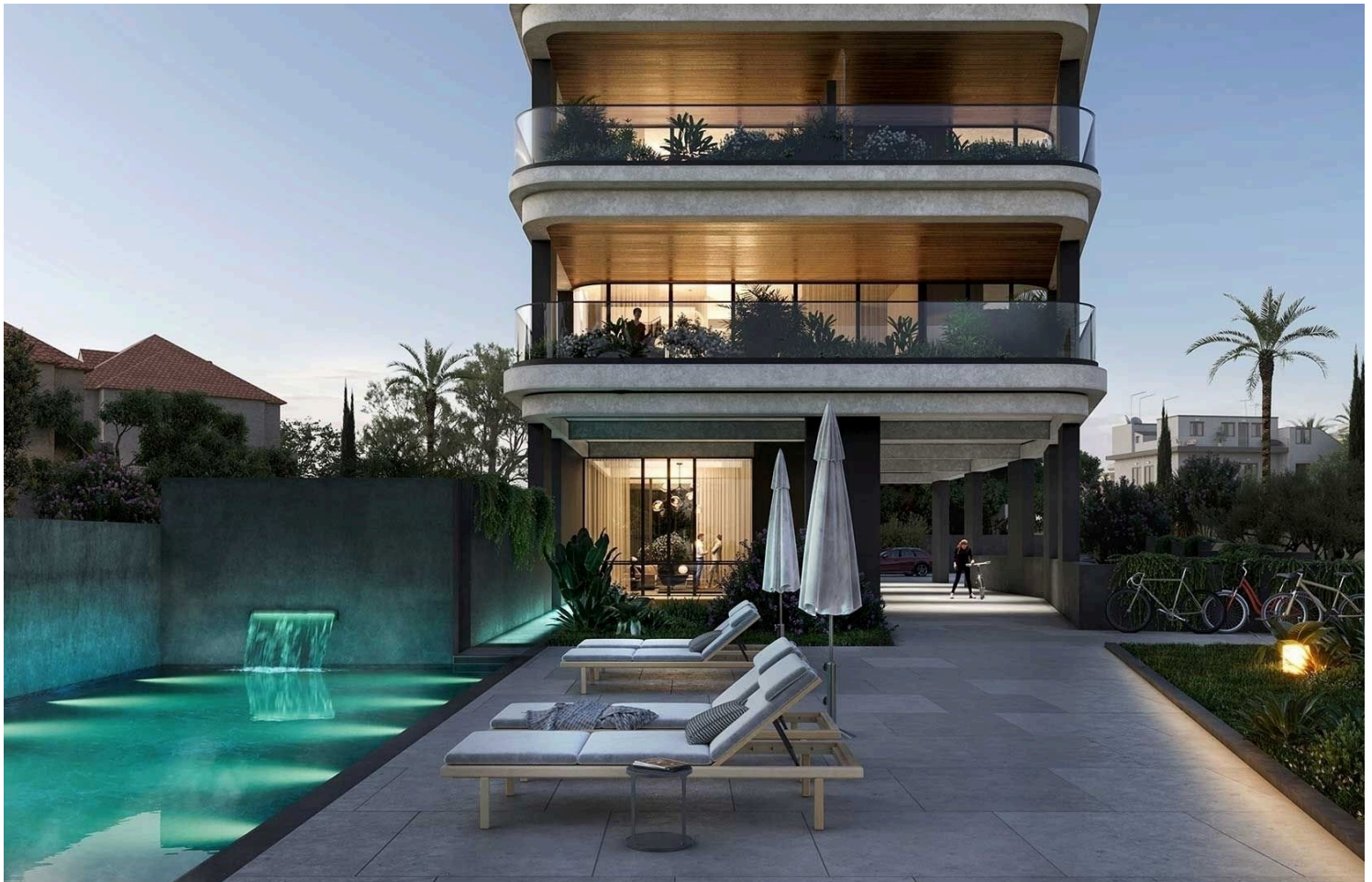


#3524

3 BEDROOM SEAVIEW PENTHOUSE IN PAREKKKLISIA LIMASSOL (3524)

📍 Parekkklisia, Limassol





€7,270,000 +VAT





Overview

Specifications

Bedrooms		Bathrooms		Covered	
 3		 3		 118 m ²	
Type		Apartment			
Showers		1			
Toilets		1			
Covered veranda		25 m ²			
Status		Off plan			
Furnished		Unfurnished			
Structure		Concrete			
Facade		Concrete			
Energy efficiency rating		 A			

Description

3 BEDROOM SEAVIEW PENTHOUSE IN PAREKKLISIA LIMASSOL (3524)

@7,270,000 EUR PLUS VAT

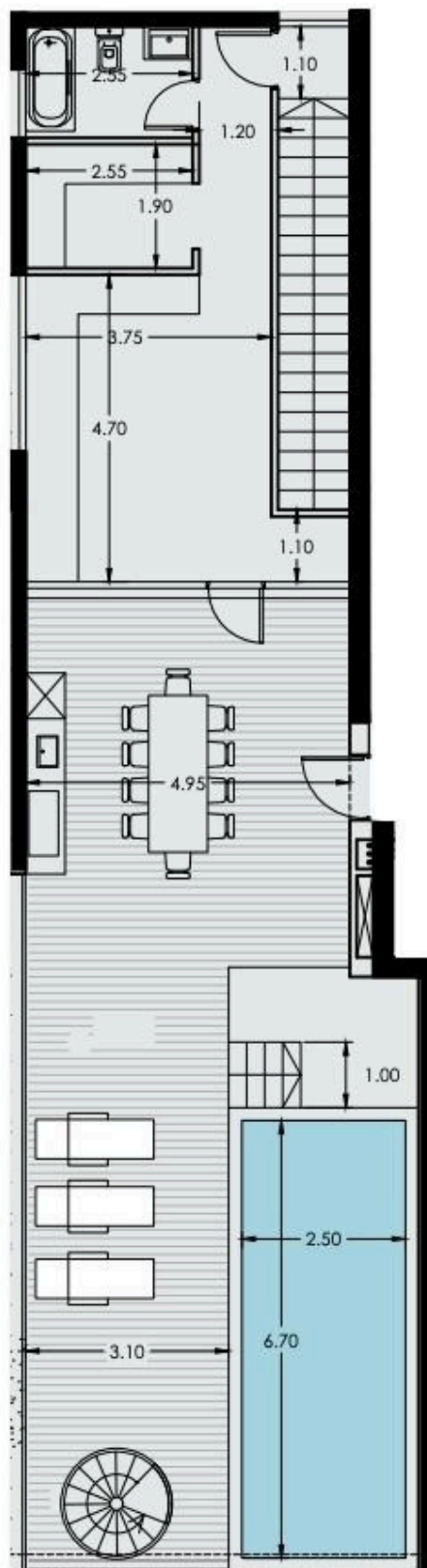
- 3 BEDROOMS
- 3 BATHROOMS
- Private Pool
- Parkings: 1
- Floor: 4th
- Communal Pool
- Indoor area: 118 m²
- Cov. veranda: 25 m²
- Basement Auxiliary: 40 m²
- Total area: 183 m²
- Stage: Planned
- Delivery: February 28, 2026

First line beachfront location
Breathtaking unobstructed sea views
High-end neighborhood with the best 5-star hotels



Floor plans

Unit №	Total Area, m ²
401	338.0



Additional information

Facilities

Aircondition, Provision

Indoor pool, Private

Sauna

Elevator

Maid's room

Heating, Provision

Parking, Covered

Features

Bath

Easy access to highway

Near amenities

Veranda

CCTV (provision)

Easy access to main roads

Sea front

Double glazing

High ceilings

Sea view

Distances

Amenities



750 m

Airport



66 km

Sea



900 m

Schools



5 km

Contact us



Stavroula Michail

☎ (+357) 99810880

✉ stavroulamichail.lextrus@gmail.com