



#3519

2 BEDROOM SEAVIEW APARTMENT IN PAREKKKLISIA LIMASSOL (3519)

 Parekkklisia, Limassol





€4,260,000 +VAT





Overview

Specifications

Bedrooms		Bathrooms		Covered	
 2		 3		 105 m ²	
Type		Apartment			
Showers		1			
Toilets		1			
Status		Under construction			
Year of construction		2027			
Furnished		Unfurnished			
Structure		Concrete			
Facade		Concrete			
Communal charge frequency		Monthly			
Energy efficiency rating		 A			

Description

2 BEDROOM SEAVIEW APARTMENT IN PAREKKKLISIA LIMASSOL (3519)

@4,260,000 EUR PLUS VAT

- 2 BEDROOMS
- 3 BATHROOMS
- Parkings: 1
- Floor: 1st
- Private Pool
- Indoor area: 105 m²
- Cov. veranda: 45 m²
- Auxiliary Area: 77 m²
- Basement Auxiliary: 40 m²
- Total area: 267 m²
- Stage: Planned
- Delivery: February 26, 2026

- First line beachfront location
- Breathtaking unobstructed sea views
- High-end neighborhood with the best 5-star hotels
- Communal swimming pool, gym and sauna

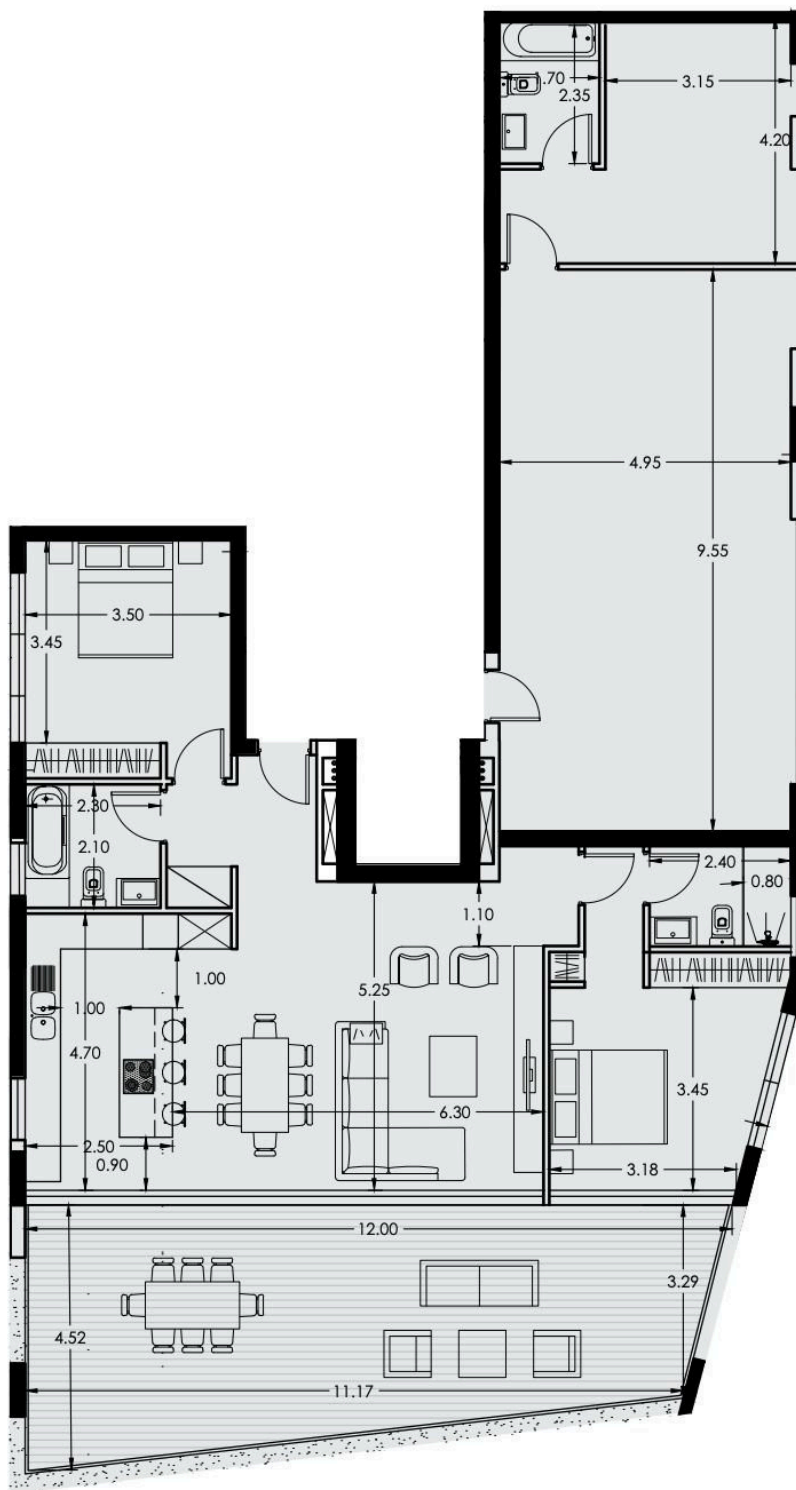


Floor plans

Unit № Total Area, m²

101

267.0



Additional information

Facilities

Aircondition, Provision

Indoor pool, Communal

Sauna

Elevator

Maid's room

Heating, Provision

Parking, Covered

Features

Bath

Easy access to highway

Near amenities

Veranda

CCTV (provision)

Easy access to main roads

Sea front

Double glazing

High ceilings

Sea view

Distances

Amenities



750 m

Airport



66 km

Sea



900 m

Schools



5 km

Contact us



Stefania Spyridou

☎ (+357) 99810880

✉ stephaniaSpyridou@gmail.com

