



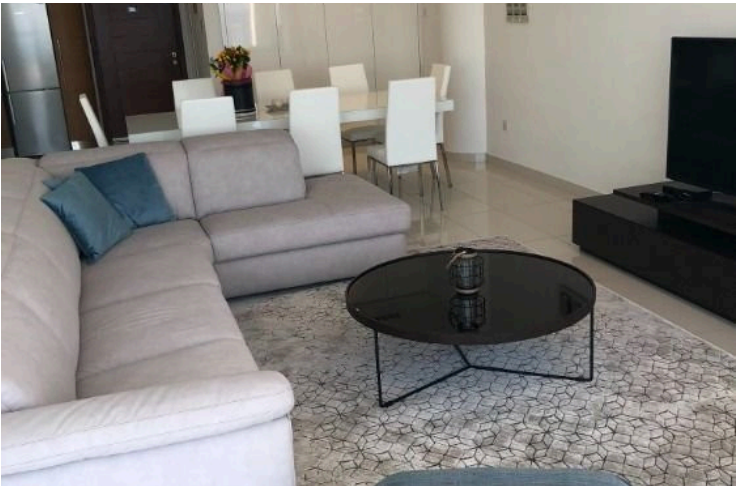
#3250

# Spectacular 3 Bedroom City Center Penthouse 400 M From Foinikoudes in Larnaca (3250)

📍 Center, Larnaca

€2,000,000





# Overview

## Specifications

Bedrooms

 **3**


Bathrooms

 **3**

Covered

 **200 m<sup>2</sup>**

Type	<b>Apartment</b>
Toilets	<b>3</b>
Status	<b>Resale</b>
Year of construction	<b>2009</b>
Title deed	<b>Final approval</b>

Furnished	<b>Fully furnished</b>
Structure	<b>Concrete</b>
Facade	<b>Concrete</b>
Communal charge frequency	<b>Monthly</b>
Energy efficiency rating	 <b>A</b>

## Description

Spectacular 3 Bedroom City Center Penthouse 400 M From Foinikoudes in Larnaca (3250)

@EUR 2.000.000 (Resale)

In the heart of Larnaca, with a wonderful view of the marina and the beach, a majestic project exist.

On the top of the building is located the most exquisite penthouse with the best view of the Mediterranean and the city.

Consisting of 3 bedrooms, 3 bathrooms, an outdoor jacuzzi and many more, is the place need to be.

The owner has asked his architect to design a modern building with all the comforts aiming to provide a luxurious and pleasant environment for the investors.

The building consists of showrooms, shops, offices one, two, and three-bedroom apartments, and two-story penthouses. All flats, offices, and penthouses have the best SEA VIEW of the Marina and the Palm Trees Beach.

Year of Construction : 2009

"The titles are in the land registry to be issued."



# Additional information


## Facilities

Aircondition, Split system	Elevator	Heating, Central
Parking, Covered	Sauna	Solar water heater
Storage		

## Features

Balcony	Bath	Bright
CCTV	Ceramic tiles	City view
Combined kitchen and dining area	Connected to electric mains	Double glazing
Easy access to main roads	En suite shower	Fitted wardrobes
Heart of city center	High ceilings	Internal stairs
Investment opportunity	Jacuzzi	Kitchen appliances
Luxury specifications	Marble flooring	Marble stairs
Modern design	Near amenities	Near bus route
Open plan	Panoramic view	Pressurized water system
Rental potential	Roof garden	Sea view
Shower	Spacious rooms	Steam bath
Thermal insulation	Veranda	Veranda, front
Veranda, large	Walking distance to beach	

## Distances

Amenities  100 m	Airport  8.4 km	Sea  400 m
Public transport  350 m	Schools  350 m	Resort  400 m



## Contact us



**Stefania Spyridou**

☎ (+357) 99810880

✉ [stephaniaspyridou@gmail.com](mailto:stephaniaspyridou@gmail.com)

