



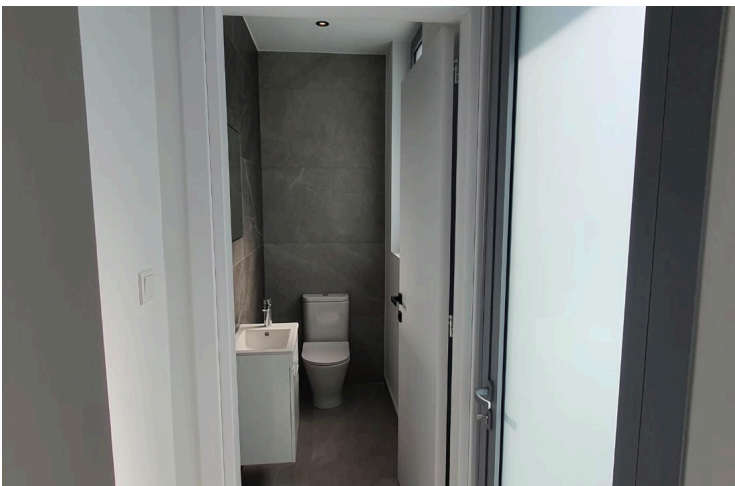
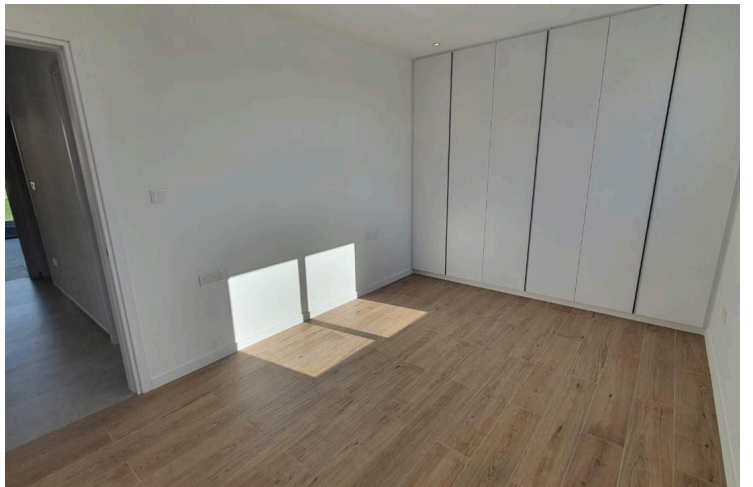
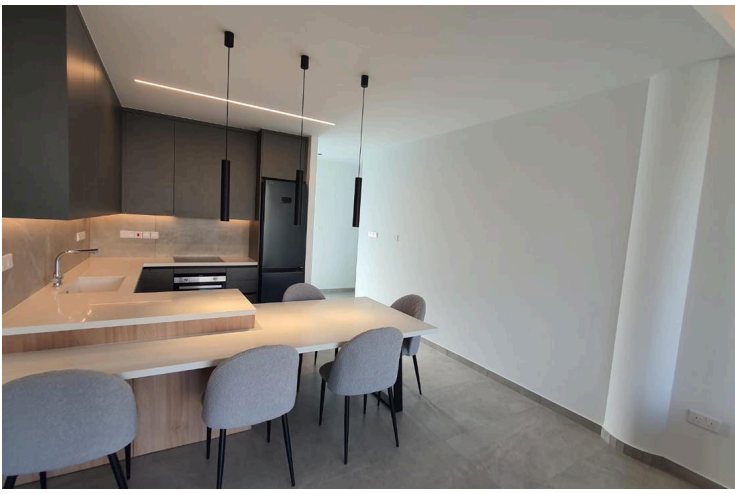
#18705

Modern Three Bedroom Apartment in Central Mesa Geitonia

📍 Mesa Geitonia, Limassol

€2,500 /month





Overview

Specifications

Bedrooms

 3


Bathrooms

 1

Covered

 92 m²

Type	Apartment
Showers	2
Toilets	3
Status	Key ready

Year of construction	2024
Furnished	Fully furnished
Energy efficiency rating	 A

Description

Brand-New Luxury 3-Bedroom Apartment in Mesa Geitonia, Limassol

Experience modern living in this stunning brand-new 3-bedroom apartment, completed in 2024 and ideally located in the sought-after area of Mesa Geitonia. Offering 92 m² of stylish living space, this fully furnished residence combines comfort, energy efficiency, and convenience.

The apartment features three spacious bedrooms, two modern bathrooms plus a guest WC, a bright open-plan living and dining area, and a contemporary fully equipped kitchen. Residents enjoy full air conditioning in all rooms, double-glazed windows, solar water heating, photovoltaic panels, and an Energy Efficiency Rating of A, ensuring lower utility costs year-round.

Additional benefits include covered private parking, a storage room, elevator access, and a spacious balcony perfect for relaxing outdoors.

Ideally situated close to schools, supermarkets, shops, cafes, business centers, and public transport, with easy access to the highway and only a short drive from Limassol's seafront and city center.

Property Features:

- * 92 m² internal area
- * 3 Bedrooms
- * 2 Bathrooms + Guest WC
- * Fully furnished



Additional information

Facilities

Aircondition, Split system

Solar photovoltaic panels

Elevator

Solar water heater

Parking, Covered

Storage

Features

Alarm system

Bath

City view

Double glazing

En suite shower

Fitted wardrobes

Guestroom

Modern design

Near bus route

Shower

Utility room

Balcony, back

Bright

Combined kitchen and dining area

Easy access to main roads

Energy efficient doors/windows

Floor-to-ceiling windows

Kitchen appliances

Municipal water/sewage

Open plan

Shutters

Veranda

Balcony, front

Ceramic tiles

Courtyard

Elevated

Entrance gate, automated

Guest WC

Laminate flooring

Near amenities

Quiet area

Tile flooring

Distances

Amenities



400 m

Airport



65 km

Sea



2.5 km

Public transport



400 m

Schools



3 km

Resort




7 km

Contact us



Elena Sokil

 (+357) 95759512

 lenasokil0@gmail.com

