



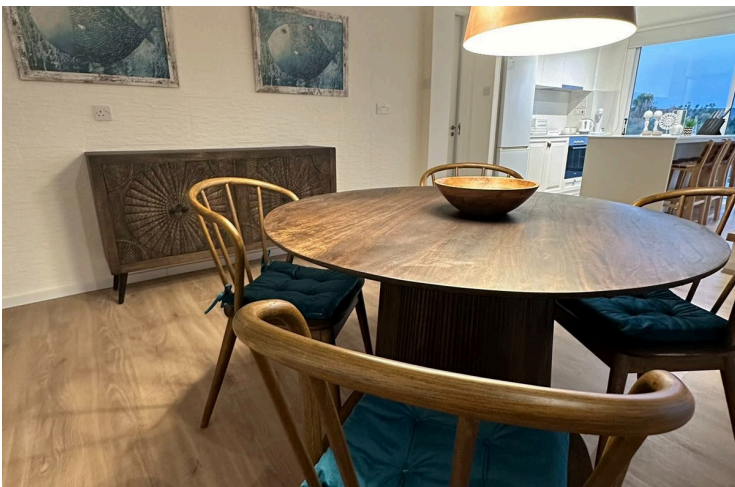
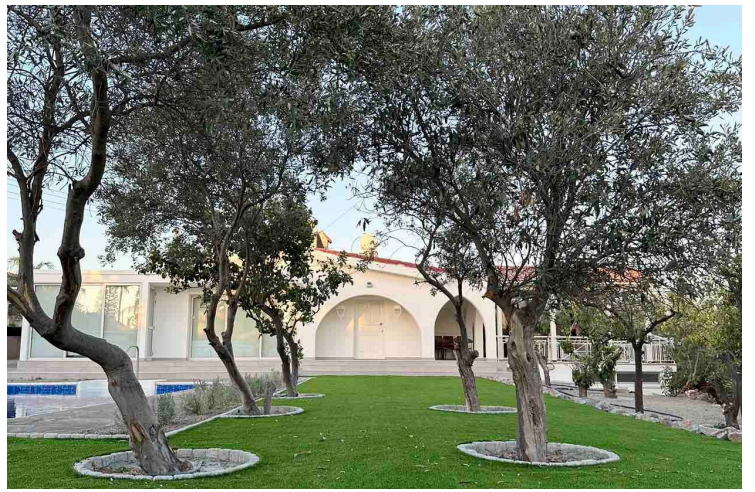
#18601

# Modern Detached Villa in Spacious Moni Area For Rent

📍 Moni, Limassol

€4,500 /month





# Overview

## Specifications

Bedrooms



4

Covered

185 m<sup>2</sup>

Type	<b>Detached Villa</b>
Showers	<b>4</b>
Toilets	<b>5</b>
Plot	<b>1260 m<sup>2</sup></b>
Covered veranda	<b>75 m<sup>2</sup></b>
Uncovered veranda	<b>30 m<sup>2</sup></b>

Basement	<b>70 m<sup>2</sup></b>
Status	<b>Key ready</b>
Year of construction	<b>1994</b>
Furnished	<b>Fully furnished</b>
Structure	<b>Concrete</b>
Energy efficiency rating	<b>B+</b>

## Description

? Beautifully Renovated 4-Bedroom Villa with Private Pool – Moni Limassol ??

? Only 10–15 minutes from Limassol | 5 minutes to the sea | 45 minutes to Larnaca & Paphos Airports

Located in a peaceful, private, and picturesque setting, this superb villa has been newly and respectfully renovated to offer luxury accommodation surrounded by nature ???. With a large private swimming pool, a stunning lawned garden, and breathtaking countryside and mountain views, this home is the perfect choice for a relaxing and unforgettable stay.

This stylish and spacious 4-bedroom private villa offers:

? 185 sq.m. covered area

? 105 sq.m. verandas (covered & uncovered)

? Built on a generous 1,260 sq.m. plot

Combining modern and traditional architecture, the villa blends beautifully with its natural surroundings and provides a cooler, more comfortable climate compared to humid coastal resorts ?? — ideal as a summer retreat!

? Key Features

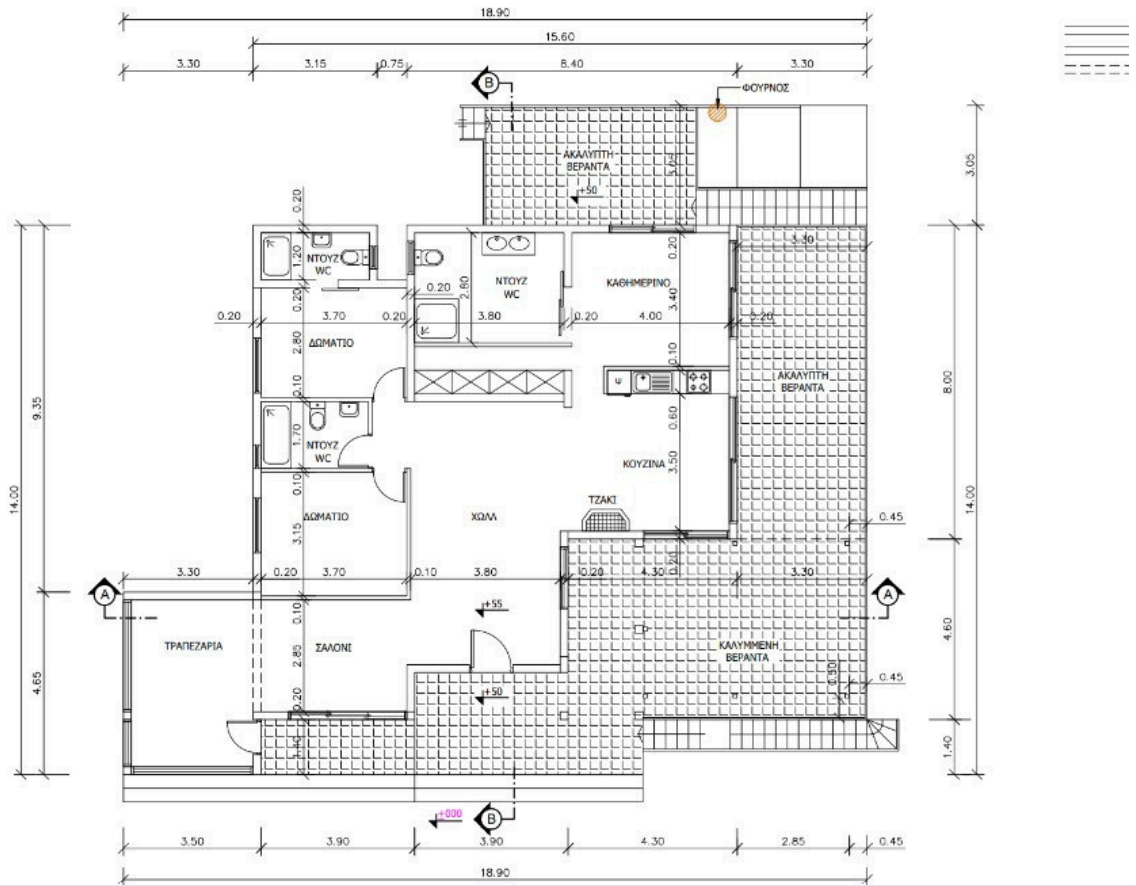
? 4 spacious bedrooms

? Large private swimming pool

? Fantastic lawned garden



# Floor plans



# Additional information

## Facilities

Aircondition, Split system

Outdoor shower

Solar photovoltaic panels

Landscaped garden

Parking, Covered

Storage

Maid's room

Pool, Private

## Features

Alarm system

Bright

Courtyard

Easy access to main roads

Fitted wardrobes

Ground floor bedroom

Guestroom

Irrigation system

Kitchenette

Modern design

Next to green area

Outdoor kitchen

Quiet area

Shower

Under stairs storage

Barbeque

CCTV

Double glazing

En suite shower

Floor-to-ceiling windows

Guest WC

Indoor fireplace

Kitchen appliances

Laundry room

Mountain view

Open plan

Parquet flooring

Roller blinds

Spacious rooms

Utility room

Bath

Ceramic tiles

Easy access to highway

Entrance gate, automated

Garden, large

Guest cloakroom

Internal stairs

Kitchen island

Luxury specifications

Municipal water/sewage

Openings in opposite sides

Pool view

Separate dining area

Tile flooring

Veranda, large

## Distances

Amenities

 3 km

Airport

 55 km

Sea

 4.5 km

Public transport

 4 km

Schools

 5 km

Resort

 7 km



## Contact us



**Elena Sokil**

☎ (+357) 95759512

✉ lenasokil0@gmail.com

