



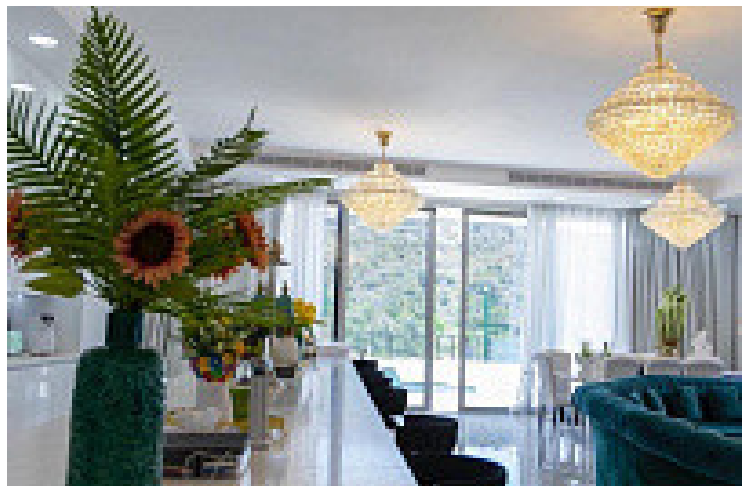
#18589

# Modern Parekklesia Villa for Sale with private Pool and Gym

📍 Parekklesia, Limassol

€10,500,000 +VAT





# Overview

## Specifications

Bedrooms



Bathrooms



Covered

1350 m<sup>2</sup>

Type	<b>Detached Villa</b>
Toilets	<b>7</b>
Plot	<b>6000 m<sup>2</sup></b>
Status	<b>Key ready</b>

Year of construction	<b>2025</b>
Title deed	<b>Yes</b>
Furnished	<b>Fully furnished</b>
Energy efficiency rating	<b>A</b>

## Description

High - End 7-Bedroom Two-Level Villa for SALE – Limassol I Parekkklisia

An exceptional modern residence offering absolute privacy, premium comfort, and outstanding lifestyle facilities in one of Limassol's most prestigious residential areas.

Situated on a huge private plot of approximately 6,000m<sup>2</sup> in the Agios Georgios area of Parekkklisia, this magnificent fully furnished two-level villa offers approximately 1,350m<sup>2</sup> of covered areas, combining elegant architecture with high-end finishes and resort-style outdoor living.

### ? Property Features

- \* Modern two-level luxury villa
- \* Approx. 1,350m<sup>2</sup> covered internal areas
- \* Approx. 6,000m<sup>2</sup> landscaped plot
- \* Built in 2025
- \* Energy Efficiency Rating A
- \* Fully furnished
- \* Photovoltaic system
- \* Alarm/security system
- \* Full air conditioning in all rooms
- \* Covered parking & large garage

### ? Accommodation



# Additional information

## Facilities

Aircondition, Central system

Heating, Central, independent

Outdoor shower

Pool, Private, salt water

Storage

Childrens playground

Landscaped garden

Parking, Garage, double

Solar photovoltaic panels

Gym

Maid's room

Pergola

Solar water heater



# Features

Alarm system	Balcony	Balcony, back
Balcony, front	Barbeque	Bath
Bathroom underfloor heating	Bright	CCTV
Central satellite system	Central sound system	Ceramic tiles
Courtyard	Cul de sac	Double glazing
Easy access to highway	Easy access to main roads	En suite bathroom
En suite shower	Energy efficient doors/windows	Entrance gate, automated
Entrance hall	Fire detector	Fireproof entrance doors
Fitted wardrobes	Floor-to-ceiling windows	Garden
Garden, large	Ground floor bedroom	Guest WC
Guestroom	High ceilings	Indoor fireplace
Internal stairs	Irrigation system	Jacuzzi
Kitchen appliances	Kitchen island	Kitchenette
Laminate flooring	Laundry room	Linen room
Luxury specifications	Modern design	Mountain view
Municipal water/sewage	Near amenities	Next to green area
Open plan	Openings in opposite sides	Outdoor kitchen
Panoramic view	Parquet flooring	Play room
Pool view	Quiet area	Roller blinds
Separate dining area	Shower	Shutters, electric
Sound insulation	Spacious rooms	Tile flooring
Under stairs storage	Utility room	Ventilation system
Veranda	Veranda, back	Veranda, front
Veranda, large	Walk-in closet	Wooden flooring



## Distances

Amenities

 2 km

Airport

 54 km

Sea

 4 km

Public transport

 4 km

Schools

 5 km


Resort

 5 km

## Contact us



**Elena Sokil**

 (+357) 95759512

 lenasokil0@gmail.com

