



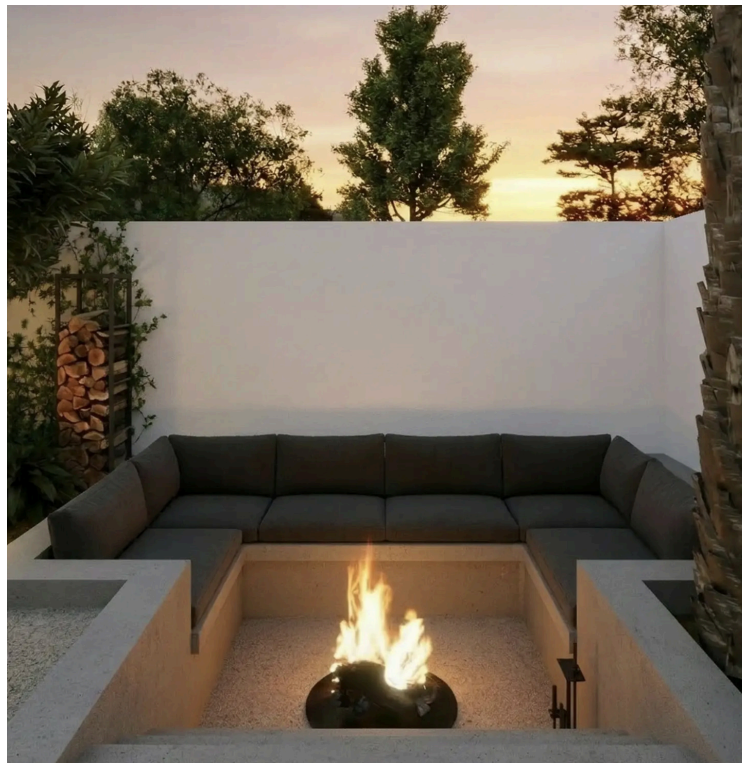
#18550

Luxury 5-Bedroom Detached House for Sale in Faneromeni, Larnaca (18550)

📍 Faneromeni, Larnaca

€1,499,000





Overview

Specifications

Bedrooms

 5


Bathrooms

 5

Covered

 330 m²

Type	Detached Villa
Showers	5
Toilets	5
Plot	484 m²
Status	Off plan

Year of construction	2026
Furnished	Unfurnished
Structure	Concrete
Facade	Concrete
Energy efficiency rating	 A

Description

Luxury 5-Bedroom Detached House for Sale in Faneromeni, Larnaca (18550)

An exceptional off-plan luxury residence located in one of the most exclusive and prestigious areas of Larnaca — Faneromeni — next to a green area and directly adjacent to the National Salt Lake Park.

Designed for those seeking elegance, privacy, and a premium lifestyle, this modern detached home combines contemporary architecture with beautiful park views and peaceful surroundings.

The property is currently under construction with estimated completion in 2026 and will offer approximately 333 m² of covered internal areas on a 484 m² private plot.

The residence features five spacious bedrooms and more than five bathrooms, thoughtfully designed to provide maximum comfort, functionality, and privacy for family living.

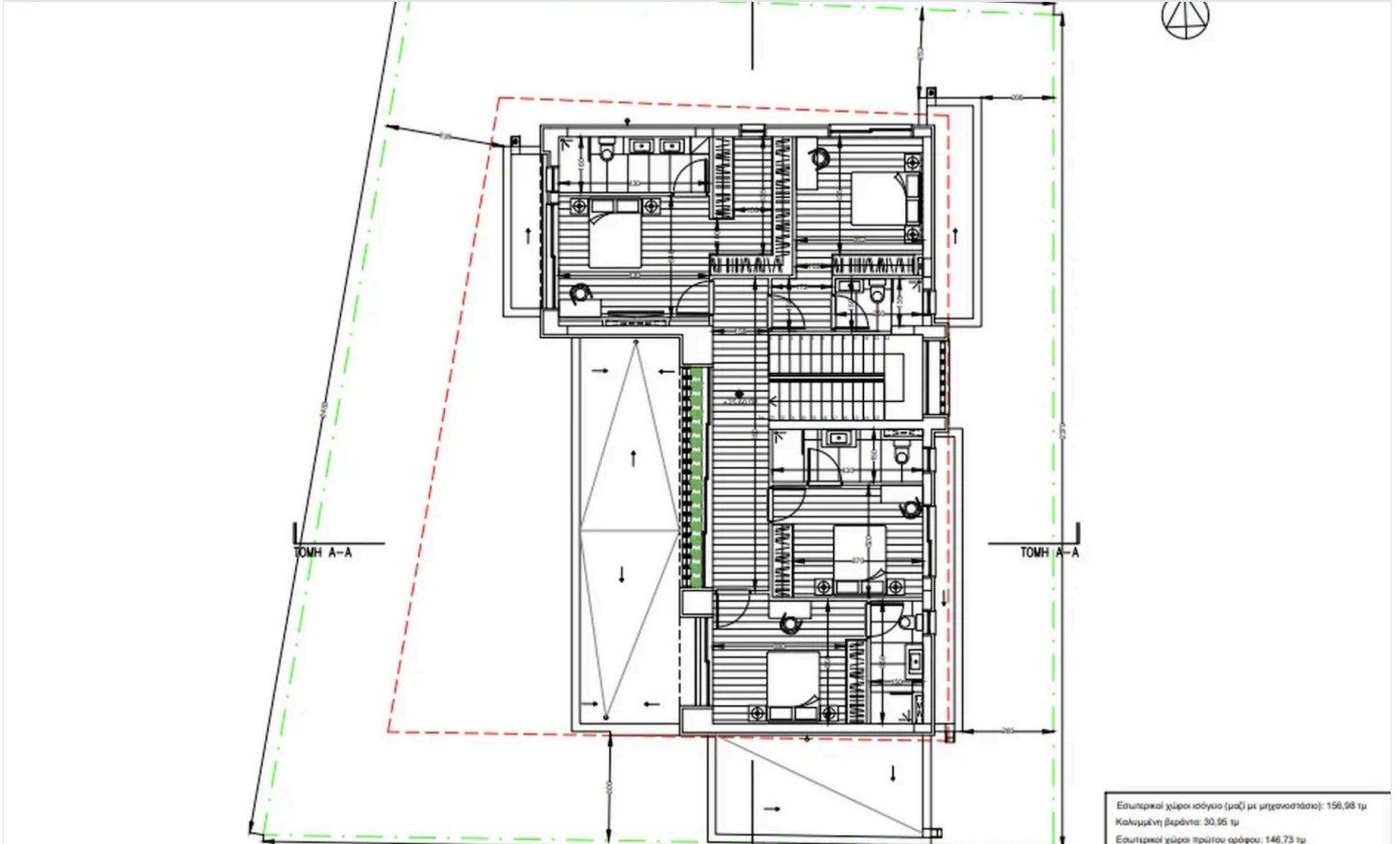
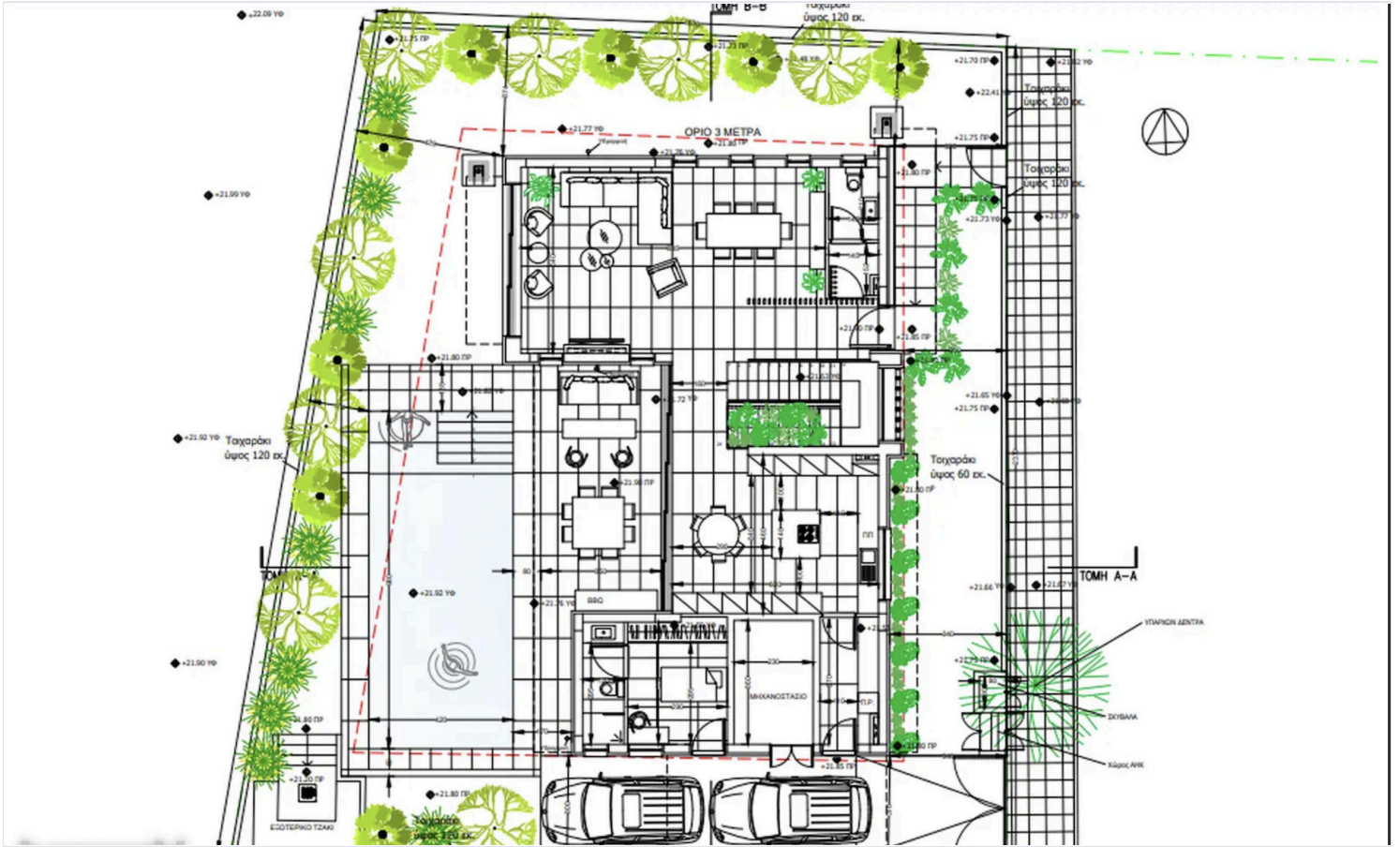
Large open-plan living and dining areas seamlessly connect with the outdoor spaces, creating an ideal environment for entertaining and everyday luxury living.

Outdoor areas include a beautifully designed private garden, swimming pool, spacious verandas, and a dedicated fire-pit lounge area, offering the perfect setting for relaxing evenings and social gatherings while enjoying the serenity of the surrounding green area and park.

The property also benefits from covered parking and Energy Efficiency Class A, combining luxury with modern



Floor plans



Επιπλωτική χώρα ισόγειο (μσ) με μηχανοστάσιο: 156,98 τμ
 Καλυμμένη βεράντα: 30,95 τμ
 Εξωτερικοί χώροι πρώτου ορόφου: 146,73 τμ



Additional information

Facilities

Aircondition, Split system

Heating, Split system

Parking, Covered

Pool, Private

Storage

Features

Double glazing

Easy access to highway

Easy access to main roads

En suite shower

Garden, large

Guest WC

Guestroom

Indoor fireplace

Kitchen island

Luxury specifications

Marble stairs

Modern design

Near amenities

Near bus route

Next to green area

Panoramic view

Quiet area

Distances

Amenities

 100 m

Airport

 10 km

Sea

 1.5 km

Public transport

 100 m

Schools

 300 m


Resort

 500 m

Contact us



Giorgos Tsiampos

 (+357) 99982112

 infoextrusrealestate@gmail.com

