



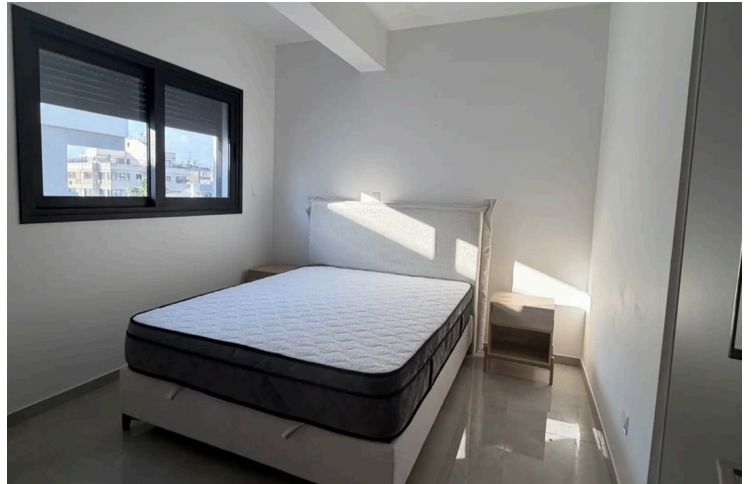
#18546

Modern Sea View Penthouse in Petrou Kai Pavlou

 Petrou Kai Pavlou, Limassol

€2,350 /month





Overview

Specifications

Bedrooms



2

Covered

100 m²

Type	Apartment
Showers	1
Toilets	1
Status	Key ready

Year of construction	2026
Furnished	Fully furnished
Energy efficiency rating	A

Description

Modern 2-Bedroom Penthouse for Rent

Brand new 2-bedroom penthouse available for rent in a sought-after area of Limassol, just steps away from ERA Shopping Centre and minutes from the city centre.

This modern apartment offers 100 m² of internal space and features a spacious private roof garden, bright open-plan living area, fully equipped modern kitchen, and high-quality finishes throughout.

Property Features

- * 2 Bedrooms
- * 1 Bathroom
- * Fully furnished
- * Spacious private roof garden
- * Balcony
- * Storage room
- * Covered parking
- * Elevator
- * Full air conditioning in all rooms
- * Energy Efficiency Rating A
- * Pets allowed

Conveniently located close to shops, cafes, supermarkets, and main roads, making it ideal for professionals or



Additional information

Facilities

Aircondition, Split system

Elevator

Gated complex

Parking, Covered

Solar water heater

Storage

Features

Alarm system

Balcony

Ceramic tiles

City view

Double glazing

Easy access to main roads

Elevated

Entrance gate, automated

Fitted wardrobes

Floor-to-ceiling windows

Garden

Heart of city center

Internal stairs

Kitchen appliances

Kitchen island

Modern design

Municipal water/sewage

Near amenities

Near bus route

Open plan

Outdoor kitchen

Panoramic view

Pets allowed

Quiet area

Roller blinds

Roof garden

Sea view

Separate dining area

Shower

Shutters, electric

Spacious rooms

Tile flooring

Utility room

Ventilation system

Veranda, large

Distances

Amenities



200 m

Airport



64 km

Sea



2 km

Public transport



200 m

Schools



2 km

Resort




4 km

Contact us



Elena Sokil

 (+357) 95759512

 lenasokil0@gmail.com

