



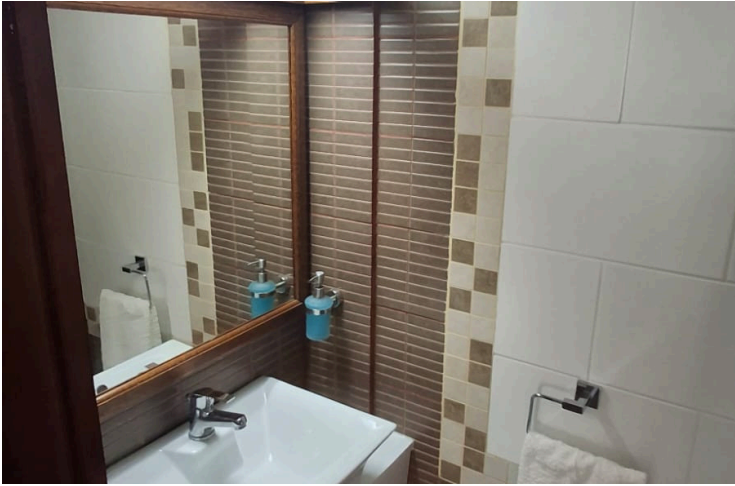
#18418

MODERN 4 BEDROOM VILLA FOR RENT IN PYLA, LARNACA (18418)

 Pyla, Larnaca

€2,500 /month





Overview

Specifications

Bedrooms



4

Bathrooms



2

Covered



130 m²

Type	Detached Villa
Toilets	3
Plot	342 m²
Covered veranda	12 m²
Status	Used

Furnished	Fully furnished
Structure	Concrete
Facade	Concrete
Energy efficiency rating	B+

Description

Discover comfortable living in this detached villa available for rent in the peaceful area of Pyla. With a generous internal space of 130 m², this used but well-maintained home offers four spacious bedrooms and two bathrooms, making it ideal for families or professionals seeking extra room.

Inside, the villa is fully furnished, allowing you to move in with ease. The open-plan living and dining area is welcoming, while the modern kitchen is equipped with all the essentials. Large windows provide plenty of natural light and offer beautiful mountain views, adding to the villa's charm.

Step outside to enjoy your very own private swimming pool, perfect for relaxing or entertaining guests. The villa is conveniently close to major highways, making commuting straightforward. Amenities such as shops, cafes, and schools are just a short drive away, making daily errands simple.

Pyla is a serene neighborhood known for its blend of local culture and modern conveniences. Residents enjoy a quiet atmosphere and easy access to both the coastline and green, hilly landscapes. This property is proudly advertised by Lextrus Real Estate. Contact us today to schedule a viewing.



Additional information

Facilities

Aircondition, Split system

Parking, Garage

Solar water heater

Heating, Split system

Pergola

Storage

Landscaped garden

Pool, Private

Features

Alarm system

Balcony, front

Double glazing

En suite bathroom

Guest WC

Kitchen appliances

Mountain view

Pool view

Sound insulation

Balcony

Bath

Easy access to highway

Entrance gate

Guestroom

Modern design

Near amenities

Pressurized water system

Spacious rooms

Balcony, back

Bright

Easy access to main roads

Garden

Internal stairs

Mosaic tiles

Open plan


Quiet area

Thermal insulation

Contact us



George Sergiou

 (+357) 94055813

 info@lextrusrealestate.com

