



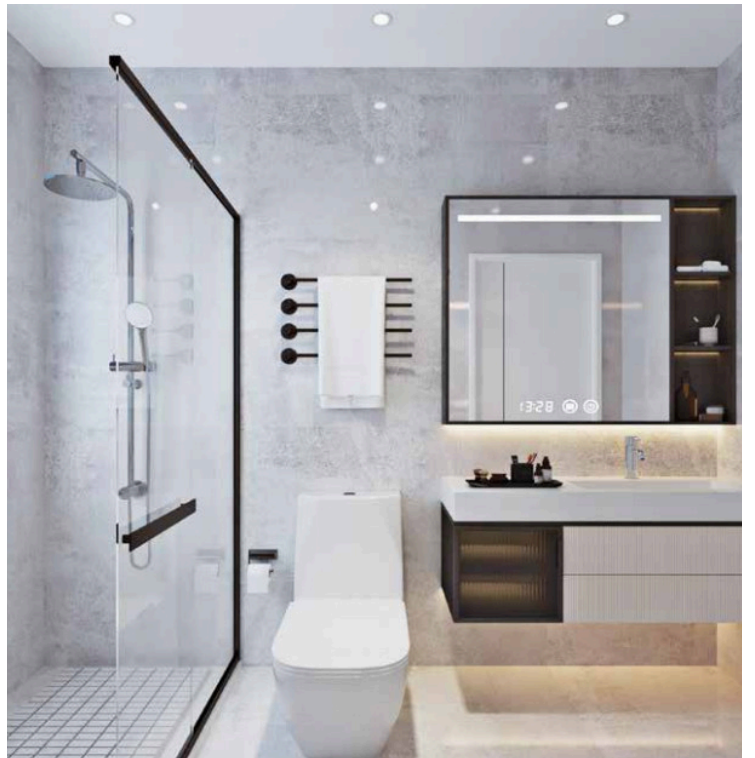
#18415

# Luxury 2+ Bedroom Penthouse with Expansive Terrace in Germasogeia, Limassol (18415)

📍 Germasogeia, Limassol

€680,000 +VAT





# Overview

## Specifications

Bedrooms

 2


Bathrooms

 2

Covered

 113 m<sup>2</sup>

Type	<b>Apartment</b>
Toilets	<b>2</b>
Covered veranda	<b>29 m<sup>2</sup></b>
Roof garden	<b>60 m<sup>2</sup></b>

Status	<b>Off plan</b>
Structure	<b>Concrete</b>
Facade	<b>Concrete</b>
Energy efficiency rating	 <b>A</b>

## Description

FOR SALE

Luxury 2+ Bedroom Penthouse with Expansive Terrace in Germasogeia, Limassol

Modern Smart Living | Spacious Outdoor Areas | Premium Residential Development

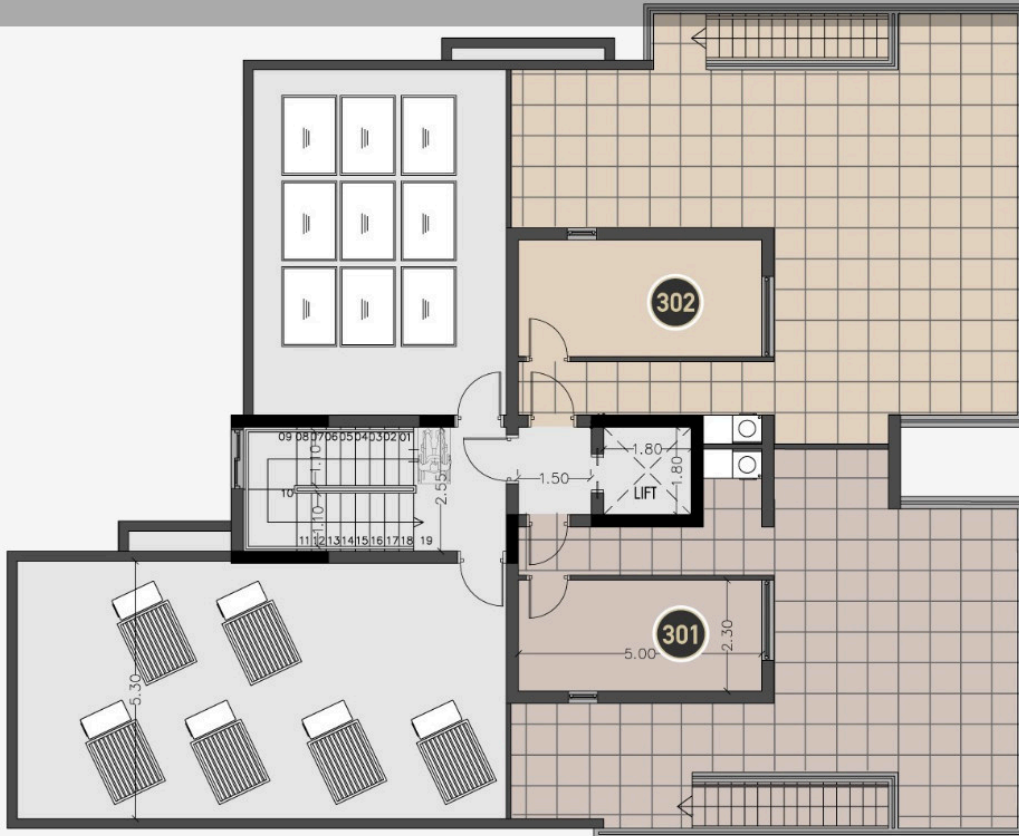
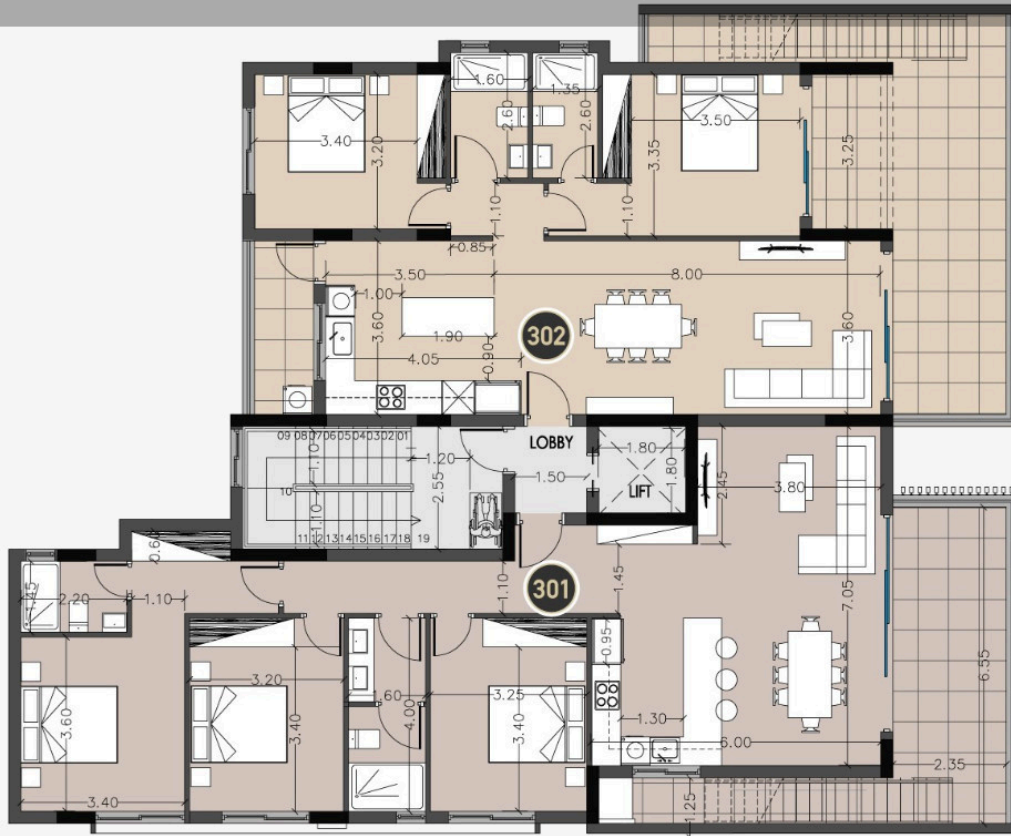
- Price: €680,000 +VAT
- Status: Off Plan
- Delivery: 11/2027

### PROPERTY OVERVIEW

- Floor: 3rd Floor + terrace level - Penthouse
- Bedrooms: 2+ Bedrooms
- Bathrooms: 2 (including 1 en-suite)
- Internal Covered Area: 113 m<sup>2</sup>
- Covered Veranda: 29 m<sup>2</sup>
- Uncovered Terrace Veranda: 60 m<sup>2</sup>
- Additional Room on Terrace: 25 m<sup>2</sup>
- Parking: Covered Parking
- Storage Room: Private Storage Included
- Energy Efficiency Certificate: A



# Floor plans



# Additional information

## Facilities

Aircondition, Provision

Parking, Covered

Elevator

Solar water heater

Heating, Underfloor

Storage

## Features

Balcony

Connected to electric mains

Easy access to highway

Entrance hall

Investment opportunity

Modern design

Pipe-in-pipe plumbing system

Spacious rooms

Veranda, large

Bright

Door screen

Easy access to main roads

Granite countertops

Lobby

Near amenities

Rental potential

Thermal insulation

CCTV

Double glazing

En suite bathroom

High ceilings

Luxury specifications

Open plan

Smart home automation

Veranda

## Distances

Amenities

 600 m

Sea

 1 km


Schools

 800 m

## Contact us



**Christos Ioannides**

 (+357) 95146944

 valantodc@gmail.com

